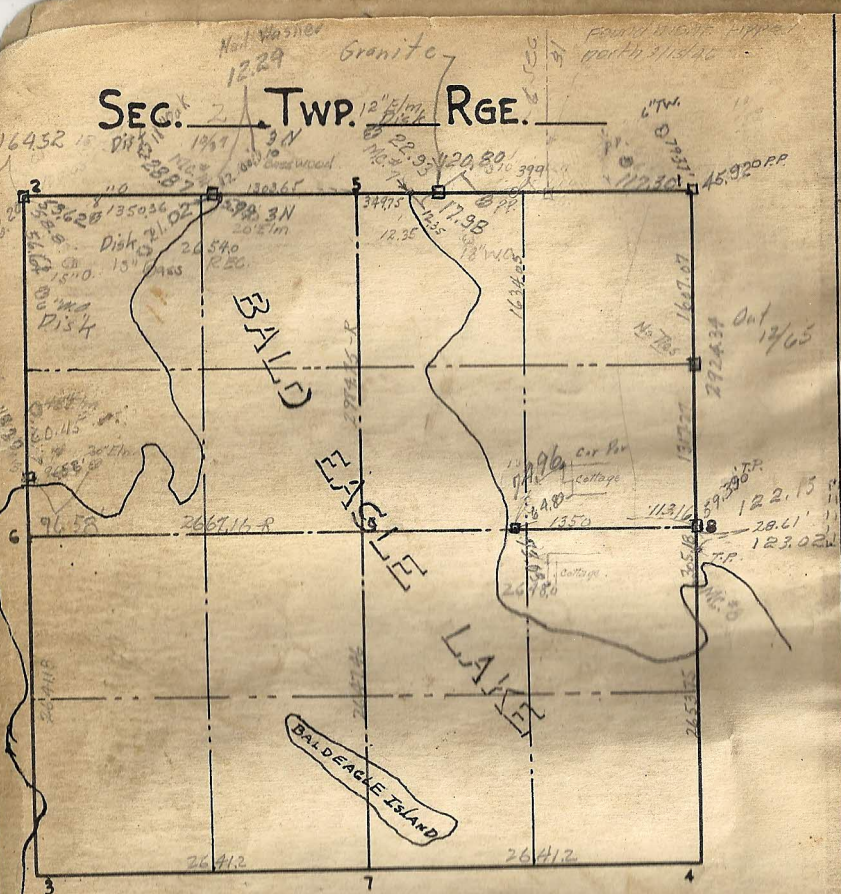


SEC. 2 TWP. 12 RGE.



Cor.	Remarks
E 1/4 of NE 1/4 of 1/30k	
No #13 OK	
No #14 OK Granite 4/65	
M.C. #7 placed iron 2-17-40 using ties	
See Spc in Back of Book	

- Granite 4/65 Two Gov trees found By Fitz Jan-1901 Set Mont 1901
- N 1/2 RR Spike over Granite 2 Found one Gov witness Stump  
Fixed Jan. 1902 Set mont Dec. 1902
- 3 In Lake
- 4 In Lake
- 5 In Lake
- 6 In Lake
- 7 In Lake
- 1/2 S. E. 1/4 8 Est. by Fitz Jan. 1901 2 Gov stumps Set  
mont. Nov. 1901
- C In Lake
- M.C. #7 one good tree found by Fitz Set Mont 1901  
Mont moved East 12.25 in 1910
- M.C. #14 Straight line from M.C. #7 to N.W. cor.  
sec. 2 Gov. dist. from N.W. cor. Set. mont. Dec. 1902
- M.C. #13 Found one Gov. W.T. Set mont Dec. 1902
- M.C. #8 Straight line from 1/4 cor to Sec. cor  
1-2-12-13 Pro. fixed Jan. 1902