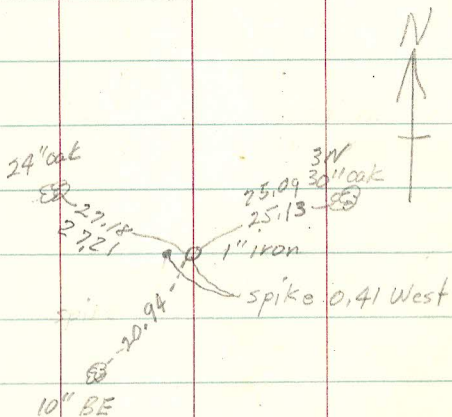


NW Cor Sec 12-28-22

3/23/61

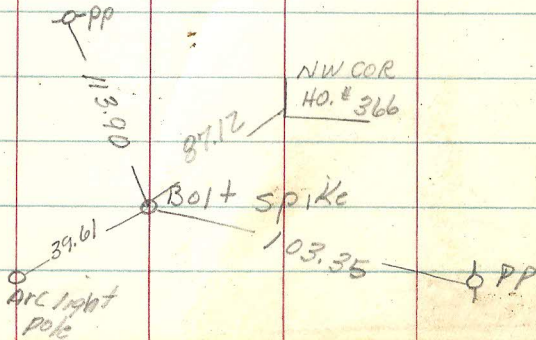
R76



W 1/4 1/4 Cor

NW 1/4 Sec 12-28-22

2389



26 + 41.45

22 + 96.04

345.41

13 + 20.72 1/4 1/4

PP

109.40

Beat Spike

103.33

37.02

10" 0

PP

E 1/4 1/4 Cor  
NE 1/4 SEC 12