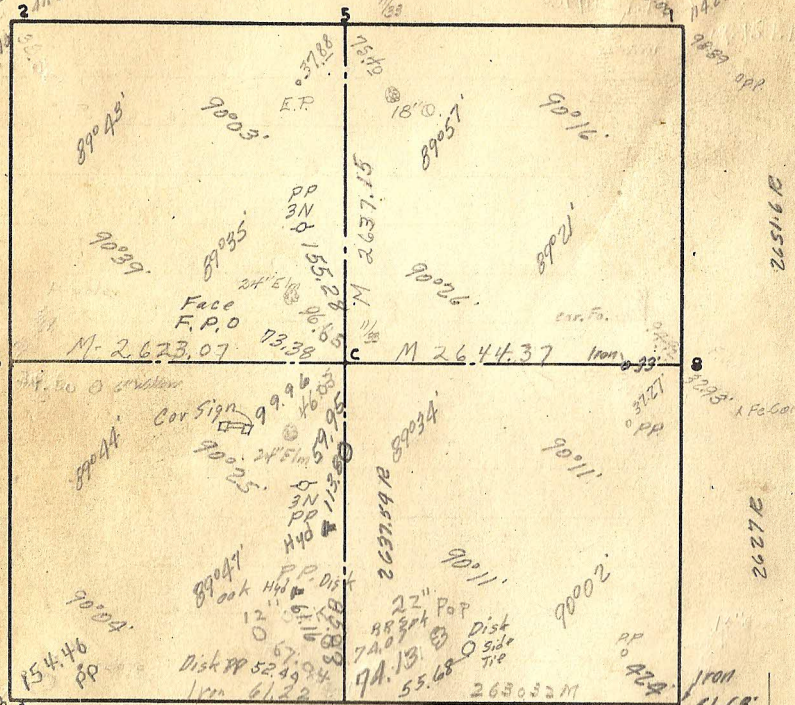


SEC. 9 TWP. 29 RGE. 23



Cor: Remarks

- 3 Retied 5/9-63
- 
- 
- 
- 
- 
- 
- 

1930  
21  
73.30

25  
1038  
3.

Granite

Granite

- 1 Fixed Jan-1897 Prorated
- 2 Found Old Gov W.T. standing fixed cor and Set Mont Aug 1896
- 3 Found old stake at Sec. cor. tied it and Set mont. Aug 1899
- 4 Fixed from line of old fences 1-1897 Set mont. May 1897
- 5 Ran straight line from corner cor place 1/4 Cor halfway Set mont. May 1897
- 6 Est. from line of old fences running W. Gov. W.T. cor. Set mont. May 1897
- 7 Found iron stake fixed by J.H.A. Set mont. 1897
- 8 Fixed from line of fences Jan 1897 Set mont. May 1897
- 9 By intersection Set mont. May 1897

Brass Plug 6/69 10.25 N of Monument

Granite Center

155.28

E.S. Board