

66-33- Snelling Ave - Gov. Sur.

79.75

1315.24
1315.16

2861.43 / 2851.50
0.9984

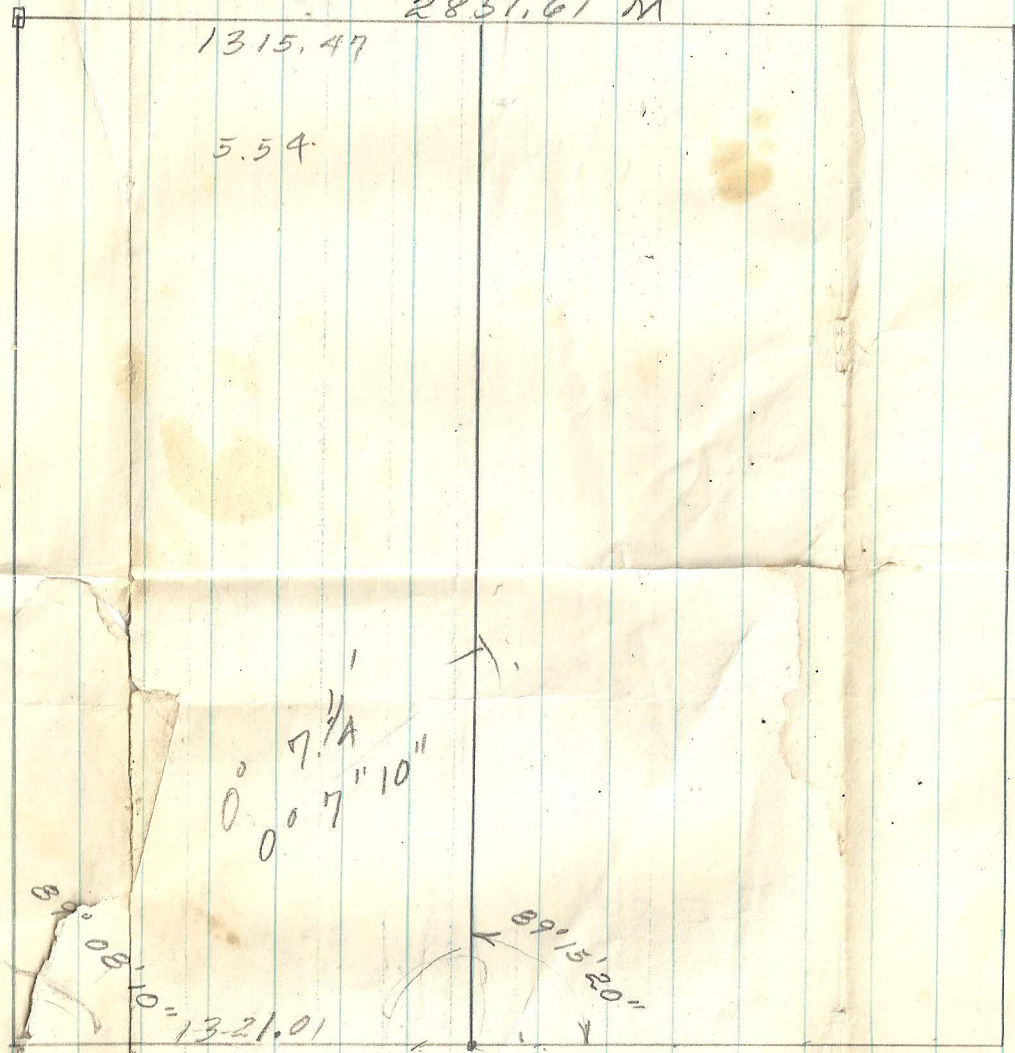
Can. Sec. 3-29-25

2861.43 Gov. Sur. (mean Horn. & 5ndll)

2851.61 M

300
449.5
2102.0

2851.61



0° 7' 10"
0° 7' 10"

89° 08' 10" = 1321.01

89° 15' 20"

2856.48 = Gov. Sur.

2858.66 = F.K. 12/11/58

~~10009 X 137 = 2856.49~~
~~2859.25~~

1321.19

X 1320 =

2856

