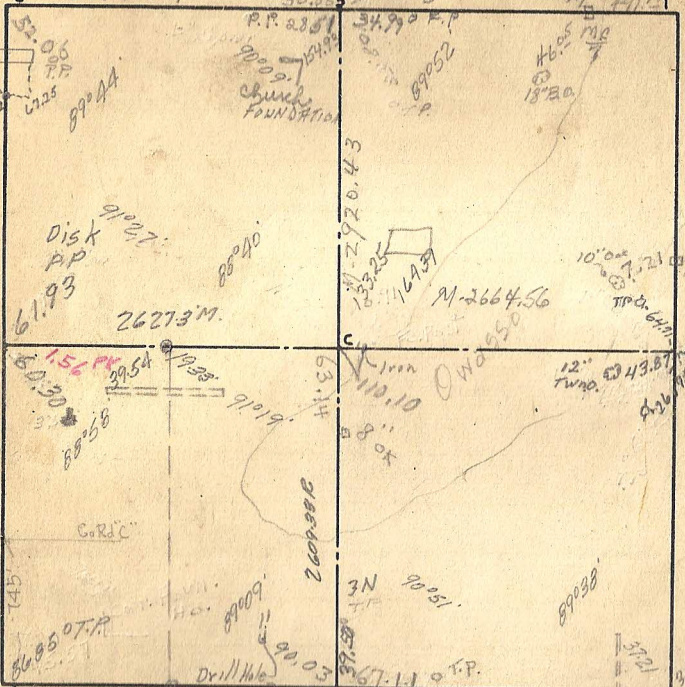


SEC. 2 TWP. 29 RGE. 23



Cor: 2639.76 Meas. 1320.25  
 Remarks: Pinned mark on end of culver. 7/95

- 5 Phased Blk. Mont. 11/37 ties Fern Viet. St Regradation

- 1 Fixed Jan. 1898 in Lake Owassa
- 2 Found old Oak hub also part of Cor. W.T. Set Mont. May 1896
- 3 Found Old iron stake no wit tree. Set Mont. May 1896
- 4 Set by Gates Johnson Ed. Subiner Tom Gould Local evidence (See big book) Mont. Set May 1895
- 5 Fixed by Armstrong Dec. 1896 Set Mont. Aug. 9-1897
- 6 Fixed by J.H. Armstrong Dec. 1896 Set Mont. May 1897  
 Iron over Granite
- 7 Ran straight line from cor. to cor taking 1/2 dist. in Marsh Set Mont. Nov 1897  
 Cast Iron 3-66
- 8 Armstrong measured N. from E. Bl. cor. Sec. 11 to lake pro. & Set Mont. Nov 1897
- C Fixed by Armstrong Dec. 1896 Set Mont. Nov 1897
- M.C. #6 Fixed by Armstrong Set - mont Aug. 1897
- M.C. #7 Fixed by Armstrong Set mont. Aug. 1897