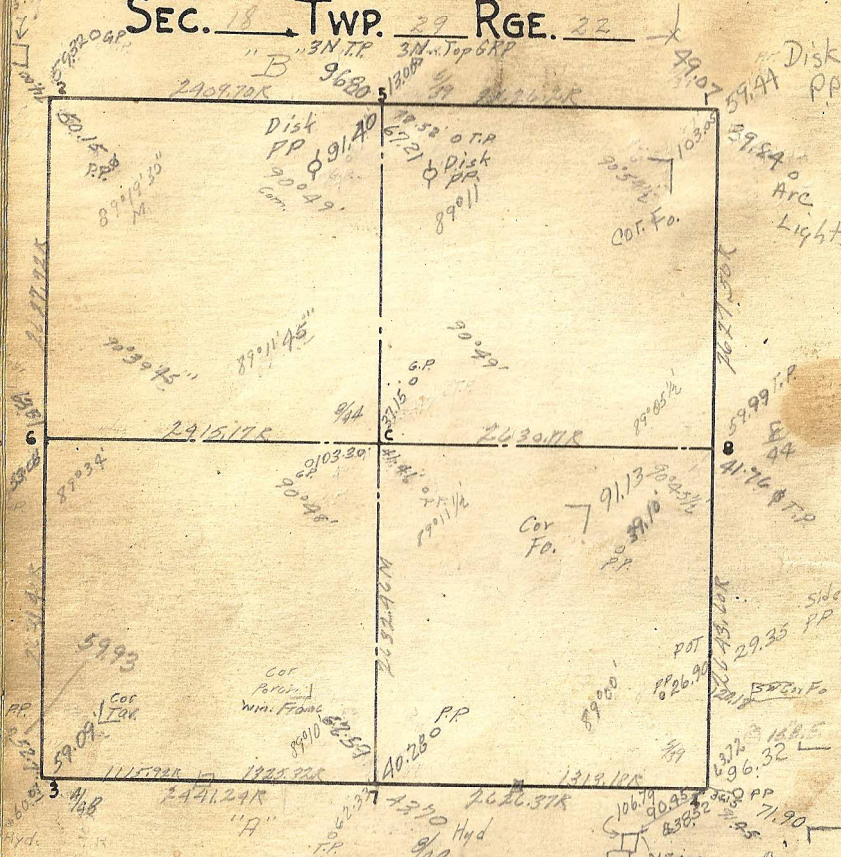


SEC. 18 TWP. 29 RGE. 22

Disk Post.



Cor. Remarks

C (= out '33) Replaced 11-15-33 iron fronties

1 Retied 3-13-61

2 ✓ 9-12-50

3

4

Granite

5 $\frac{7}{169}$

6

7

8 raised 5-39-K.H.

C RAISED - 8-18-50 A.M.