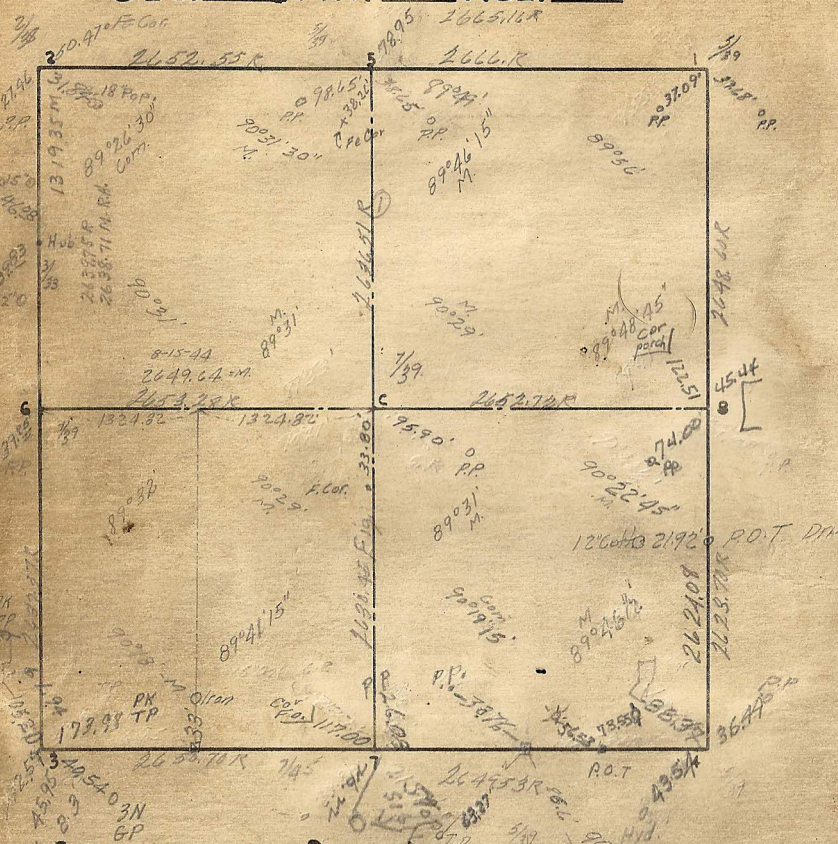


SEC. 15 TWP. 9 RGE.

9500 S.F.

Sec 15



Cor. Remarks

5 Raised - 12-1-33

6

Cor. Wall

45.47

33.60

RR

- 1 _____
- 2 _____
- 3 Granite $\frac{2}{67}$
- 4 Cast Iron New Ties $\frac{6}{9/55}$ 45.24
- 5 _____
- 6 _____
- 7 Bolt Spike on top mon. $\frac{5}{61}$ J.L.L. 2103
- 8 Retred $\frac{12}{8/62}$ KP 242
- C _____
- _____
- _____
- _____
- _____
- _____
- _____