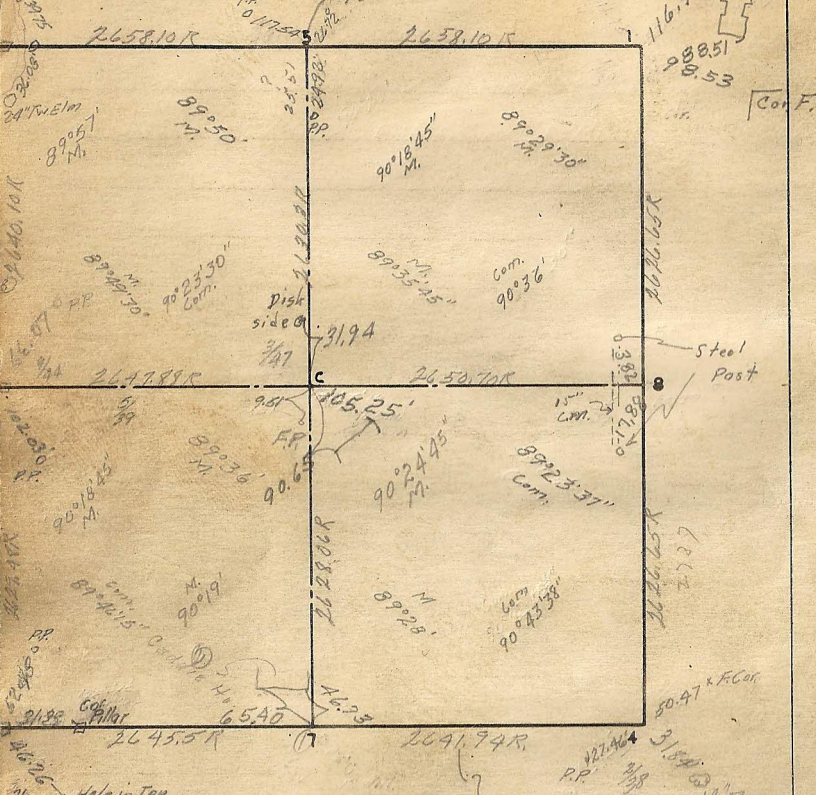


SEC. 9 TWP. RGE.



Remarks

24" Golt Disk  
 5 Iron  
 Disk PP  
 3N PP

- Granite 1 5/67
- 2
- C.I. 3
- 4 Railroad 13' 74.8
- 4/67 Tipped 5 1 1/4 Iron Rod. Elev. 85900
- Granite 6 6/65
- 7 New 6/ Ties 136
- Granite 8 Transit ties 5-1-67

