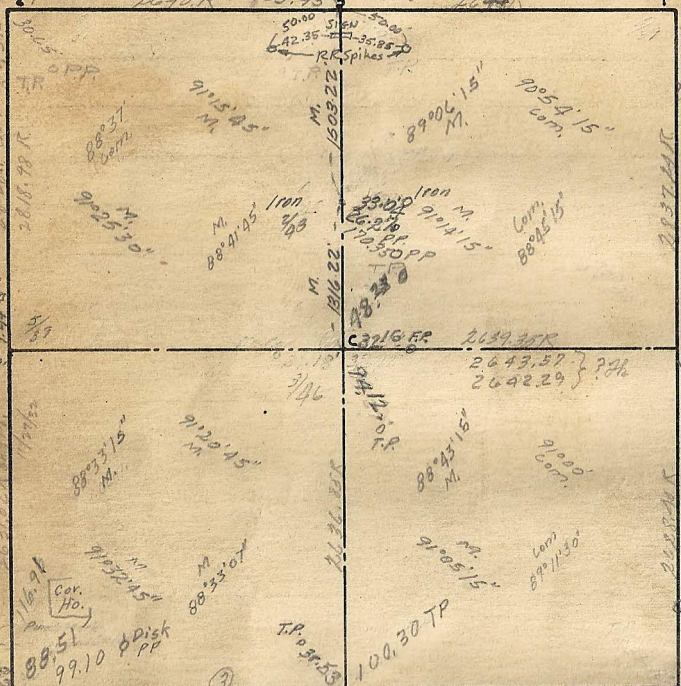


Nail & Was her 6469  
31.24

SEC. 3 TWP. RGE.



Cor:

Remarks

321

Granite

C.I. Mon

- 1 \_\_\_\_\_
- 2 \_\_\_\_\_
- 3 New Ties 3/1/57 4/65 (Boat spike in Mont) 5/67
- 4 Found Mont 1-5-10 K.F.
- 5 New Ties 12/31/53 F.K. 4/65 New Ties R.F.
- 6 \_\_\_\_\_
- 7 Tipped - Use spike  
MAN Hole 5/61 4/65
- 8 Placed Checking Angles at base of Bent Pipe  
8-18-67
- C \_\_\_\_\_