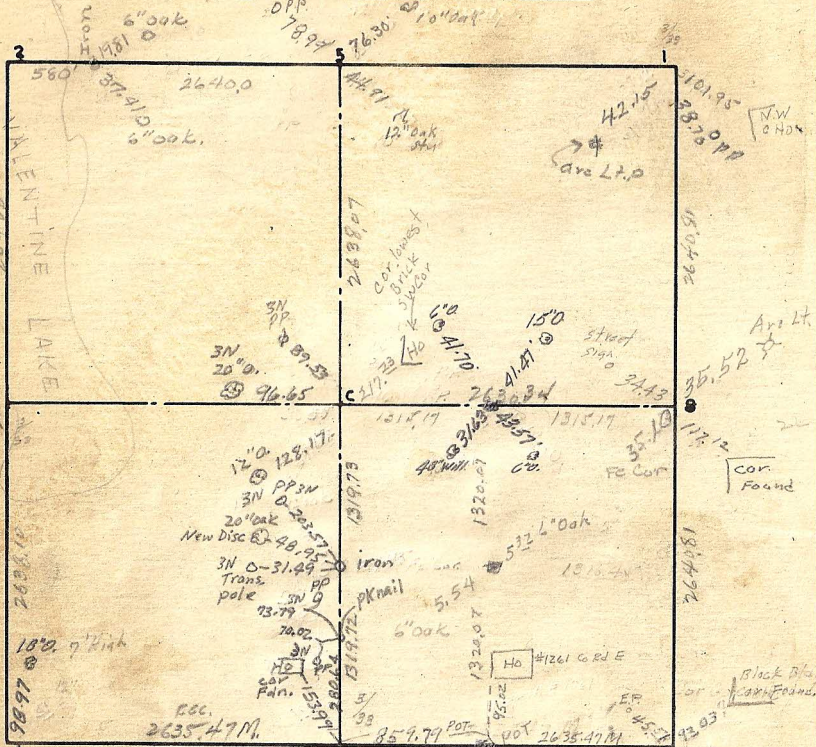


SEC. 27 TWP. RGE.



Cor:

Remarks

	2635.41 M 1932
	2029 M
	2210
	S.S.

So. 1/4 1/4 cor retied 3/6/62 R76

1 OK 1/43

2 In Lake

3 OK 12/43 1/41

4 OK 1/43 OK 5/70

5 OK 12/43 1/4

6 OK 12/43

7 OK 12/43 1/96 1/61 R76

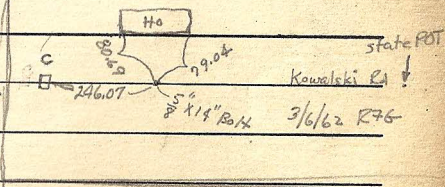
8 OK 12/43 1/41

C OK 12/43 1/46 5/5A Retied 1/61 R76

N 1/4 S.E. 1/4 1/41

W 1/4 " OK 12/43

Con S.E. 1/4



Kowalski Rd

3/6/62 R76