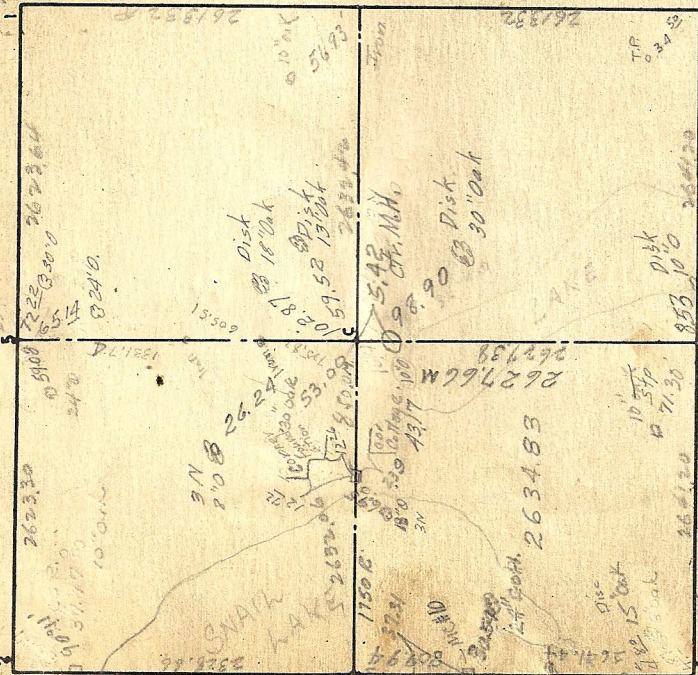


SEC. 24 TWP. 30 RGE. 23



Remarks

Cor:

SE. TP 9000, RR-S.W. 6975, 400' E. of S.W. 500' 242

1 OK 12/63

2 OK 12/63

3 OK 12/63 Retired 2/63 Mont. appears to be tipped to the West from at SW Corner Mont. for Dip Needle use.

4 OK 12/63

5 OK 12/63

6 In L.V. 3/66

7 OK 12/63 New 3/64 Reset 1/65 1/65 1/65

8 OK 12/63

C OK 3/66-1/65 4/66

MS OK

MC retired 5/61

MC #10 Retired 2/63 (Inn page 2)

Granite