

# CERTIFICATE OF LOCATION OF GOVERNMENT CORNER

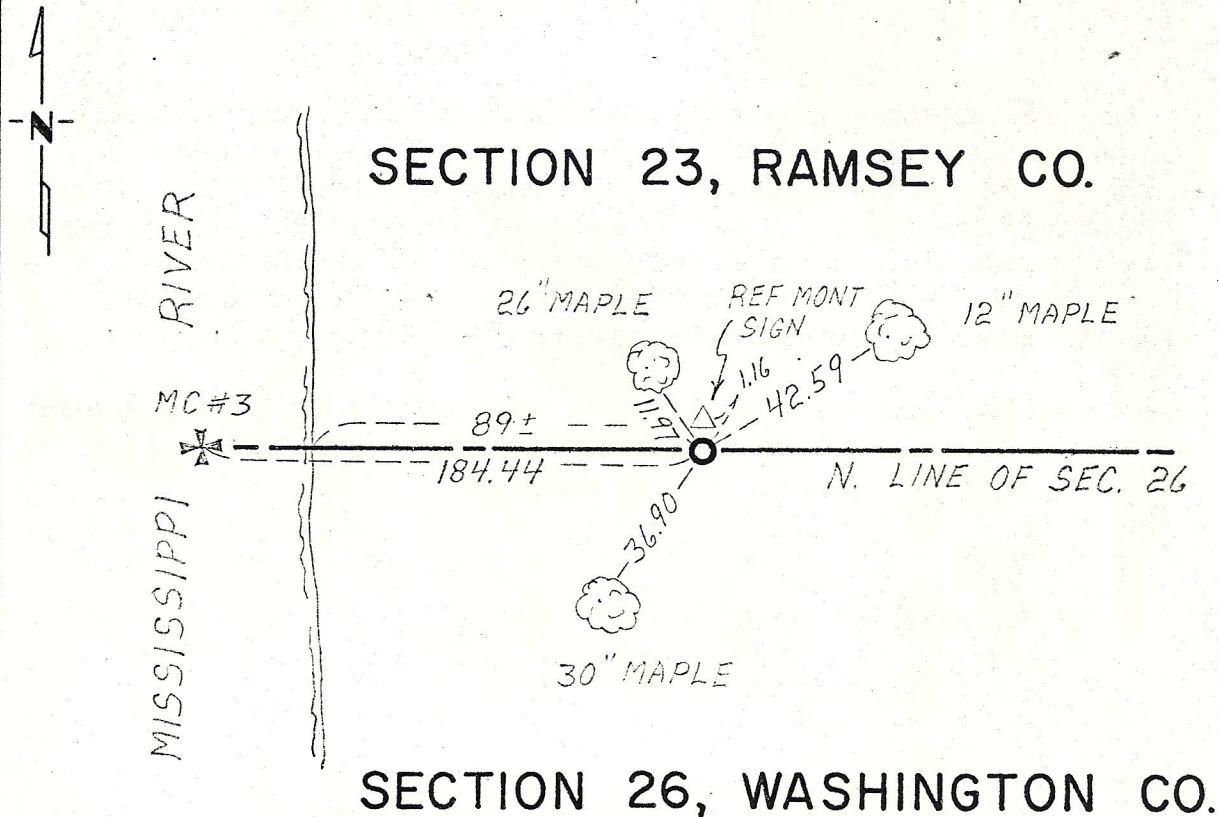
witness to Meander corner <sup>No. 3</sup> ~~corner~~ of Section 26, Township 28, Range 22, 4th P.M.  
 STATE OF MINNESOTA, County of Washington

**RECEIVED**  
 JUN 21 1984

At the corner location shown on the sketch:

- On 9-13-1979 found a 1/2" iron pipe in position east of MC.#3. COUNTY OF RAMSEY  
SURVEYORS OFFICE  
DATE
- left monument as found,  lowered monument,  removed monument (explain)
- On 9-13-1979 placed a Washington County cast iron monument in place of  
DATE  
 above 1/2" iron pipe.

### SKETCH OF REFERENCE TIES



*FACE TIES ARE NAIL AND DISC STAMPED WASH. CO. SURVEYOR*

Statement of evidence relative to this corner location is on back of page.

I hereby certify that this document and the data contained herein was prepared by me or under my direct supervision.

Paul A. Johnson 12-18-79  
SIGNATURE DATE

Registration No. 10938

- Land Surveyor,  Professional Engineer
- County Surveyor,  County Engineer

OFFICE OF THE REGISTER OF DEEDS  
 County of \_\_\_\_\_

I hereby certify that this document was filed in the Reg. of Deeds office at \_\_\_\_\_ .M. on the \_\_\_\_\_ day of \_\_\_\_\_ A.D., 19 \_\_\_\_\_

Register of Deeds \_\_\_\_\_

By \_\_\_\_\_, Deputy

DOCUMENT NO. \_\_\_\_\_

Statement of Evidence:

Witness to Meander Corner No. 3 common to Sections 23 & 26, T28 R22.

1847 Original government surveyors intersected left bank of Mississippi river and set a post at meander corner. Recorded two bearing trees:

Willow 14 inches in diameter bears S 15° 00' W 53 links

Willow 16 inches in diameter bears N 49° 00' W 40 links

1948 July - September, F.J. Armstrong, Civil Engineer, surveyed part of Sec. 26 T28 R22. His plat of survey map shows symbol ■ at Meander Corner #3.

1979 August and September, Dakota County Surveyor Bernard Larson traversed Sections 23 and 26, T28 R22 in conjunction with several sections in South St. Paul of Dakota County. The position established for the witness to Meander Corner #3 was based upon resurvey measurements along the North line of Section 26, old survey notes and records and consultation with P.A. Johnson, Washington County Surveyor. Dakota County survey crew set a ½" iron pipe at the computed position of the Witness to M.C. #3.

1979 September 13, Washington County survey crew replaced the ½" iron pipe set by Dakota County with a Washington County cast iron monument.