

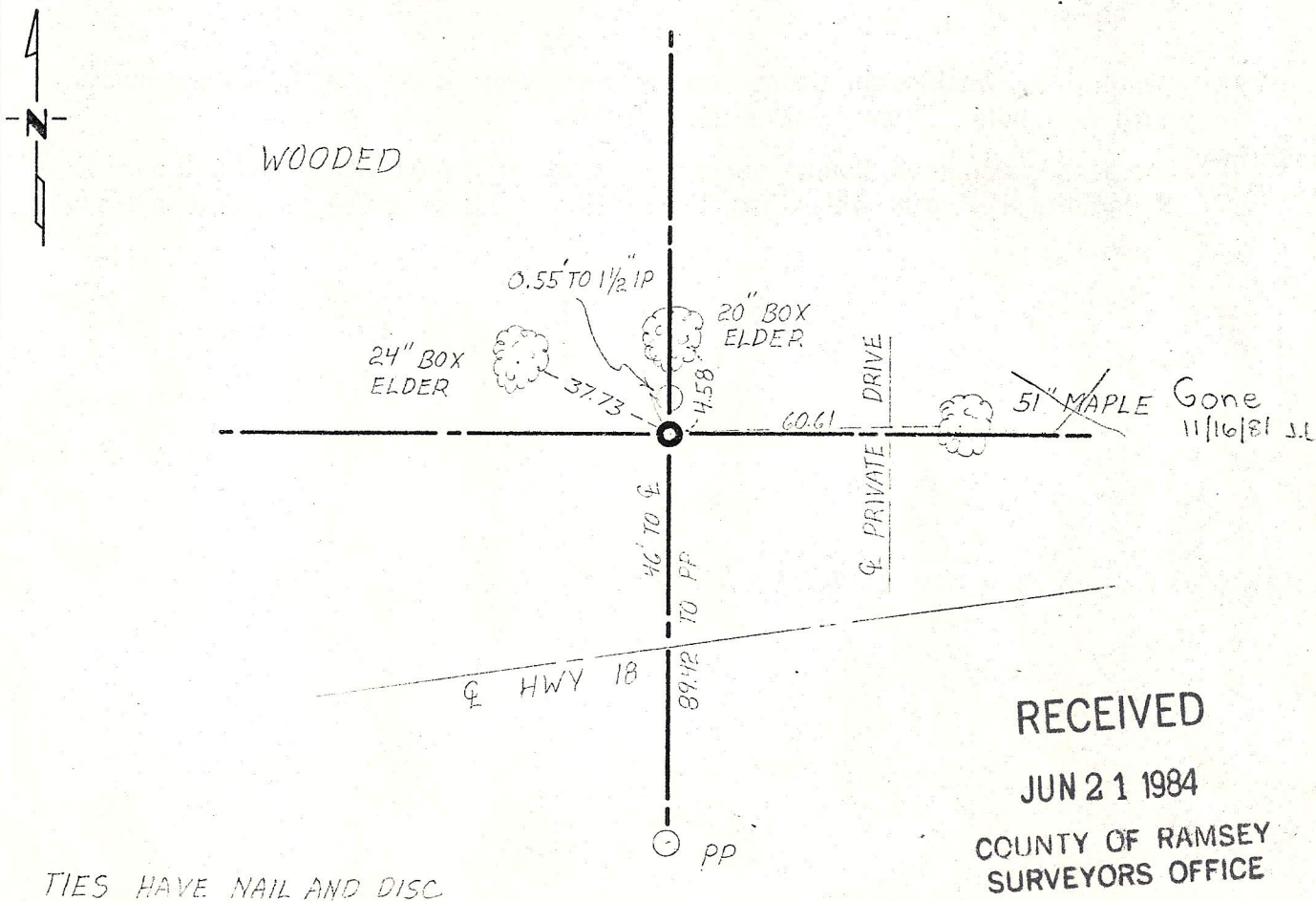
CERTIFICATE OF LOCATION OF GOVERNMENT CORNER

SW Corner of Section 19, Township 28, Range 21, 4th P.M.
STATE OF MINNESOTA, County of Washington

At the corner location shown on the sketch:

- On 1-06-75 found a 8" x 8" granite monument with drill hole, Monument down 0.50'
DATE
- left monument as found, lowered monument, removed monument. (explain)
- On Oct. 1976 placed a Washington County cast iron monument over stone.
DATE

SKETCH OF REFERENCE TIES



RECEIVED
JUN 21 1984
COUNTY OF RAMSEY
SURVEYORS OFFICE

TIES HAVE NAIL AND DISC.

Statement of evidence relative to this corner location is on back of page.

I hereby certify that this document and the data contained herein was prepared by me or under my direct supervision.

Saul A. Johnson 6/24/76
SIGNATURE DATE

Registration No. 10938

- Land Surveyor, Professional Engineer
- County Surveyor, County Engineer

OFFICE OF THE REGISTER OF DEEDS

County of _____

I hereby certify that this document was filed in the Reg. of Deeds office at _____ .M. on the _____ day of _____ A.D., 19 _____

Register of Deeds _____

By _____, Deputy

DOCUMENT NO. _____

1981 JUN 21 1984

Statement of Evidence:

Section corner common to Sections 19 & 20 T28 R21 and Sections 24 & 25 T28 R22.

- 1847 Government surveyors established section corner, set wood post, and tied corner to three witness trees:
Br Oak 20" S 60° W 18
Br. Oak 10" N 22° E 97
B Oak 11" S 48° E 98
- 1893 June 18, J.M. Oldham in Survey No. 144 states, stake at corner set by Ramsey County Surveyor. Remains of U.S. bearing tree stump SE'ly. Drove iron at face of stump.
- 1975 January 6, Washington County survey crew found a 8" x 8" granite monument with drill hole. Monument is down 0.50'
- 1976 October, Washington County survey crew placed a cast iron monument over 8" x 8" granite monument which had 1½' of fill on top of it due to road construction.

RECEIVED

JUN 21 1984

COUNTY OF WASHINGTON
SURVEYORS OFFICE