

CERTIFICATE OF LOCATION OF GOVERNMENT CORNER

N¹/₄ Corner of Section 26, Township 28, Range 22, 4th P.M.
STATE OF MINNESOTA, County of Washington

RECEIVED

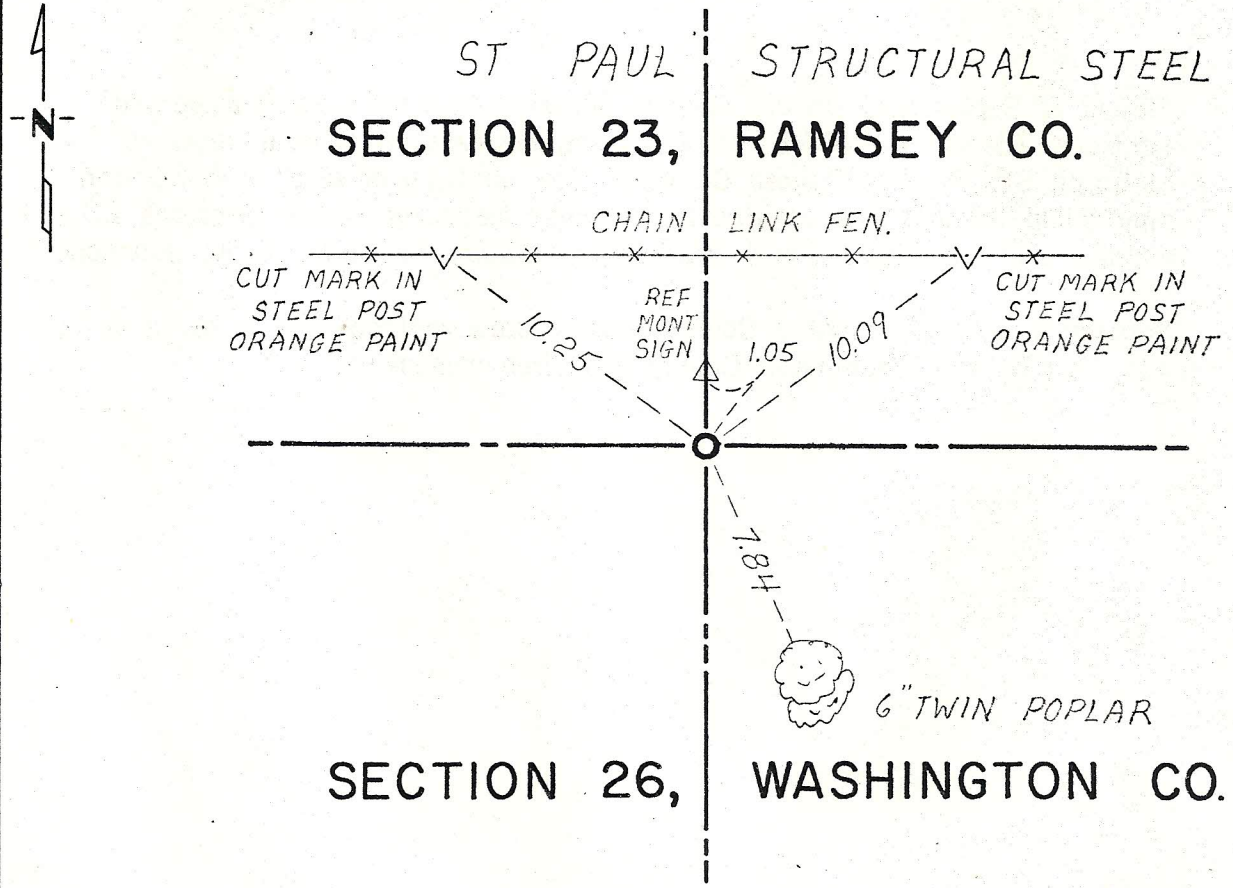
JUN 21 1984

At the corner location shown on the sketch:

COUNTY OF RAMSEY
SURVEYORS OFFICE

- On 9-13-1979 found a 1 in. x 6 ft. iron pipe.
DATE
- left monument as found, lowered monument, removed monument (explain)
- On 9-13-1979 placed a Washington County cast iron monument in place of
1 in. x 6 ft. iron pipe.
DATE

SKETCH OF REFERENCE TIES



TREE HAS FACE TIE NAIL AND DISC STAMPED WASH.CO. SURVEYOR

Statement of evidence relative to this corner location is on back of page.

I hereby certify that this document and the data contained herein was prepared by me or under my direct supervision.

Paul A. Johnson 12-18-79
SIGNATURE DATE

Registration No. 10938

Land Surveyor, Professional Engineer
 County Surveyor, County Engineer

OFFICE OF THE REGISTER OF DEEDS
County of _____

I hereby certify that this document was filed in the Reg. of Deeds office at _____ .M. on the _____ day of _____ A.D., 19 _____

Register of Deeds _____
By _____, Deputy

DOCUMENT NO. _____

Statement of Evidence:

Quarter corner common to Sections 23 & 26, T28 R22.

- 1847 Original government surveyors set post in a mound of earth & sod; Pit 8 links East.
- 1918 R/W map for Chicago Milwaukee & St. Paul Railroad notes distance of 1752 feet, along section line, between RR centerline and $\frac{1}{4}$ corner.
- 1948 July - September, F.J. Armstrong, Civil Engineer, surveyed part of Sec. 26, T28 R22. His plat of survey shows symbol ■ at this $\frac{1}{4}$ corner and notes: "Mon".
- 1979 August & September, Dakota County Surveyor Bernard Larson traversed Sections 23 and 26, T28 R22 in conjunction with several sections in South St. Paul of Dakota County. The position of a 1" x 6 ft. iron pipe found in place was verified by resurvey measurements in Sections 23 and 26 and consultation with Washington County Surveyor, P.A. Johnson.
- 1979 September 13, Washington County survey crew replaced the 1 in. x 6 ft. iron pipe with a Washington County cast iron monument.