

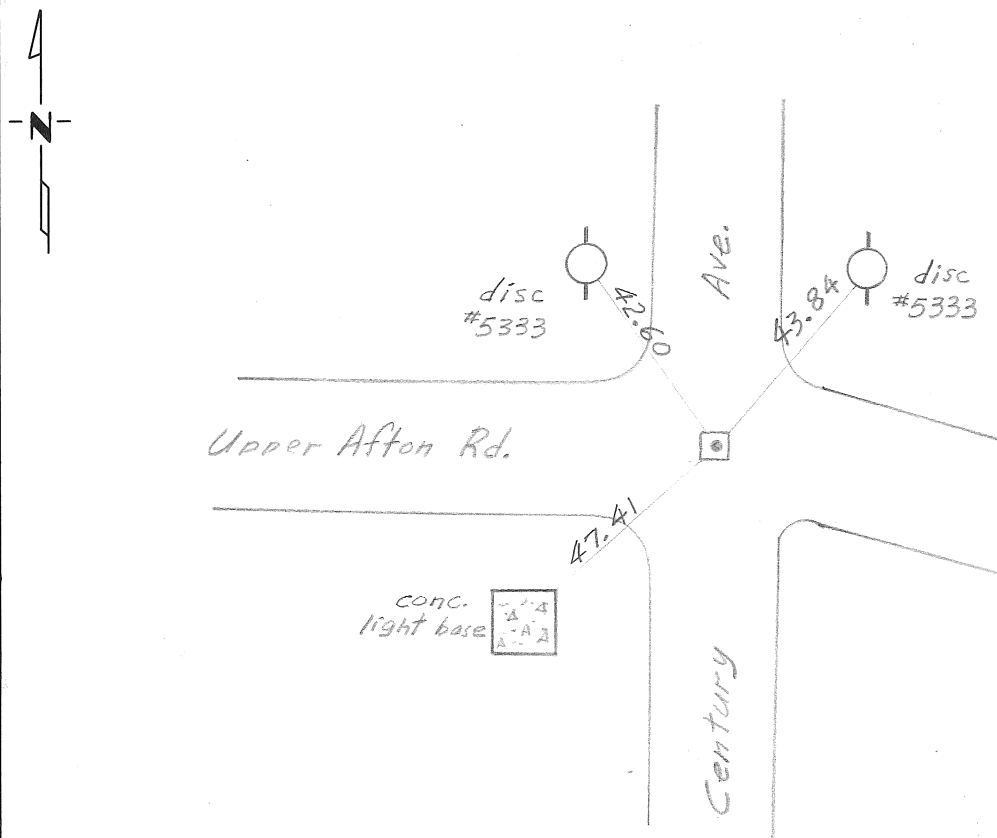
CERTIFICATE OF LOCATION OF GOVERNMENT CORNER

East quarter _____ Corner of Section 1, Township 28N, Range 22W, 4th P.M.
 STATE OF MINNESOTA, County of Ramsey and Washington

At the corner location shown on the sketch:

- On Oct 2, 1973 found a 8 in. square granite monument 7 in. below the
DATE bituminous surface.
- left monument as found,
 lowered monument,
 removed monument (explain)
- On Oct 2, 1973 placed a RR spike with straddle nails flush.
DATE

SKETCH OF REFERENCE TIES



Statement of evidence relative to this corner location is on back of page.

I hereby certify that this document and the data contained herein was prepared by me or under my direct supervision.

SIGNATURE DATE

Registration No. _____
 Land Surveyor, Professional Engineer
 County Surveyor, County Engineer

OFFICE OF THE REGISTER OF DEEDS
 County of _____

I hereby certify that this document was filed in the Reg. of Deeds office at _____ .M. on the _____ day of _____ A.D., 19 _____

Register of Deeds _____
 By _____, Deputy
 DOCUMENT NO. _____