

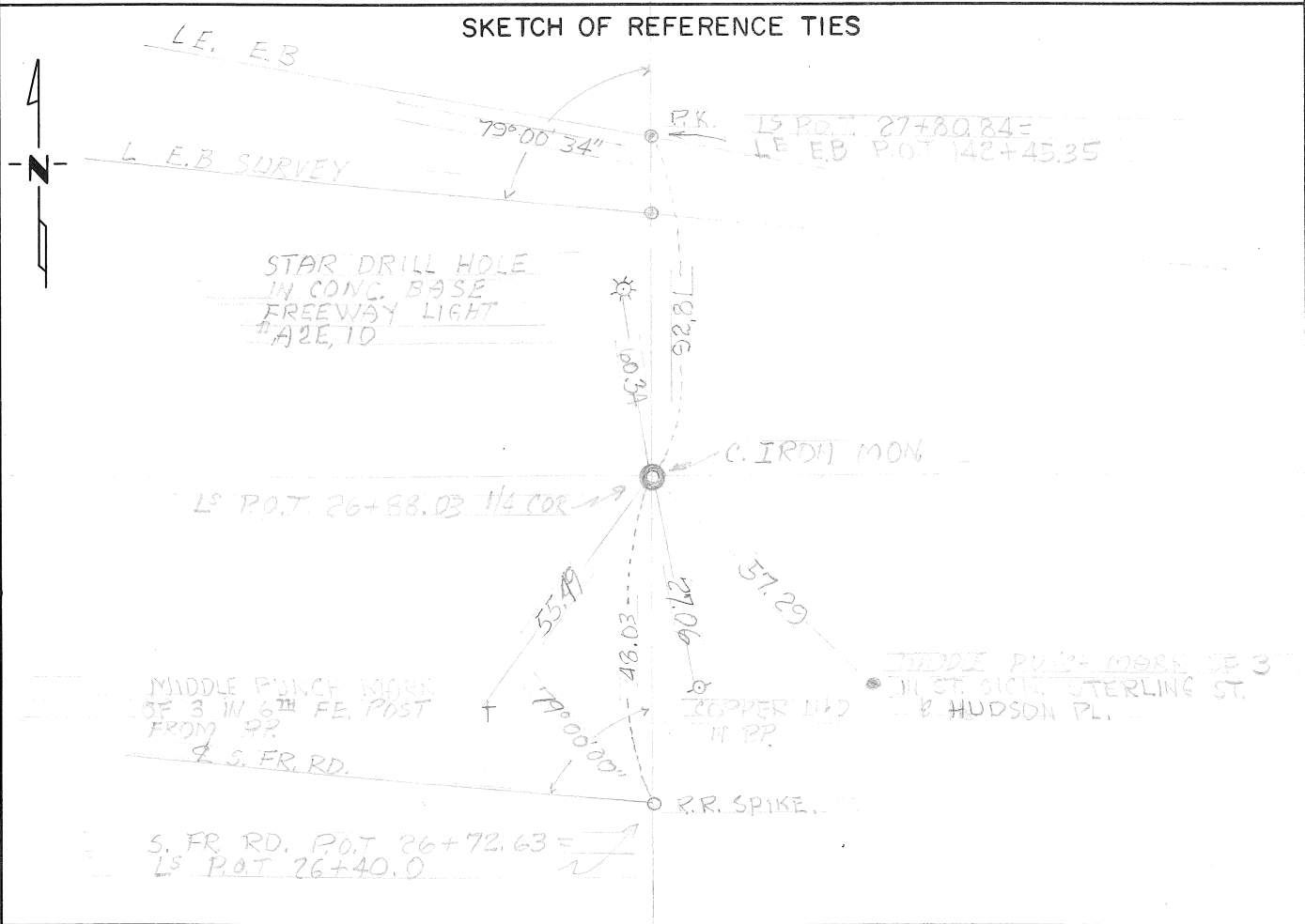
CERTIFICATE OF LOCATION OF GOVERNMENT CORNER

NORTH 1/4 Corner of Section 1, Township 28, Range 22, _____ P.M.

STATE OF MINNESOTA, County of RAMSEY

At the corner location shown on the sketch:

- On 9-20-71 found a GRANITE MONUMENT
DATE
- left monument as found, lowered monument, removed monument (explain)
- On 9-26-71 placed a CAST IRON MONUMENT
DATE



Statement of evidence relative to this corner location is on back of page.

I hereby certify that this document and the data contained herein was prepared by me or under my direct supervision.

SIGNATURE DATE

Registration No. _____

- Land Surveyor, Professional Engineer
- County Surveyor, County Engineer

OFFICE OF THE REGISTER OF DEEDS
County of _____

I hereby certify that this document was filed in the Reg. of Deeds office at _____ .M. on the _____ day of _____ A.D., 19 ____

Register of Deeds _____

By _____, Deputy

DOCUMENT NO. _____

Statement of Evidence:

SP. 6283 T.H. 94-392 ON 9-20-71 FOUND A GRANITE MON
DOWN 4.5 SET CAST IRON MON FLUSH. PLACED A 3/4" X 24" IRON PIN
UNDER SAID C.I. MON. "NOTE" THERE IS A TELE LINE 12" BELOW SURFACE
OF GROUND & ONLY 6" EAST OF THIS SAW. RAMSEY CO. C.I. MON
TIES BY S. FOX + CREW