

# CERTIFICATE OF LOCATION OF GOVERNMENT CORNER

W<sup>1</sup>/<sub>4</sub> Corner of Section 31, Township 29, Range 21, 4th P.M.

STATE OF MINNESOTA, County of Washington

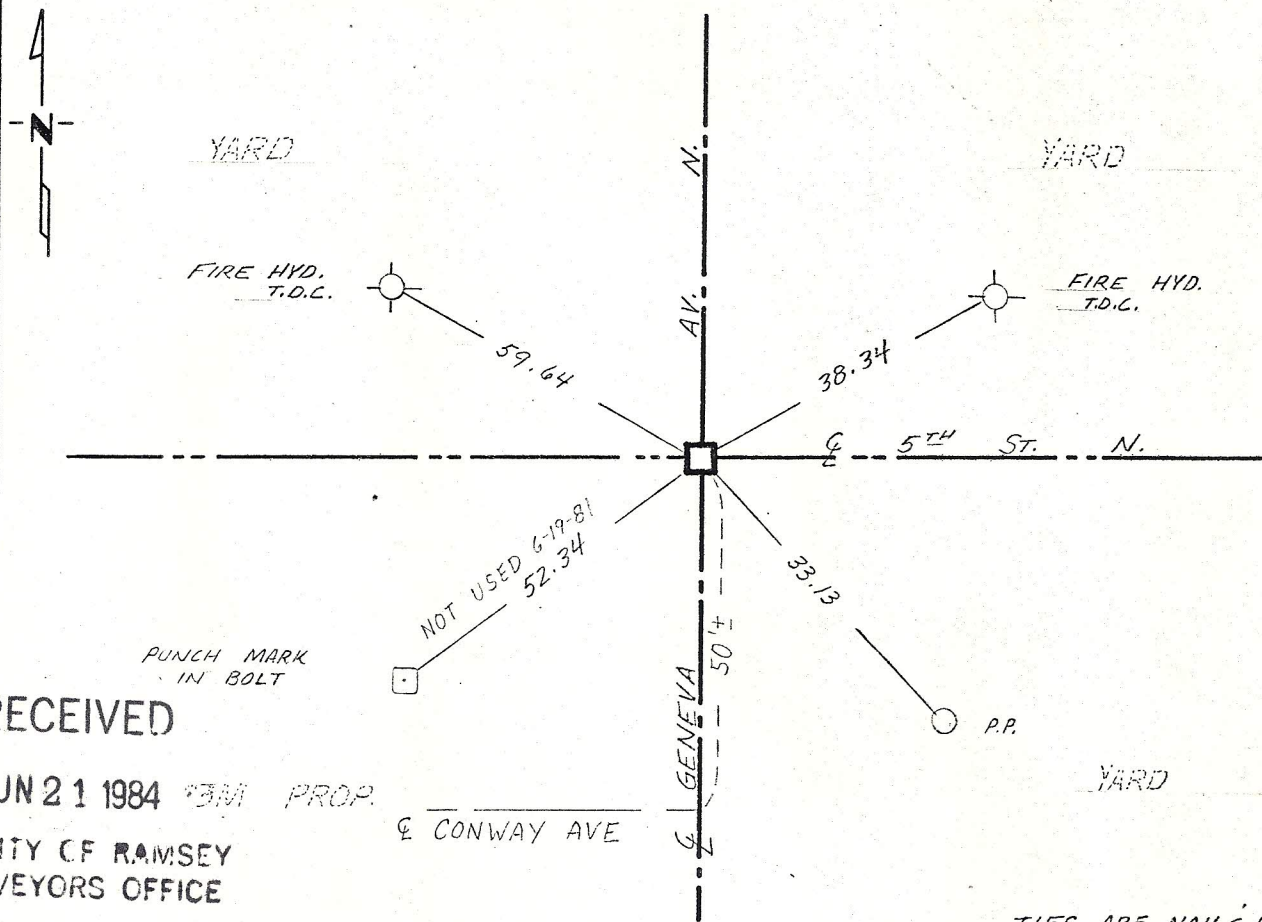
At the corner location shown on the sketch:

On 1-25-73 found a stone monument down 0.3'  
DATE

left monument as found,  lowered monument,  removed monument (explain)

On \_\_\_\_\_ placed a \_\_\_\_\_  
DATE

TIES REVISED 6-19-81 PRJ SKETCH OF REFERENCE TIES



RECEIVED

JUN 21 1984 3PM PROP.

COUNTY OF RAMSEY  
SURVEYORS OFFICE

E CONWAY AVE

TIES ARE NAIL & DISC

Statement of evidence relative to this corner location is on back of page.

I hereby certify that this document and the data contained herein was prepared by me or under my direct supervision.

Paul A. Johnson 1/15/76  
SIGNATURE DATE

Registration No. 10938

Land Surveyor,  Professional Engineer

County Surveyor,  County Engineer

OFFICE OF THE REGISTER OF DEEDS

County of \_\_\_\_\_

I hereby certify that this document was filed in the Reg. of Deeds office at \_\_\_\_\_ .M. on the \_\_\_\_\_ day of \_\_\_\_\_ A.D., 19\_\_\_\_

Register of Deeds \_\_\_\_\_

By \_\_\_\_\_, Deputy

DOCUMENT NO. \_\_\_\_\_

REC-100  
M

Statement of Evidence:

Quarter section corner common to Sections 31 T29 R21 and Section 36 T29 R22.

- 1847 Government surveyors set post at  $\frac{1}{4}$  section corner and marked two bearing trees.  
W Oak 8" N  $66^{\circ}$  W 40 = 26.40'  
Br. Oak 8" S  $50^{\circ}$  E 12 = 7.92'
- 1902 An 8" x 8" granite monument was placed in the Ramsey County re-survey.
- 1921 April 29 - May 7, Lewis W Clarke in Survey No. 349 shows that he set an iron pipe.
- 1973 Washington County survey crew found a stone down 0.3' as indicated from Ramsey County ties.

RECEIVED

JUN 2 1984

FOR THE COUNTY ENGINEER

BY