

CERTIFICATE OF LOCATION OF GOVERNMENT CORNER

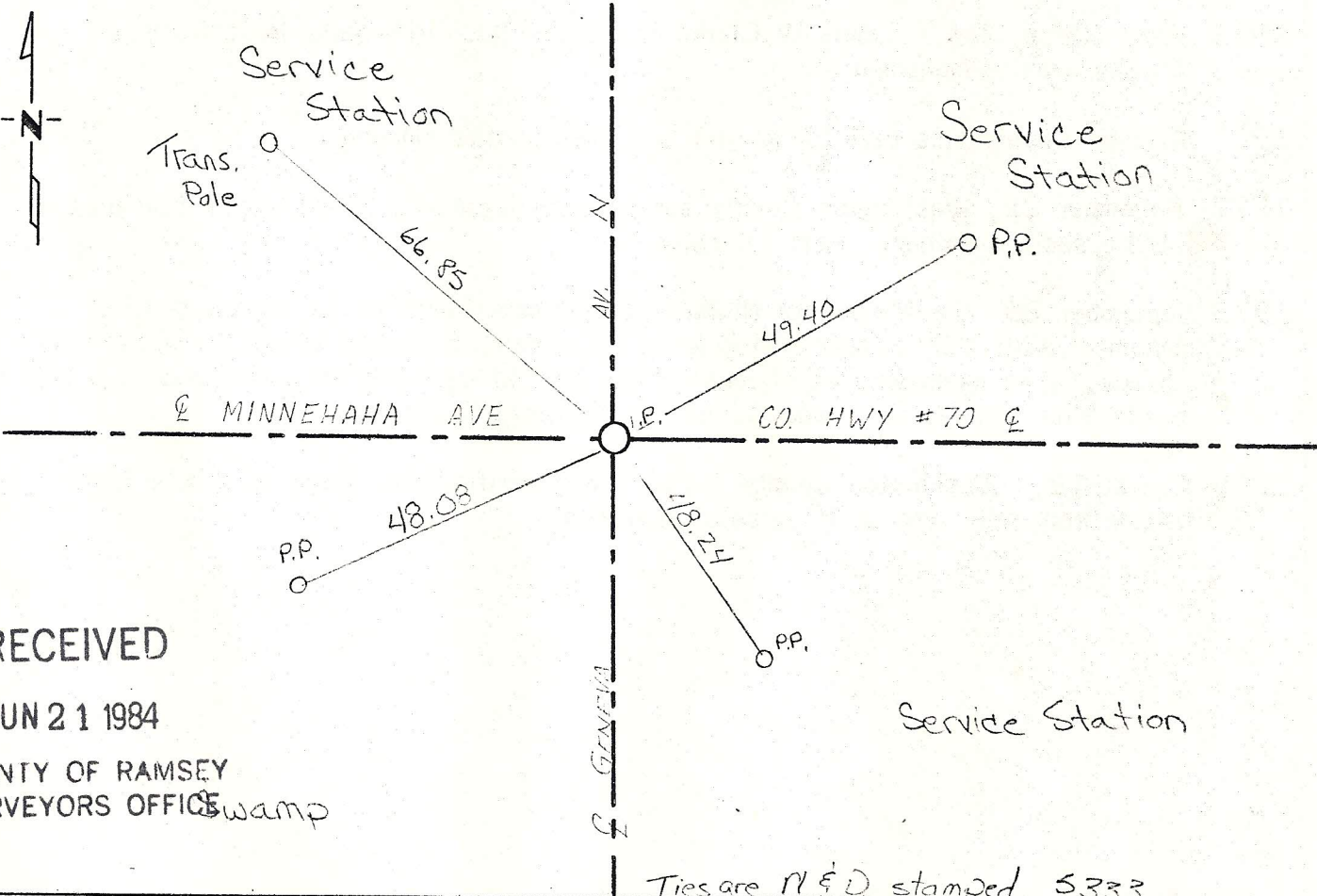
NW Corner of Section 31, Township 29, Range 21, 4th P.M.

STATE OF MINNESOTA, County of Washington

At the corner location shown on the sketch:

- On 11-22-72 found a 3/4" hollow iron pipe at the section corner over 8" Square ^{DATE} granite monument
 - left monument as found, lowered monument, removed monument (explain)
- On _____ placed a _____
DATE

SKETCH OF REFERENCE TIES



RECEIVED

JUN 21 1984

COUNTY OF RAMSEY
SURVEYORS OFFICE *Swamp*

Statement of evidence relative to this corner location is on back of page.

I hereby certify that this document and the data contained herein was prepared by me or under my direct supervision.

Paul A. Johnson 8/26/75
SIGNATURE DATE

Registration No. 10938

- Land Surveyor, Professional Engineer
- County Surveyor, County Engineer

OFFICE OF THE REGISTER OF DEEDS
County of _____

I hereby certify that this document was filed in the Reg. of Deeds office at _____ .M. on the _____ day of _____ A.D., 19 _____

Register of Deeds _____

By _____, Deputy

DOCUMENT NO. _____

MFD 100

Statement of Evidence:

Section corner common to Sections 30 and 31 T29 R21 and Sections 25 and 36 T29 R22 and is also on a County line boundary between Washington and Ramsey Counties.

- 1847 Government survey in 1847 set a post at the corner with two bearing trees.
W. Oak 8" N 66° W .40 = 26.40'
Blk. Oak 8" S 50° E .12 = 7.92'
- 1902 An 8" square granite monument was placed in the Ramsey County re-survey.
- 1905 March 21 and 22 J. Oldham in Survey No. 264 found the stump of one bearing tree NE. He also shows a symbol of a stone at corner.
- 1921 April 29 to May 7 Lewis W Clarke in Survey No. 349 calls for a Ramsey County granite monument.
- 1967 Ramsey County ties call for an iron pin over granite monument.
- 1972 November 22, Washington County survey crew located a 3/4" hollow iron pipe at the section corner. Left as found.
- 1973 September 25, the Minnesota Highway Department found an 8" square granite monument with a 3/4 inch drill hole in its center, 6 inches below the bituminous surface. The monument was occupied and tied in with reference ties and also tied in to the Minnesota State Plane Coordinate System, South Zone.
- 1975 August 18, Washington County Survey Crew verified that there is a 3/4 inch hollow iron pipe over an 8" granite monument.

RECEIVED

JUN 21 1981

COUNTY OF WASHINGTON
SURVEYOR OFFICE