

CERTIFICATE OF LOCATION OF GOVERNMENT CORNER

East quarter _____ Corner of Section 25, Township 29N, Range 22W, 4th P.M.

STATE OF MINNESOTA, County of Ramsey and Washington

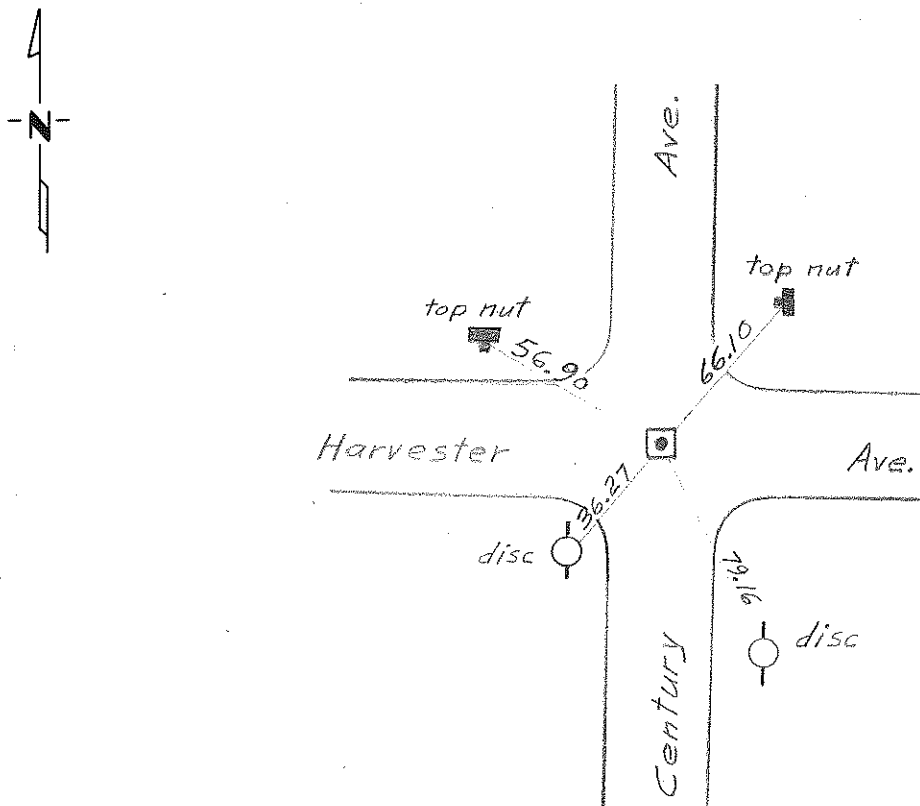
At the corner location shown on the sketch:

On Sep 12, 1973 found a 1/2 in. iron pipe flush directly over an 8 in. granite monument which was 1 ft below surface.

left monument as found, lowered monument, removed monument (explain)

On _____ placed a _____

SKETCH OF REFERENCE TIES



Statement of evidence relative to this corner location is on back of page.

I hereby certify that this document and the data contained herein was prepared by me or under my direct supervision.

SIGNATURE DATE

Registration No. _____

Land Surveyor, Professional Engineer

County Surveyor, County Engineer

OFFICE OF THE REGISTER OF DEEDS

County of _____

I hereby certify that this document was filed in the Reg. of Deeds office at _____ .M. on the _____ day of _____ A.D., 19 ____

Register of Deeds _____

By _____, Deputy

DOCUMENT NO. _____

On Sept 12, 1973 the Minn. Hwy. Dept.
found a $\frac{1}{2}$ in (I.D.) by 8 in. long iron pipe flush.
After setting straddle nails across the
pipe, a 8 in square granite mon. was
found 1 ft. below the bit surface and
directly beneath the iron pipe. The
mon. was tied in with reference ties
and the iron pipe restored to its
original position. On Sept. 25, 1973 the
iron pipe was tied in to the Minn.
State Plane Coordinate System,
South Zone. The coords. are available
in the MHD Oakdale office in
the Surveys Section.

Harvester $\frac{1}{2}$ 120

E $\frac{1}{4}$ COR SEC 25 T29 R22

KRM. CO. EMOK.