

CERTIFICATE OF LOCATION OF GOVERNMENT CORNER

W¹/₄ Corner of Section 30, Township 29, Range 21, 4th P.M.

STATE OF MINNESOTA, County of Washington

At the corner location shown on the sketch:

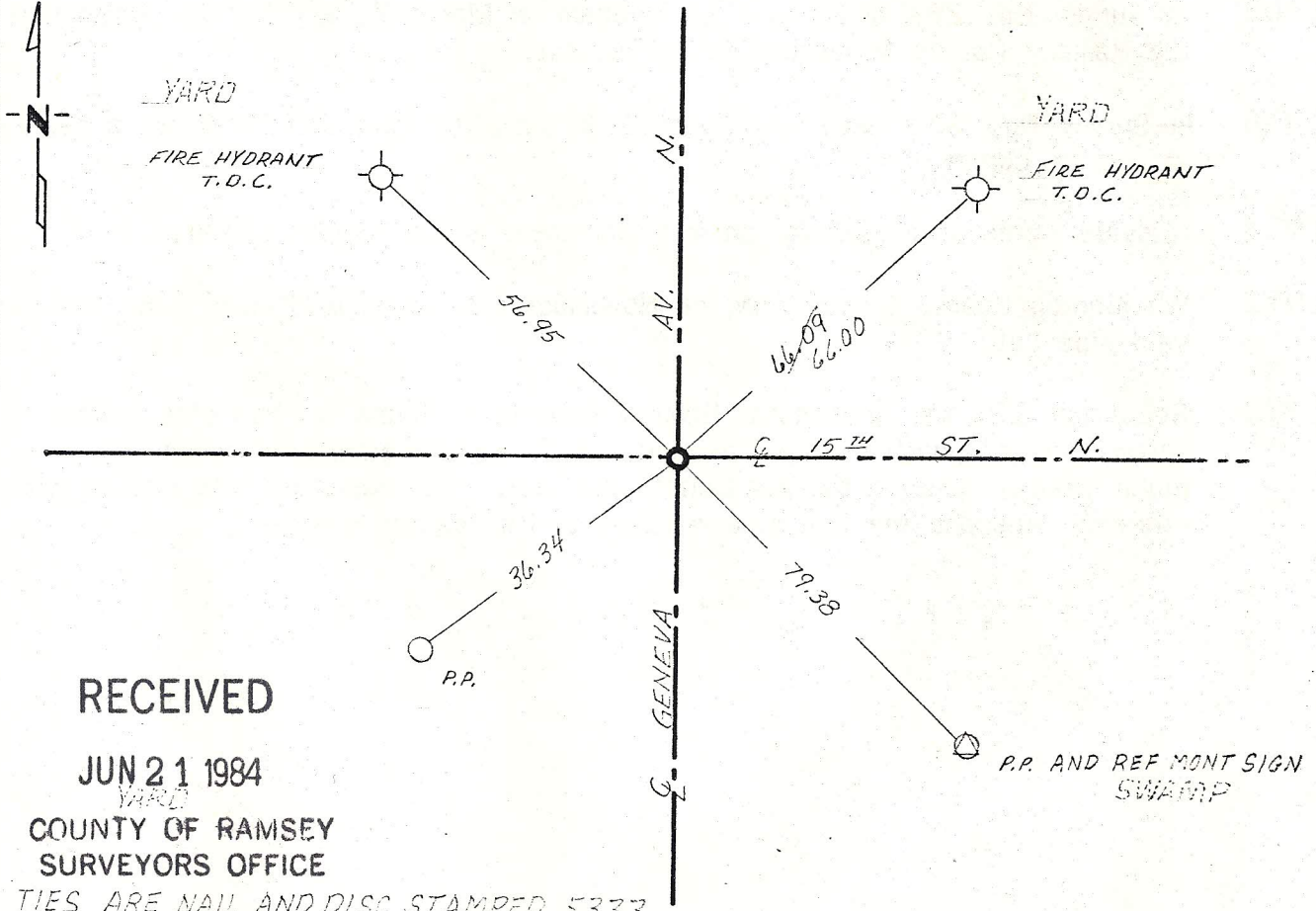
On 11-22-75 found a 1/2" iron pipe flush with surface directly above 8" x 8"
DATE granite monument.

left monument as found, lowered monument, removed monument (explain)

On _____ placed a _____
DATE

TIES REVISED 6-18-81 PRJ

SKETCH OF REFERENCE TIES



RECEIVED

JUN 21 1984

COUNTY OF RAMSEY
SURVEYORS OFFICE

TIES ARE NAIL AND DISC STAMPED 5333

Statement of evidence relative to this corner location is on back of page.

I hereby certify that this document and the data contained herein was prepared by me or under my direct supervision.

Paul A. Johnson 1/16/76
SIGNATURE DATE

Registration No. 10938

- Land Surveyor, Professional Engineer
- County Surveyor, County Engineer

OFFICE OF THE REGISTER OF DEEDS
County of _____

I hereby certify that this document was filed in the Reg. of Deeds office at _____ .M. on the _____ day of _____ A.D., 19 _____

Register of Deeds _____

By _____, Deputy

DOCUMENT NO. _____

M-1000

Statement of Evidence:

Quarter section corner common to Sections 25-29-22 and Sec 30 T29 R21

- 1847 Government surveyors set a post at the corner common to these sections, and marked two bearing trees.
W Oak 6" S 1° E 55 = 36.30'
W Oak 10" N 1° W 120 = 79.20
- 1883 Survey No. 15 made by Myron Shepard on May 24 & 25 shows that at said corner he found one U.S. W. Oak N 1° W 120 standing.
- 1902 An 8" granite monument was placed in the Ramsey County re-survey.
- 1905 In Survey No. 264 made by J.M. Oldham on March 21 & 22, he states that the Ramsey County Monument proved correct.
- 1908 In Survey No. 303 made by L.W Clarke on May 21 & 22 he shows a stone at section corner.
- 1934 Midvale Acres plat calls for an iron monument at the section corner.
- 1972 Washington County Survey crew on November 22, found a ½" iron pipe, and tied said pipe out.
- 1973 September 12, the Minnesota Highway Department found ½" iron pipe. After setting straddle nails across the pipe, an 8" square granite monument was found directly beneath the position of the iron. The monument was tied in with reference ties and the iron pipe restored to its original position.

RECEIVED
JUN 21 1984
COUNTY OF RAMSEY
SURVEYORS OFFICE