

# CERTIFICATE OF LOCATION OF GOVERNMENT CORNER

EAST 1/4 Corner of Section 30, Township 29, Range 22, \_\_\_\_\_ P.M.

STATE OF MINNESOTA, County of RANDOLPH

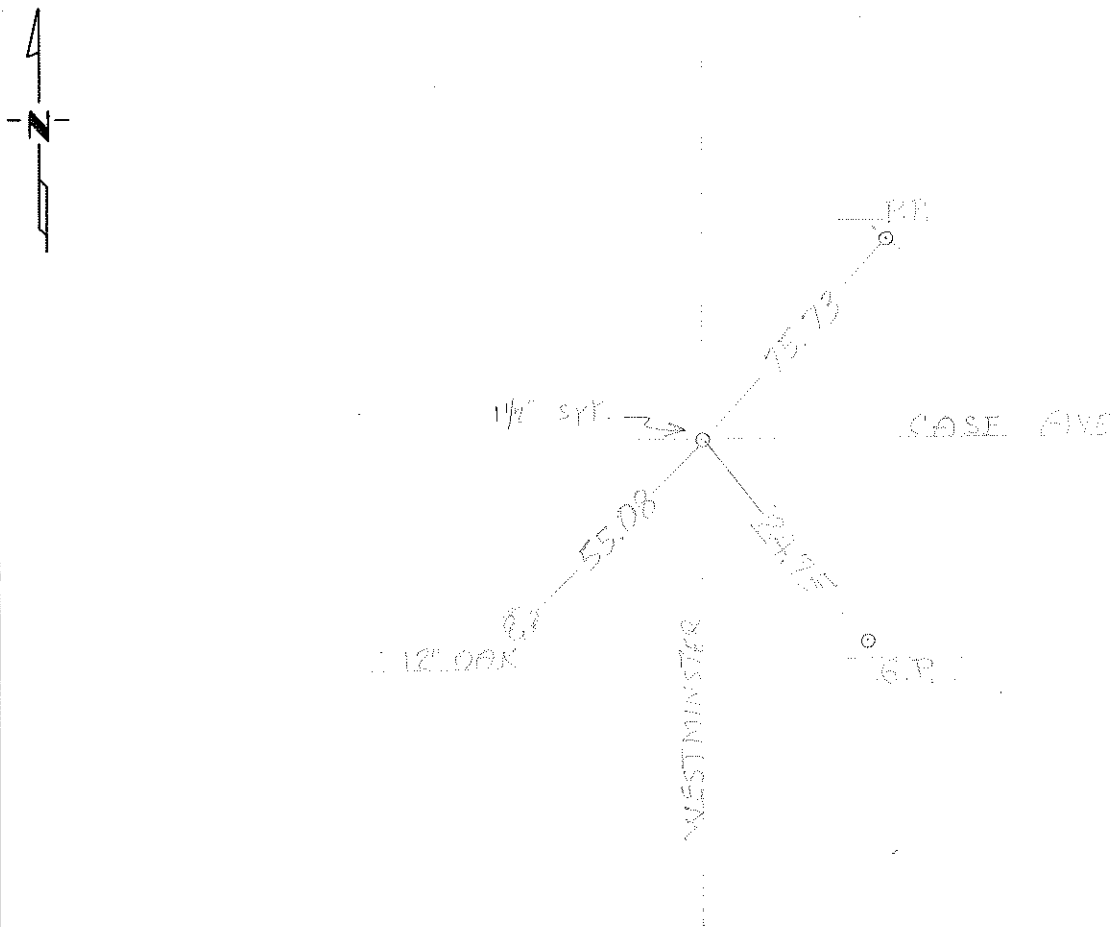
At the corner location shown on the sketch:

On Mar 1969 found a 1 1/2" SDR  
DATE

left monument as found,  lowered monument,  removed monument (explain)

On \_\_\_\_\_ placed a \_\_\_\_\_  
DATE

## SKETCH OF REFERENCE TIES



Statement of evidence relative to this corner location is on back of page.

I hereby certify that this document and the data contained herein was prepared by me or under my direct supervision.

\_\_\_\_\_  
SIGNATURE DATE

Registration No. \_\_\_\_\_

- Land Surveyor,  Professional Engineer
- County Surveyor,  County Engineer

OFFICE OF THE REGISTER OF DEEDS

County of \_\_\_\_\_

I hereby certify that this document was filed in the Reg. of Deeds office at \_\_\_\_\_ .M. on the \_\_\_\_\_ day of \_\_\_\_\_ A.D., 19 \_\_\_\_\_

Register of Deeds \_\_\_\_\_

By \_\_\_\_\_, Deputy

DOCUMENT NO. \_\_\_\_\_

Statement of Evidence:

TIES FROM D. ERNST, MAR 1959 POMONA, CA  
DOES NOT STATE WHAT IS IN THE TIES, BUT MENTION  
THEY ARE 2 AND 4 TYPE OF SOIL TIES & TYPE  
DEC. 8 1972