

~~CERTIFICATE OF LOCATION~~ OF GOVERNMENT CORNER

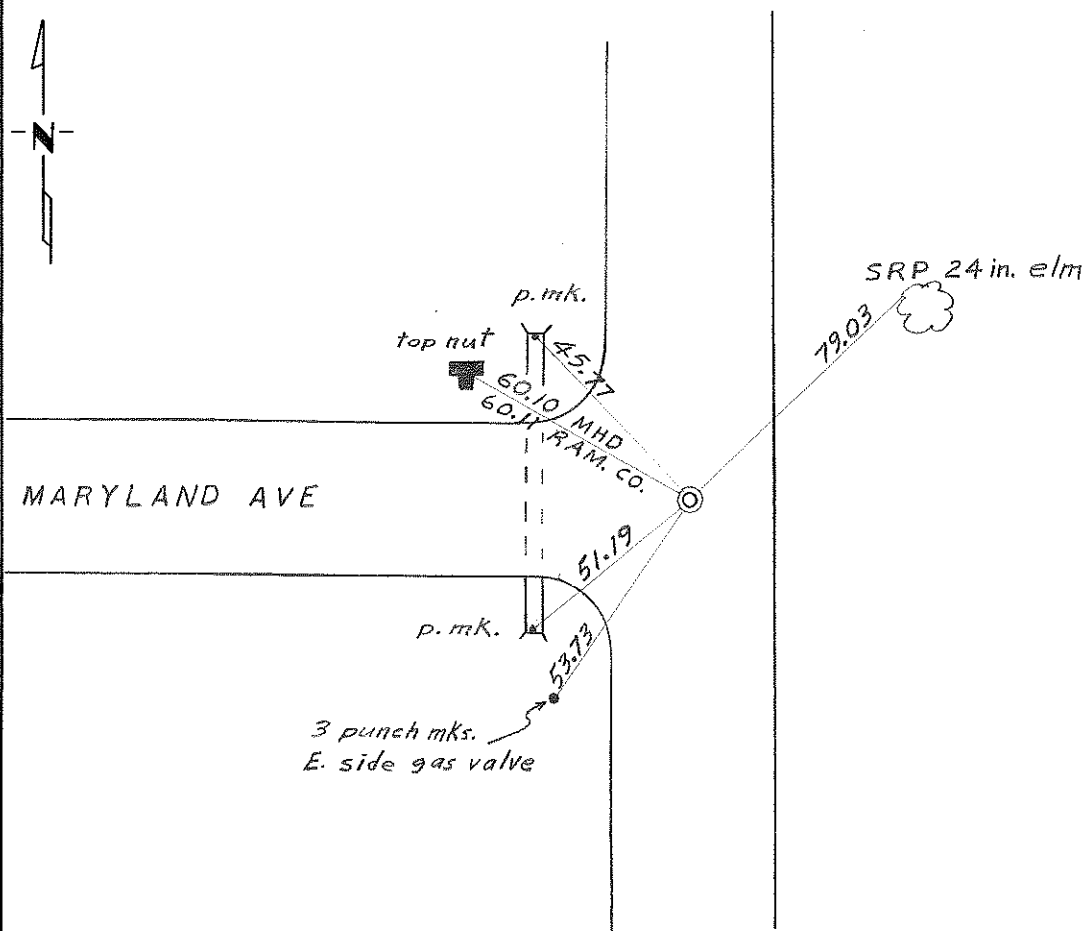
NORTHEAST Corner of Section 25, Township 29N, Range 22W, 4th P.M.

STATE OF MINNESOTA, County of RAMSEY AND WASHINGTON

At the corner location shown on the sketch:

- On _____ found a _____
DATE
- left monument as found, lowered monument, removed monument (explain)
- On SEPT 12, '73 placed a 3/4 in. iron pin with cap. (see back side)
DATE

SKETCH OF REFERENCE TIES



Statement of evidence relative to this corner location is on back of page.

I hereby certify that this document and the data contained herein was prepared by me or under my direct supervision.

SIGNATURE DATE

Registration No. _____

- Land Surveyor, Professional Engineer
- County Surveyor, County Engineer

OFFICE OF THE REGISTER OF DEEDS
County of _____

I hereby certify that this document was filed in the Reg. of Deeds office at _____ .M. on the _____ day of _____ A.D., 19 _____

Register of Deeds _____

By _____, Deputy

DOCUMENT NO. _____

MORE RESEARCH NEEDED !!

Statement of Evidence: NORTHEAST CORNER OF SECTION 25, T29N, R22W, 4th PM.

- 1847 A wood post was placed in the Public Land Survey.
- 1902 An 8 inch square granite monument was placed in the Ramsey County re-survey.
- 1973 On September 12, 1973 Dave Mattson of the Minnesota Highway Department dug a hole 2 feet deep and 1.5 feet in diameter and searched for evidence of the corner. Nothing was found. A large patching job in the bituminous roadway indicated that the corner was destroyed by recent sewer construction. A 3/4 inch iron pin with a brass cap was placed flush at the intersection of reference ties obtained from Minnesota Highway Department files in the District 9 office.

Several lot pins in the vicinity of this corner are not compatible with it. More research and evidence is needed.

From R/w map
MHD (roll)

NW Elm Hyd. 60.06 ✓
60.10

NE elm 79.03 ✓

SE ~~PP 27.68 out~~

SW. CMP 51.19 ✓

SW. 915 vent ✓
53.78

MARYLAND

Sec. Line H. LEE
OLD T.H. 100 Sept. 1965

153

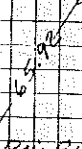
153

DIETZGEN NO. 36116

T.H. 120

SRP 10 18' ELM

SRP 11 14' Hyd



PIN 21.071

PK 1500

PK 1500



SRP N.P.P

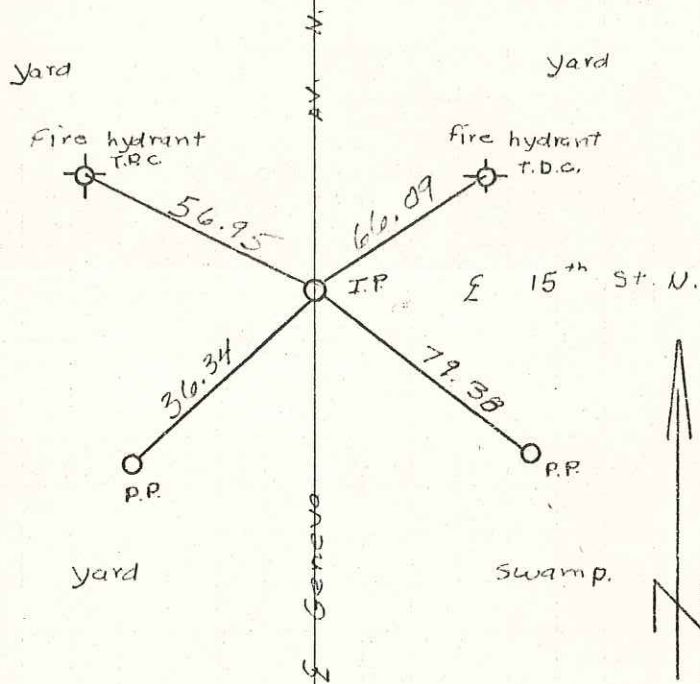
SRP 24' QUAR
Box Block



22 Nov 1972 28° cloudy L.B. B.S.

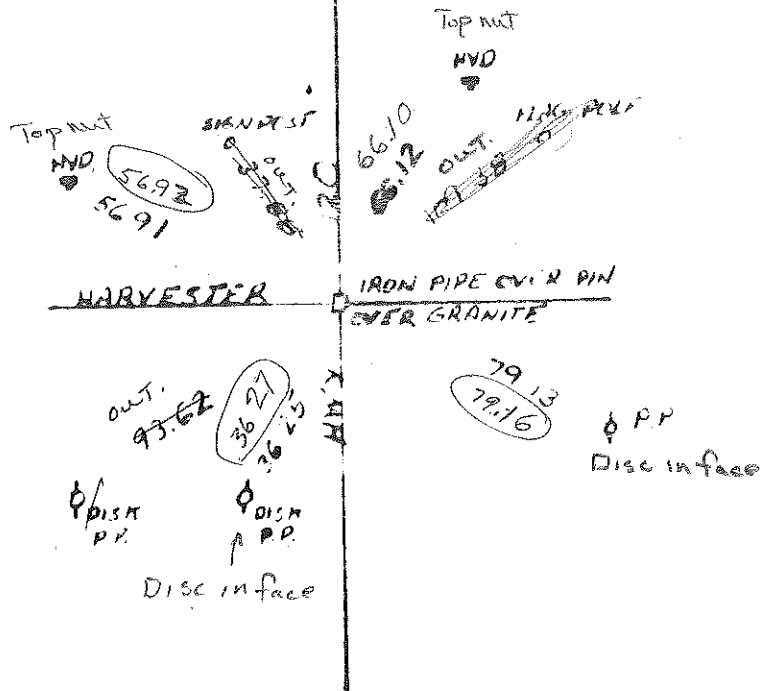
E 1/4 COR SEC 25 T 29 R 22
W 1/4 Cor Sec 30 T 29 R 21

Found 1/2" I.P. flush



Ties have nails & discs stamped
5333

E. 1/4 COR. SEC. 25-T29-R22



Circled distances by K.V.W
12-3-74