

# CERTIFICATE OF LOCATION OF GOVERNMENT CORNER

NORTH 1/4 Corner of Section 30, Township 29, Range 22, \_\_\_\_\_ P.M.

STATE OF MINNESOTA, County of RAMSEY

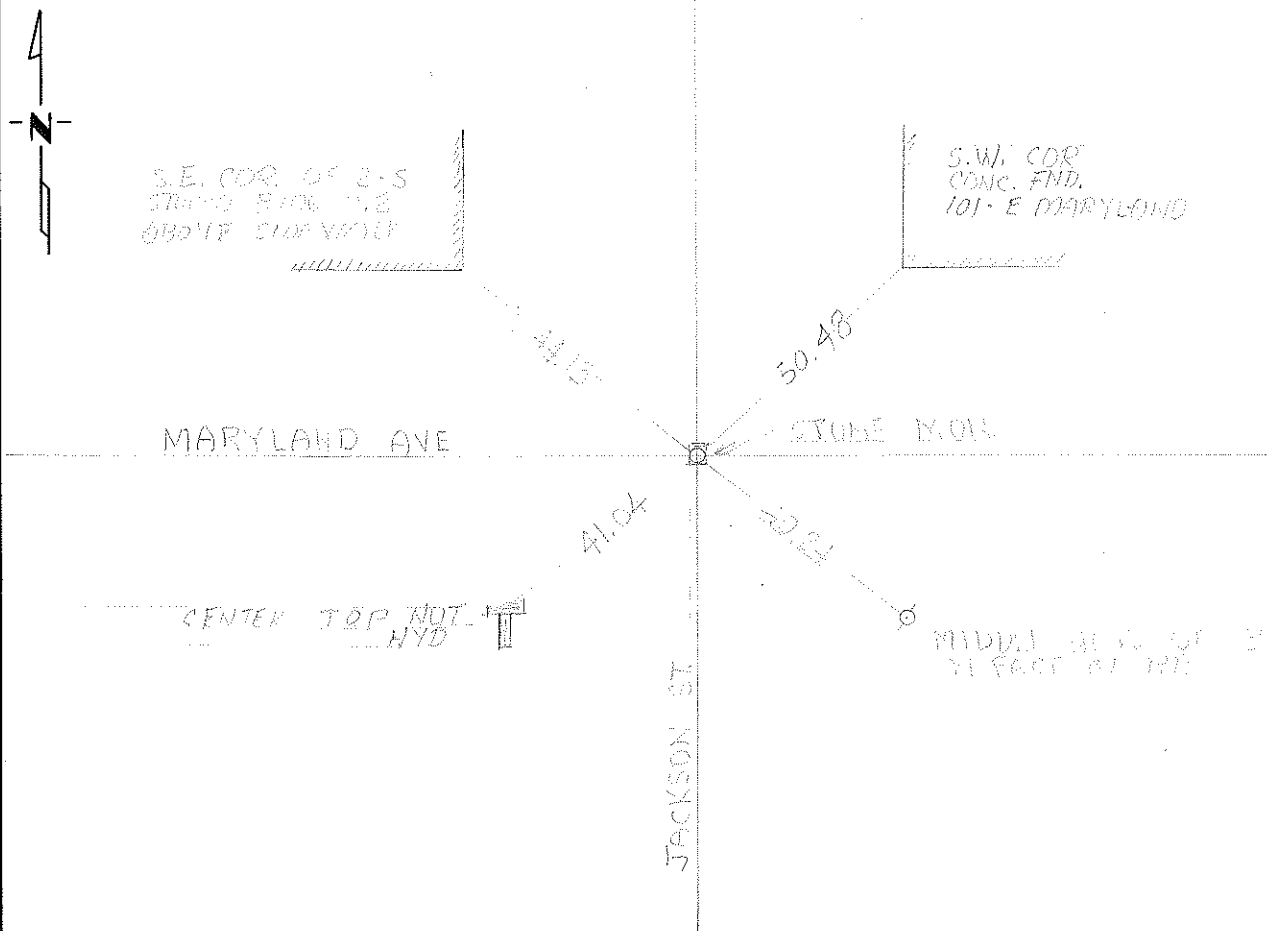
At the corner location shown on the sketch:

On 5-24-71 found a STONE MONUMENT WITH DRILL HOLE  
DATE

left monument as found,  lowered monument,  removed monument (explain)

On \_\_\_\_\_ placed a \_\_\_\_\_  
DATE

## SKETCH OF REFERENCE TIES



Statement of evidence relative to this corner location is on back of page.

I hereby certify that this document and the data contained herein was prepared by me or under my direct supervision.

\_\_\_\_\_  
SIGNATURE DATE

Registration No. \_\_\_\_\_

Land Surveyor,  Professional Engineer

County Surveyor,  County Engineer

OFFICE OF THE REGISTER OF DEEDS

County of \_\_\_\_\_

I hereby certify that this document was filed in the Reg. of Deeds office at \_\_\_\_\_ .M. on the \_\_\_\_\_ day of \_\_\_\_\_ A.D., 19 \_\_\_\_

Register of Deeds \_\_\_\_\_

By \_\_\_\_\_, Deputy

DOCUMENT NO. \_\_\_\_\_

**Statement of Evidence:**

NOTE 5-24-71 S.P. 6230 S. FAX & CHON. STONE MONUMENT  
WITH DRILL HOLE FLUSH WITH TOP CONCRETE FOUNDATION.