

# CERTIFICATE OF LOCATION OF GOVERNMENT CORNER

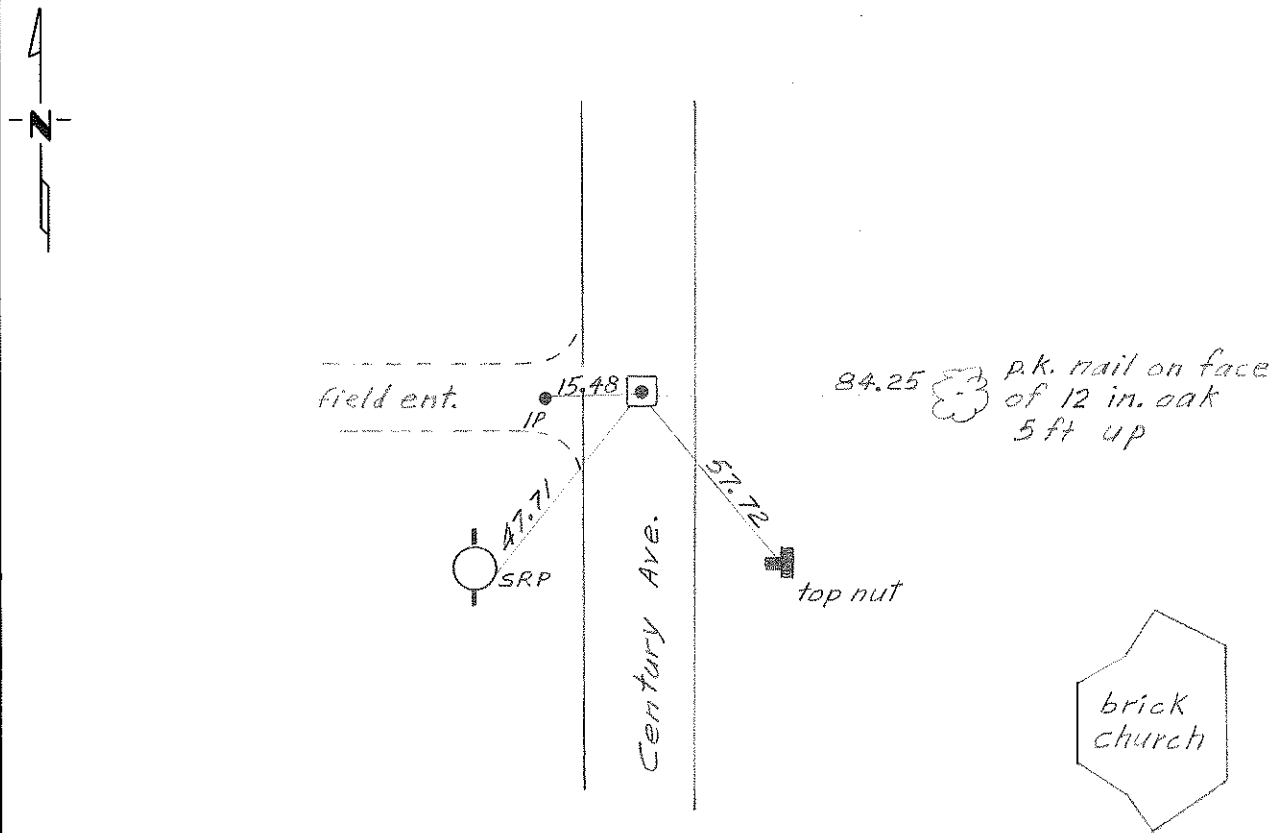
East quarter \_\_\_\_\_ Corner of Section 24, Township 29N, Range 22W, 4th P.M.

STATE OF MINNESOTA, County of Ramsey and Washington

At the corner location shown on the sketch:

- On Sep 13, 1973 found a 1/2 in. iron pipe directly above an 8 in. granite monument which was 8 in. below the surface.  
DATE
- left monument as found,  lowered monument,  removed monument (explain)
- On \_\_\_\_\_ placed a \_\_\_\_\_  
DATE

### SKETCH OF REFERENCE TIES



Statement of evidence relative to this corner location is on back of page.

I hereby certify that this document and the data contained herein was prepared by me or under my direct supervision.

\_\_\_\_\_  
SIGNATURE DATE

- Registration No. \_\_\_\_\_
- Land Surveyor,  Professional Engineer
  - County Surveyor,  County Engineer

#### OFFICE OF THE REGISTER OF DEEDS

County of \_\_\_\_\_

I hereby certify that this document was filed in the Reg. of Deeds office at \_\_\_\_\_ .M. on the \_\_\_\_\_ day of \_\_\_\_\_ A.D., 19 \_\_\_\_

Register of Deeds \_\_\_\_\_

By \_\_\_\_\_, Deputy

DOCUMENT NO. \_\_\_\_\_

E  $\frac{1}{4}$  Sec. 24 T29 R22

On Sept. 13, 1973 the Minn. Hwy. Dept. found a  $\frac{1}{2}$  in. (i.o.) by 6 in. long iron pipe 2 in. below the bit surface. After setting straddle nails across the pipe, it was removed and an 8 in square granite mon. with a  $\frac{3}{4}$  in. drill hole in its center was found directly beneath the pipe, 8 in. below the bit surface. The mon. was occupied and tied in with reference ties. The iron pipe was then restored to its original position.

On Sept. 25, 1973, the  $\frac{1}{2}$  in. iron pipe was tied in to the Minnesota State Plane Coordinate System, South Zone. The results are with in the NAD 83. Off by 14.5 in. East.

三