

CERTIFICATE OF LOCATION OF GOVERNMENT CORNER

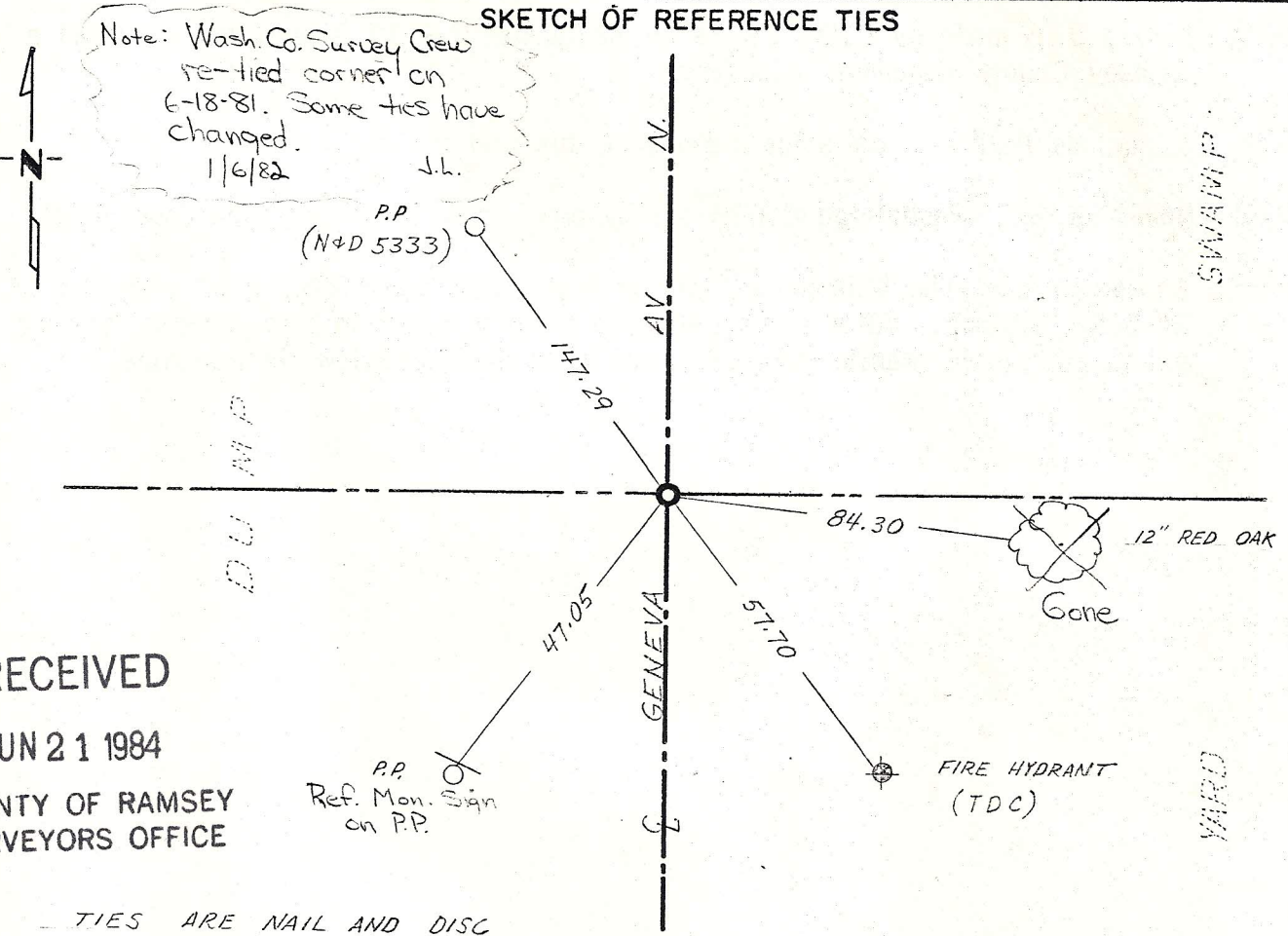
W $\frac{1}{4}$ Corner of Section 19, Township 29, Range 21, 4th P.M.

STATE OF MINNESOTA, County of Washington

At the corner location shown on the sketch:

- On 11-22-75 found a 1/2" iron pipe down 0.2' over 8" square granite monument
DATE
- left monument as found, lowered monument, removed monument (explain)
- On _____ placed a _____
DATE

SKETCH OF REFERENCE TIES



RECEIVED

JUN 21 1984

COUNTY OF RAMSEY
SURVEYORS OFFICE

Statement of evidence relative to this corner location is on back of page.

I hereby certify that this document and the data contained herein was prepared by me or under my direct supervision.

Pavel G. Johnson 1/15/76
SIGNATURE DATE

Registration No. 10938

Land Surveyor, Professional Engineer

County Surveyor, County Engineer

OFFICE OF THE REGISTER OF DEEDS

County of _____

I hereby certify that this document was filed in the Reg. of Deeds office at _____ .M. on the _____ day of _____ A.D., 19 _____

Register of Deeds _____

By _____, Deputy

DOCUMENT NO. _____

ME
B.O. 7-1984

Statement of Evidence:

Quarter Section corner common to Sections 24 T29 R22 & Sec. 19 T29 R21.

- 1847 Government surveyors set a post at quarter section corner and marked two bearing trees.
B. Oak 8" N 71° E 49=32.24
W. Oak 10" S 71° W 63=41.58
- 1883 Survey No 15 made by Myron Shepard in May states U.S. corner destroyed. Also he found roots and pit of Bl. Oak 18" N 35° E 0.61.
- 1902 An 8" granite monument was placed in the Ramsey County re-survey.
- 1919 Survey 326 made by L.W. Clarke on September 5 - 11 shows that he found a Ramsey County monument in position.
- 1958 Landglade Park plat calls for a stone at this corner.
- 1972 November 22, Washington County survey crew found a ½" iron pipe down 0.2'
- 1973 September 13, The Minnesota Highway Department found a ½" x 6" iron pipe 2" below surface. After setting straddle nails across iron pipe, it was removed and an 8" square granite monument was found directly below the iron pipe.

RECEIVED
JUN 2 1981
COUNTY OF RAMSEY
SURVEYORS OFFICE