

# CERTIFICATE OF LOCATION OF GOVERNMENT CORNER

NORTHEAST Corner of Section 24, Township 29N, Range 22W, 4th P.M.

STATE OF MINNESOTA, County of RAMSEY AND WASHINGTON

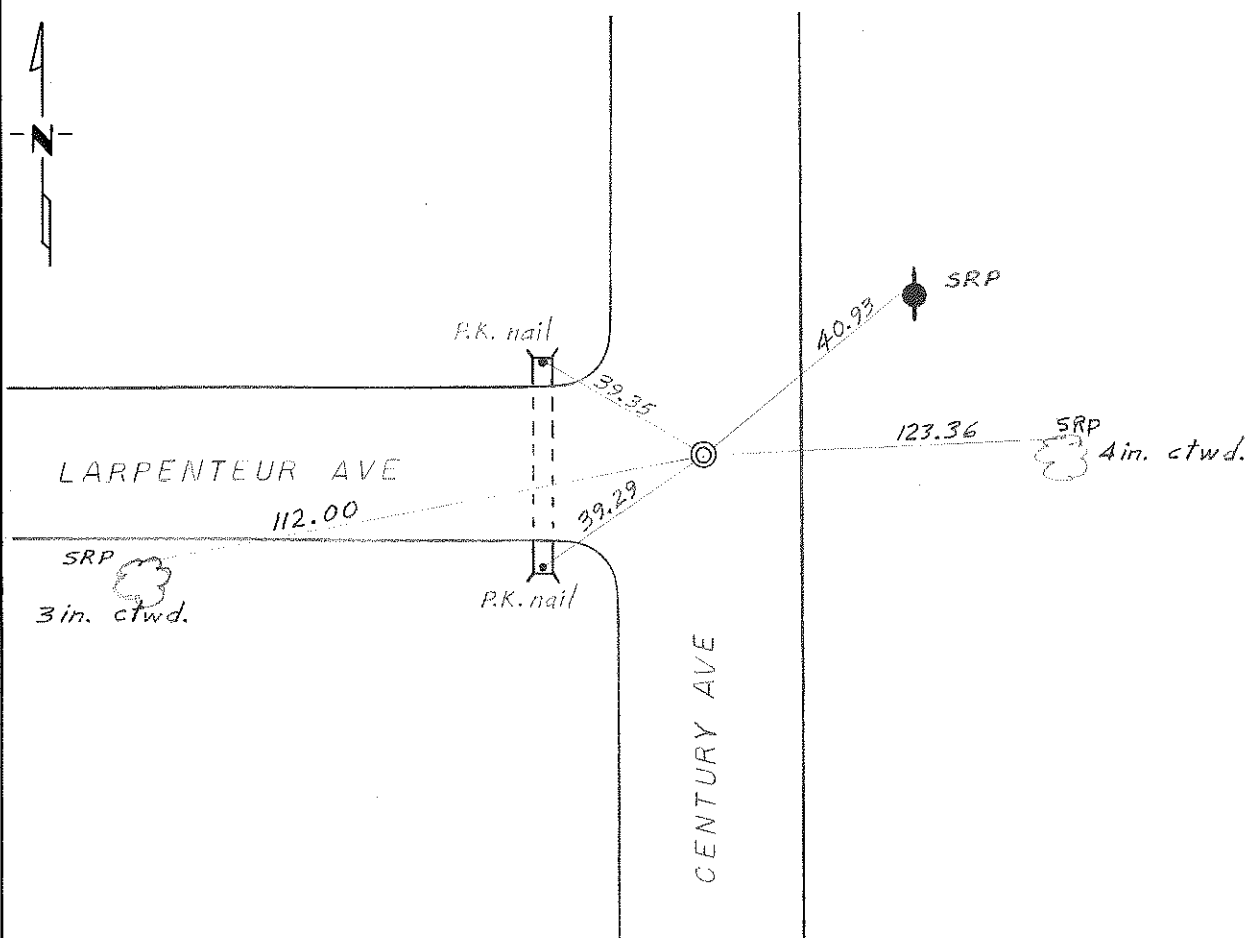
At the corner location shown on the sketch:

On Sept 25, '73 found a 8 in. square granite monument 0.3ft below the  
DATE bituminous surface.

left monument as found,  lowered monument,  removed monument (explain)

On Sept 25, '73 placed a 3/4 in. iron pin flush.  
DATE

### SKETCH OF REFERENCE TIES



Statement of evidence relative to this corner location is on back of page.

I hereby certify that this document and the data contained herein was prepared by me or under my direct supervision.

\_\_\_\_\_  
SIGNATURE                      DATE

Registration No. \_\_\_\_\_

- Land Surveyor,  Professional Engineer  
 County Surveyor,  County Engineer

OFFICE OF THE REGISTER OF DEEDS  
 County of \_\_\_\_\_

I hereby certify that this document was filed in the Reg. of Deeds office at \_\_\_\_\_ .M. on the \_\_\_\_\_ day of \_\_\_\_\_ A.D., 19 \_\_\_\_\_

Register of Deeds \_\_\_\_\_

By \_\_\_\_\_, Deputy

DOCUMENT NO. \_\_\_\_\_