

CERTIFICATE OF LOCATION OF GOVERNMENT CORNER

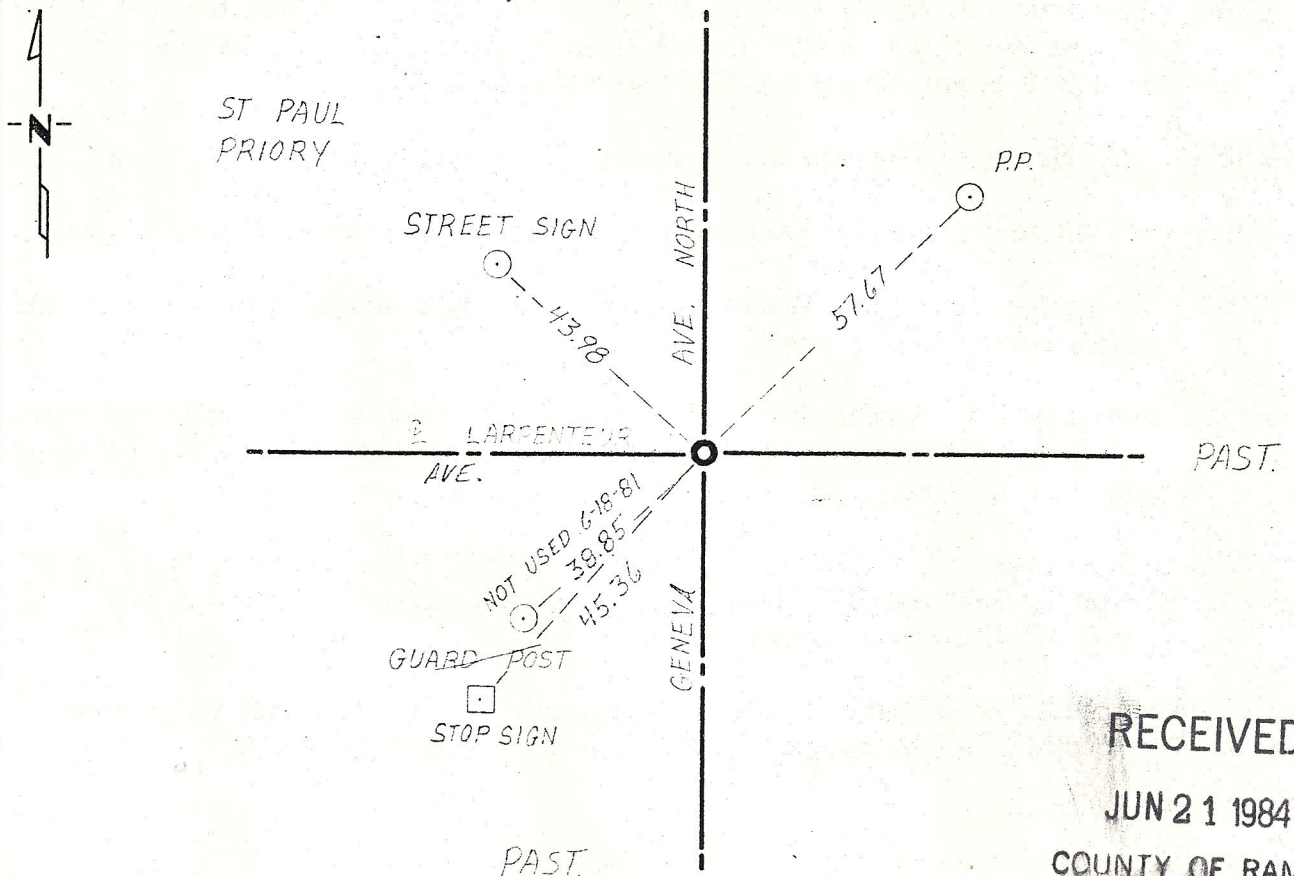
SW Corner of Section 18, Township 29, Range 21, 4th P.M.

STATE OF MINNESOTA, County of Washington

At the corner location shown on the sketch:

- On 1-24-73 found a 8" square granite monument 0.3 feet below the bituminous Surface
 left monument as found, lowered monument, removed monument (explain)
- On 9-25-73 placed a 3/4" iron pin flush over granite monument

TIES REVISED 6-18-81 PRJ SKETCH OF REFERENCE TIES



RECEIVED
 JUN 21 1984
 COUNTY OF RAMSEY
 SURVEYORS OFFICE

TIES HAVE NAILS & DISCS STAMPED 5333

Statement of evidence relative to this corner location is on back of page.

I hereby certify that this document and the data contained herein was prepared by me or under my direct supervision.

Paul A. Johnson 5/25/76
 SIGNATURE DATE

Registration No. 10938

- Land Surveyor, Professional Engineer
- County Surveyor, County Engineer

OFFICE OF THE REGISTER OF DEEDS
County of _____

I hereby certify that this document was filed in the Reg. of Deeds office at _____ .M. on the _____ day of _____ A.D., 19 _____

Register of Deeds _____

By _____, Deputy

DOCUMENT NO. _____

Doc
 1807
 M
 1807

Statement of Evidence:

Section corner common to Sections 18 & 19 T29 R21 and Sections 13 & 24 T29 R22.

- 1847 Original Government surveyors established section corner, set wood post and tied corner to three trees:
White Oak 8" S 85° E 24 lks.
White Oak 8" N 32° W 25 lks.
White Oak 8" N 17° E 36 lks.
- 1883 Myron Shepard in Survey No. 15 states U.S. witness tree S 85° E 24 standing. The other witness trees gone. May 25, 1883
- 1884 November 20, Myron Shepard in Survey No. 52 states that the last U.S. witness White Oak S 85° E 24 lately grubbed out. But the position of it was plainly seen also find the old stake hole.
- 1888 June 6, Myron Shepard in Survey No. 88 shows stake at U.S. corner.
- 1902 8 inch square granite monument was placed in the Ramsey County resurvey.
- 1919 September 11, L.W. Clarke in Survey No. 326 shows stone at corner and states monument not found.
- 1973 January 24, Washington County survey crew found an 8" granite monument 30' below bituminous road surface. Monument was as indicated on Ramsey County ties.
- 1973 September 25, Minnesota Highway Department (Dave Mattson) found an 8" granite monument 0.3' below the bituminous surface. Placed a 3/4" iron pin flush over granite monument.
- 1974 August, Washington County surveyor verified the position of the granite monument by the complete subdivision of Sections 18 & 19.