

CERTIFICATE OF LOCATION OF GOVERNMENT CORNER

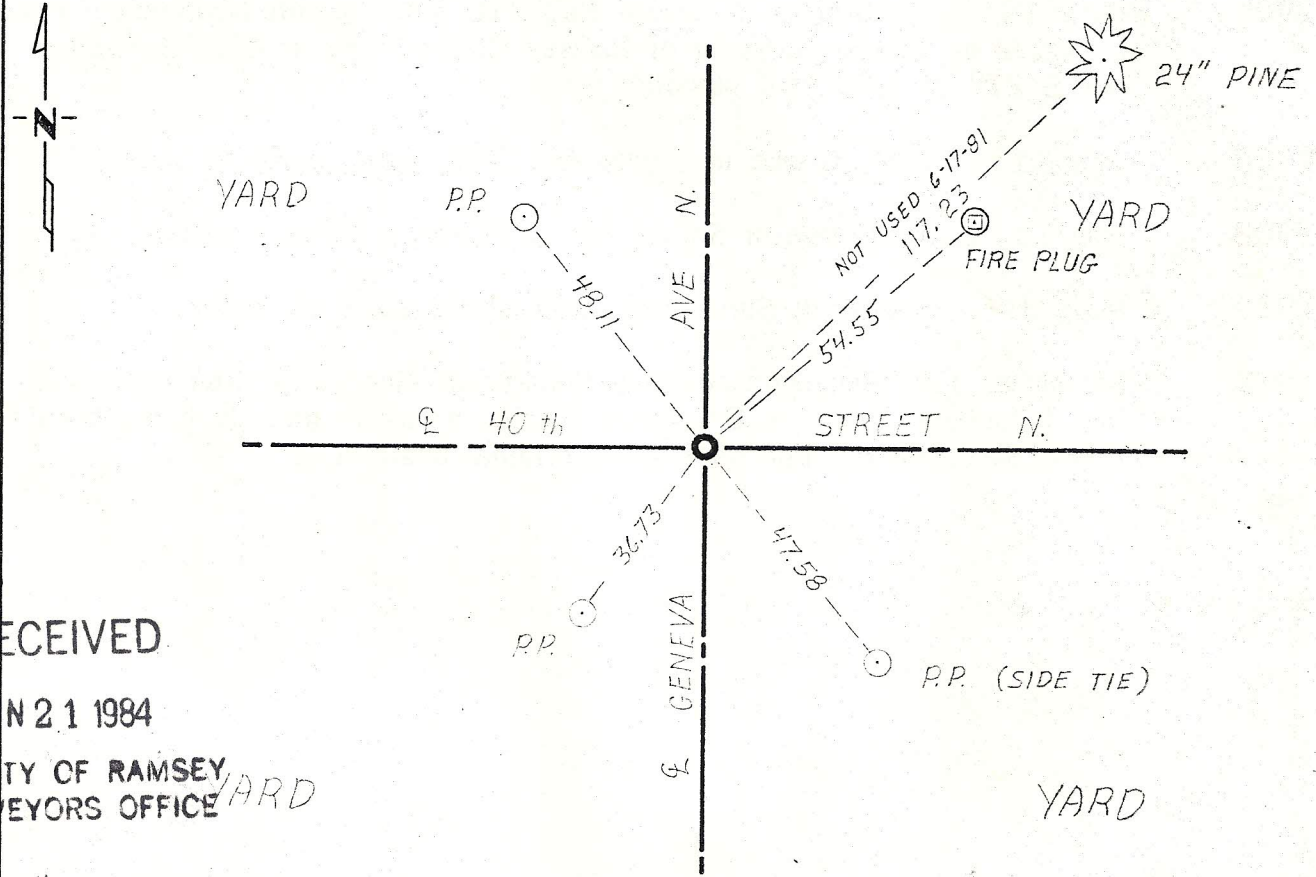
SW Corner of Section 7, Township 29, Range 21, 4th P.M.

STATE OF MINNESOTA, County of Washington

At the corner location shown on the sketch:

- On 11-13-73 found a 8" square granite monument down 1'. 1/2" iron pipe above
DATE granite monument.
- left monument as found, lowered monument, removed monument (explain)
- On _____ placed a _____
DATE

TIES REVISED 6-17-81 PRJ SKETCH OF REFERENCE TIES



RECEIVED
 JUN 21 1984
 COUNTY OF RAMSEY
 SURVEYORS OFFICE

TIES HAVE NAILS & DISCS STAMPED 5333

Statement of evidence relative to this corner location is on back of page.

I hereby certify that this document and the data contained herein was prepared by me or under my direct supervision.

Paul A. Johnson 5/27/76
 SIGNATURE DATE

Registration No. 10938

Land Surveyor, Professional Engineer

County Surveyor, County Engineer

OFFICE OF THE REGISTER OF DEEDS
 County of _____

I hereby certify that this document was filed in the Reg. of Deeds office at _____ .M. on the _____ day of _____ A.D., 19 _____

Register of Deeds _____
 By _____, Deputy

DOCUMENT NO. _____

MF
FEB 07

Statement of Evidence:

Section corner common to sections 7 & 18 T29 R21 and sections 12 & 13 T29 R22

- 1847 Original government surveyors established section corner, set wood post and tied corner to three tie trees.
B Oak 12" S 58° E 45
W Oak 12" S 22° W 95
W Oak 10" N 53° W 32
- 1884 November 20, Myron Shepard in Survey No. 52 states stump of U.S. witness tree NW'ly standing 0.32
- 1901 June 18 J.M. Oldham in Survey No. 218 found granite monument correctly placed by County Surveyor of Ramsey County. Stump of U.S. white oak S 27° W .95 still standing.
- 1908 May 13, L.W. Clarke in Survey No. 301 shows stone at corner.
- 1908 May 25, L.W. Clarke in Survey No. 304 shows stone at corner.
- 1938 May, J.F. Simonet in Survey No. 587 shows stone at corner.
- 1973 September 13, Minnesota Highway Department found a ½" iron pipe flush Dug 1 foot and found an 8" square granite monument directly beneath said pipe. Replaced the iron pipe in its original position.

RECEIVED
MAY 1 1904
COUNTY OF RAMSEY
SURVEYORS OFFICE