

# CERTIFICATE OF LOCATION OF GOVERNMENT CORNER

East quarter Corner of Section 12, Township 29N, Range 22W, 4th P.M.

STATE OF MINNESOTA, County of Ramsey and Washington

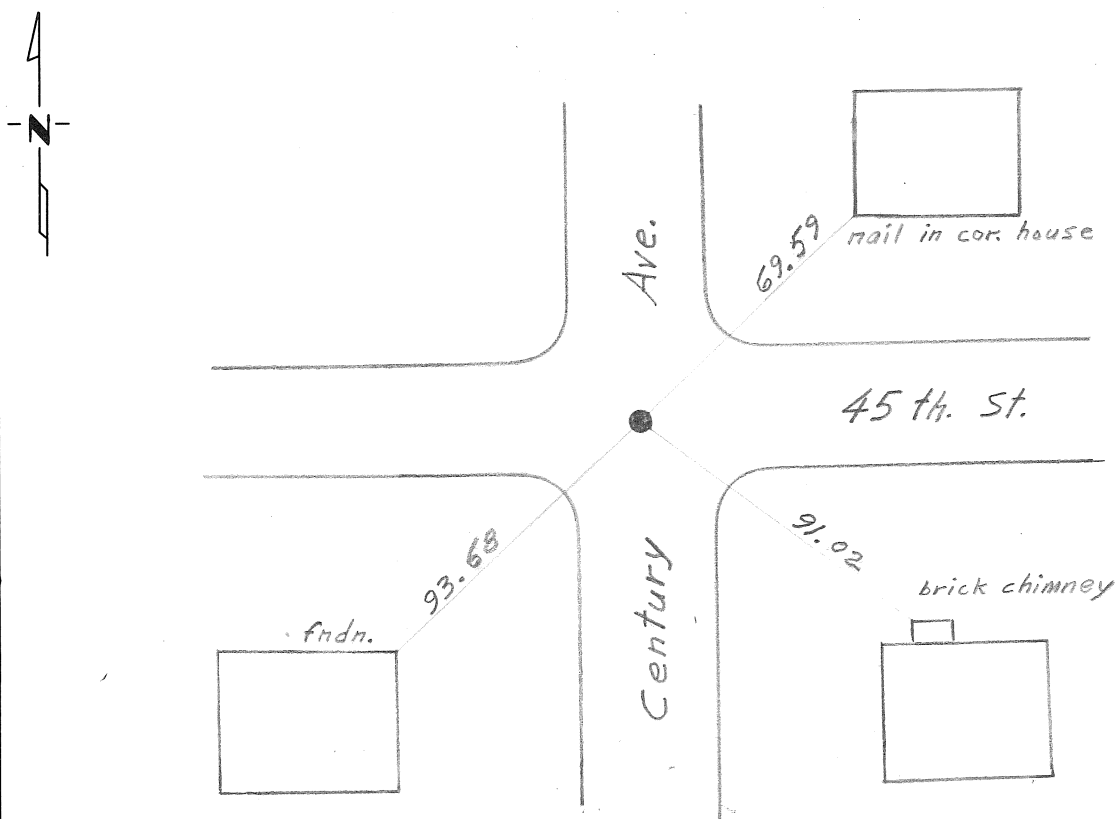
At the corner location shown on the sketch:

On Nov 7, 1974 found a 2 in. bent iron pin 9 in. below the bit.  
DATE

left monument as found,  lowered monument,  removed monument (explain)

On Nov 7, 1974 placed a 3/4 in. iron pin with a brass disc flush.  
DATE

### SKETCH OF REFERENCE TIES



Statement of evidence relative to this corner location is on back of page.

I hereby certify that this document and the data contained herein was prepared by me or under my direct supervision.

\_\_\_\_\_  
SIGNATURE DATE

Registration No. \_\_\_\_\_

- Land Surveyor,  Professional Engineer
- County Surveyor,  County Engineer

OFFICE OF THE REGISTER OF DEEDS

County of \_\_\_\_\_

I hereby certify that this document was filed in the Reg. of Deeds office at \_\_\_\_\_ M. on the \_\_\_\_\_ day of \_\_\_\_\_ A.D., 19 \_\_\_\_

Register of Deeds \_\_\_\_\_

By \_\_\_\_\_, Deputy

DOCUMENT NO. \_\_\_\_\_

Statement of Evidence: East quarter corner of section 12, T29N, R22W, 4th PM.

1847 A wood post was placed in the Public Land Survey.

1974 In November, Dave Mattson of the Minnesota Highway Department found a 2 inch iron pin 9 inches below the bituminous surface. The top of the pin was bent 0.3 foot Northwest. After digging another foot, the pin straightened and was plumb. The plumb part of the pin was then tied in both electronically and with reference ties. A 3/4 inch iron pin with a brass disc was placed flush and directly above the plumb part of the 2 inch monument. Straddle nails were placed 2.00 feet NE, SE, SW, and NW.

Statement of Evidence: East quarter corner of section 12, T29N, R22W, 4th PM.

1847 A wood post was placed in the Public Land Survey.

1974 In November, Dave Mattson of the Minnesota Highway Department found a 2 inch iron pin 9 inches below the bituminous surface. The top of the pin was bent 0.3 foot Northwest. After digging another foot, the pin straightened and was plumb. The plumb part of the pin was then tied in both electronically and with reference ties. A 3/4 inch iron pin with a brass disc was placed flush and directly above the plumb part of the 2 inch monument. Straddle nails were placed 2.00 feet NE, SE, SW, and NW.