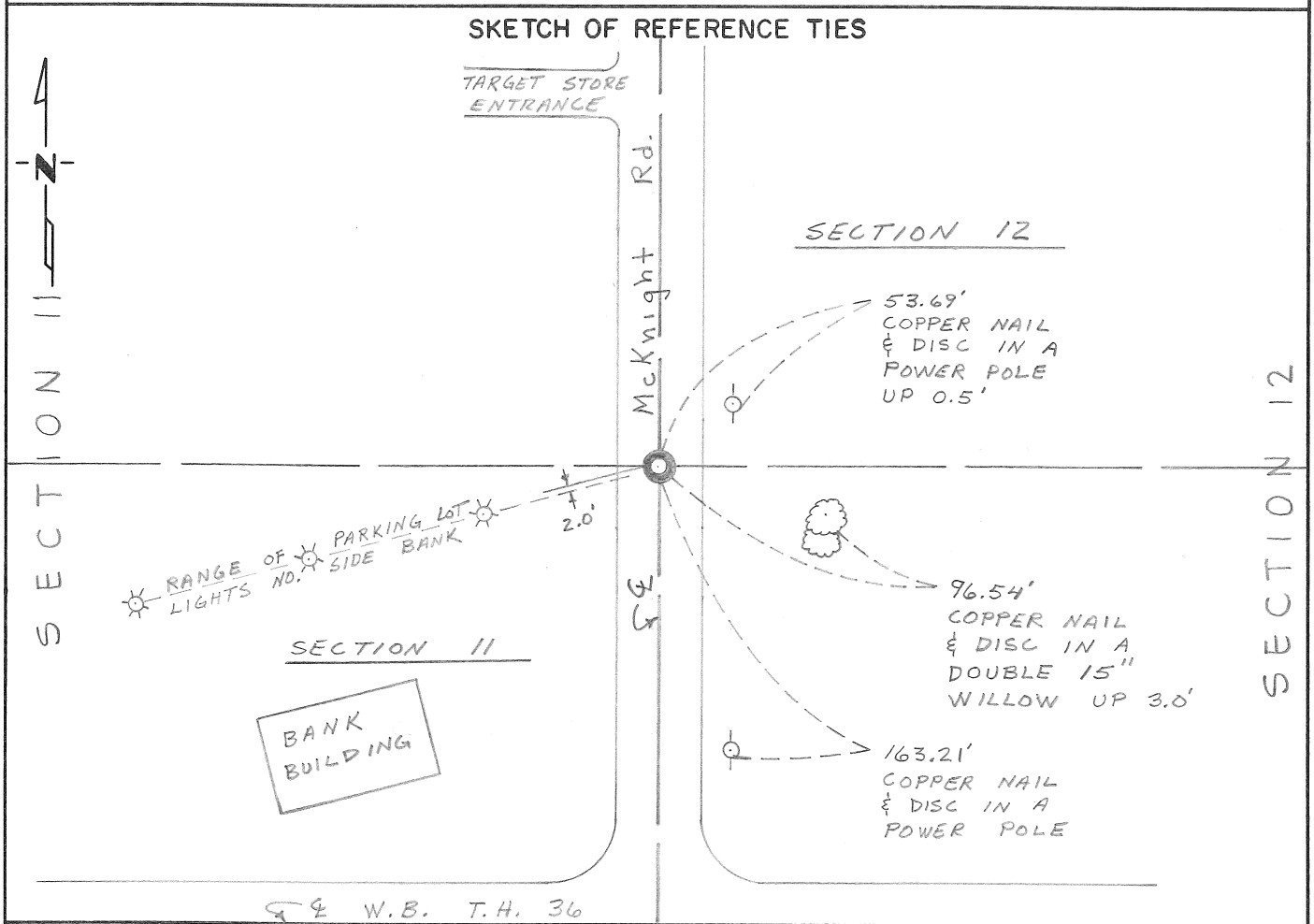


CERTIFICATE OF LOCATION OF GOVERNMENT CORNER

East Quarter _____ Corner of Section 11, Township 29N, Range 22W, 4th P.M.
STATE OF MINNESOTA, County of Ramsey

At the corner location shown on the sketch:

- On Feb. 1976 found a 1/2" Open Pipe
DATE
- left monument as found, lowered monument, removed monument (explain)
- On May 5, 1976 found ~~XXXXX~~ a Ramsey County cast iron monument, flush and set in concrete.
DATE



Statement of evidence relative to this corner location is on back of page.

I hereby certify that this document and the data contained herein was prepared by me or under my direct supervision.

W.B. T.H.
SIGNATURE _____ DATE _____

Registration No. _____
 Land Surveyor, Professional Engineer
 County Surveyor, County Engineer

OFFICE OF THE REGISTER OF DEEDS
County of _____

I hereby certify that this document was filed in the Reg. of Deeds office at _____ .M. on the _____ day of _____ A.D., 19 _____

Register of Deeds _____
By _____, Deputy
DOCUMENT NO. _____

Statement of Evidence:

East Quarter Corner Section 11, T 29N, R 22W

- 1887 Ramsey Co. records indicate a granite monument was set in 1887 by the County Surveyor & that the monument was probably destroyed in the early 1950's by sewer construction.
- 1967 Frank Kvidera set a CIM but moved it slightly in 1968.
- Jan 23, 1968 B.M. Lang (MHD) made tie from CIM to TH 36 EBL with transit and tape. He also obtained reference ties to the CIM.
- Jan 15, 1969 Ed Sands (MHD) made reference ties to a 4" iron pipe monument.
- 1972 John Turpin, RLS, recorded an iron in his RLS #263. He also noted a cast iron monument alongside his iron in 1974.
- Aug 14, 1973 Dave Pearson (MHD) found a ½" open pipe near the corner and tied it to his control traverse with T2 theodolite and H/P 3800 EDM. Subsequently, an adjusted position based on least squares adjustment dated 76/02/04 was determined for that ½" open pipe for analysis.
- Dec. 31, 1975 B.M. Lang (MHD) tied a ½" open pipe to the control traverse by EDM traverse. This pipe is not the same one as found in 1973 but matches the 1968 CIM position by 0.10'.
- 1975 Ron Meyer, Ramsey County Surveyor, determined from research and measurement with regards to the in-place iron pipe and cast iron monument that the existing iron pipe is closest to the correct position within 0.2' and not worth moving.
- April 16, 1976 Ron Meyer gave MHD qualified approval to use the iron pipe which is 1.75' west of the CIM.
- May 5, 1976 B. M. Lang made EDM tie to the recently set cast iron monument to provide clarification and to avoid possibility of incorrect position due to assumption or misunderstanding. That field work identified the in-place CIM as being in the same position as the previous 1/2" open pipe that Ron Meyer affirmed. Project coordinates for the 1976 CIM are: X = 957 590.801
Y = 72 716.406

$$X_C = 1,300,000$$

$$Y_C = 663,000$$

$$CF = 0.9999097$$

} Project Conversion Factors