

# CERTIFICATE OF LOCATION OF GOVERNMENT CORNER

EAST QUARTER Corner of Section 11, Township 29 N, Range 22 W, 4<sup>th</sup> P.M.

STATE OF MINNESOTA, County of RAMSEY

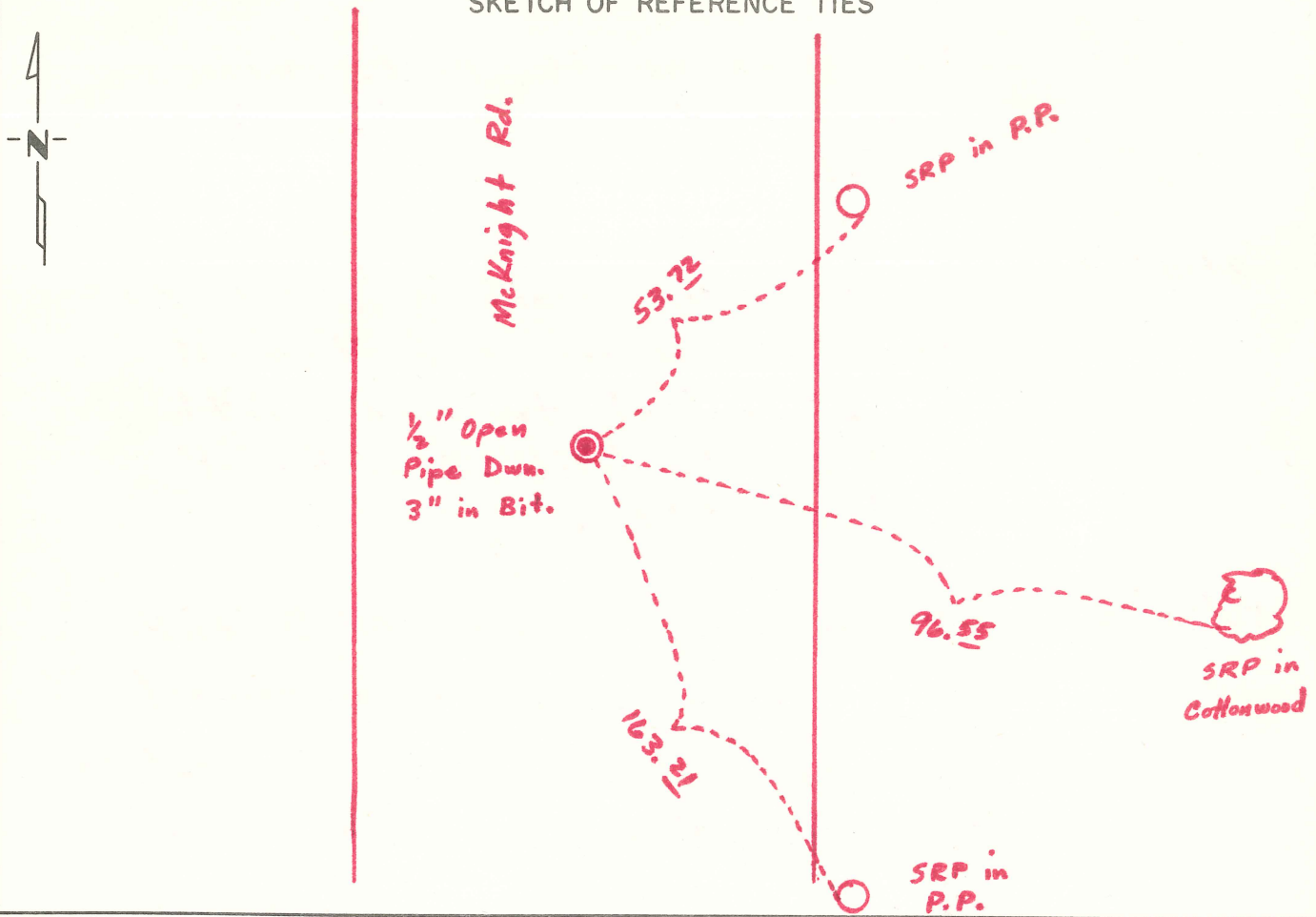
At the corner location shown on the sketch:

On Feb. 1976 found a 1/2" Open Pipe  
DATE

left monument as found,  lowered monument,  removed monument (explain)

On \_\_\_\_\_ placed a \_\_\_\_\_  
DATE

## SKETCH OF REFERENCE TIES



Statement of evidence relative to this corner location is on back of page.

I hereby certify that this document and the data contained herein was prepared by me or under my direct supervision.

\_\_\_\_\_  
SIGNATURE DATE

Registration No. \_\_\_\_\_

- Land Surveyor,  Professional Engineer
- County Surveyor,  County Engineer

## OFFICE OF THE REGISTER OF DEEDS

County of \_\_\_\_\_

I hereby certify that this document was filed in the Reg. of Deeds office at \_\_\_\_\_ .M. on the \_\_\_\_\_ day of \_\_\_\_\_ A.D., 19 \_\_\_\_\_

Register of Deeds \_\_\_\_\_

By \_\_\_\_\_, Deputy

DOCUMENT NO. \_\_\_\_\_

Statement of Evidence:

1-23-68 Bernie Lang of the M.H.D. tied in a Cast Iron Monument and made chainage reference ties to the point and also tied it to T.H.36 EBL by transit angle turned 4 times and chainage.

1-15-69 Ed Sands of the M.H.D. made reference to a 4" iron pipe at the corner.

8/14/73 Dave Pearson found a 1/2" open pipe near the corner and tied it to a control traverse with a T-2 theodolite & a Hewlett Packard EDM.

12/31/75 Bernie Lang of the MHD tied a 1/2" open pipe to a control traverse with a T-2 theodolite & a Hewlett Packard E.D.M. This pipe is not the same one as the pipe found in 1973 but matches the 1968 CIM position within 0.10 foot. The 4" Open Pipe position is computed from R/w map ties and was not measured or turned in 1969.

