

# CERTIFICATE OF LOCATION OF GOVERNMENT CORNER

MEANDER CORNER #6

(S. SIDE OF SILVER LAKE) Corner of Section 1, Township 29N, Range 22W, 4th P.M.

STATE OF MINNESOTA, County of RAMSEY & WASHINGTON

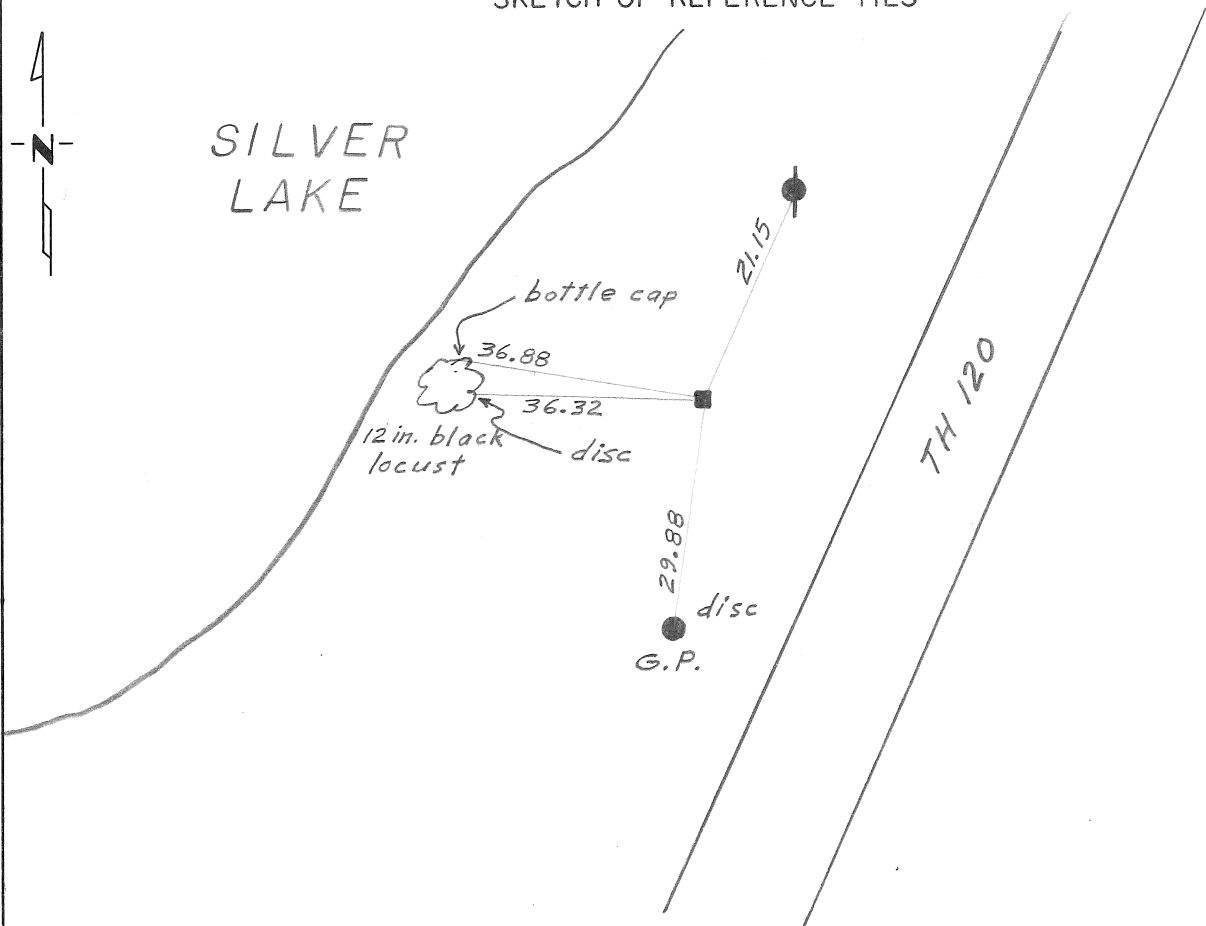
At the corner location shown on the sketch:

On MAY 23, 1974 found a 8 in. square granite monument flush.  
DATE

left monument as found,  lowered monument,  removed monument (explain)

On \_\_\_\_\_ placed a \_\_\_\_\_  
DATE

SKETCH OF REFERENCE TIES



Statement of evidence relative to this corner location is on back of page.

I hereby certify that this document and the data contained herein was prepared by me or under my direct supervision.

Donald H. Campbell 1 Aug 74  
SIGNATURE DATE

Registration No. 5712

Land Surveyor,  Professional Engineer

County Surveyor,  County Engineer

OFFICE OF THE REGISTER OF DEEDS

County of \_\_\_\_\_

I hereby certify that this document was filed in the Reg. of Deeds office at \_\_\_\_\_ .M. on the \_\_\_\_\_ day of \_\_\_\_\_ A.D., 19 \_\_\_\_

Register of Deeds \_\_\_\_\_

By \_\_\_\_\_, Deputy

DOCUMENT NO. \_\_\_\_\_