

# CERTIFICATE OF LOCATION OF GOVERNMENT CORNER

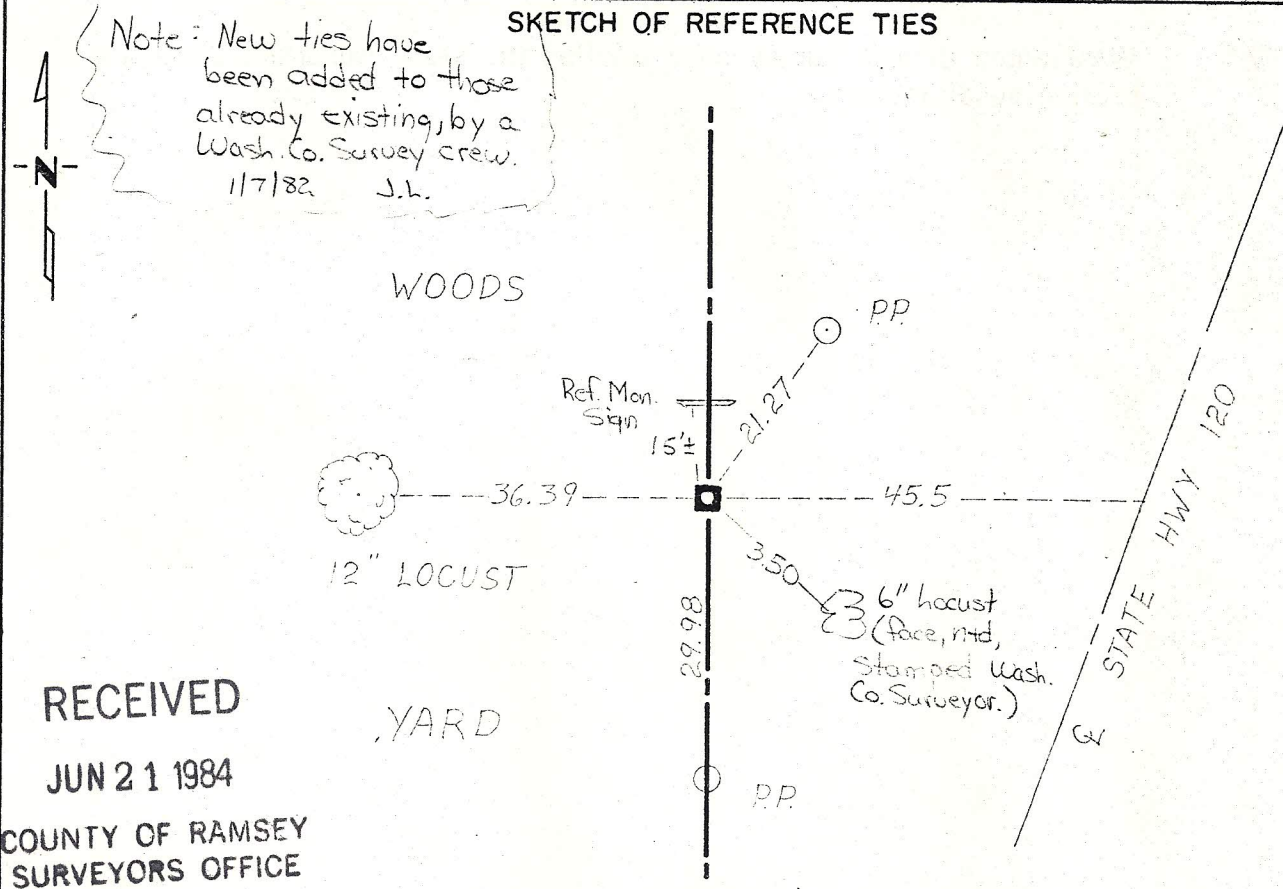
Meander cor. No. 21  
(So. side of Silver Lake) Corner of Section 6, Township 29, Range 21, 4th P.M.

STATE OF MINNESOTA, County of Washington

At the corner location shown on the sketch:

- On 1-25-73 found a 6" x 6" stone monument (Granite)  
DATE
- left monument as found,  lowered monument,  removed monument (explain)
- On \_\_\_\_\_ placed a \_\_\_\_\_  
DATE

### SKETCH OF REFERENCE TIES



RECEIVED

JUN 21 1984

COUNTY OF RAMSEY  
SURVEYORS OFFICE

Stone is down 0.4'  
TIES HAVE NAILS & DISCS STAMPED 5333

Statement of evidence relative to this corner location is on back of page.

I hereby certify that this document and the data contained herein was prepared by me or under my direct supervision.

Paul G. Johnson 6/6/76  
SIGNATURE DATE

Registration No. 10938

Land Surveyor,  Professional Engineer

County Surveyor,  County Engineer

OFFICE OF THE REGISTER OF DEEDS

County of \_\_\_\_\_

I hereby certify that this document was filed in the Reg. of Deeds office at \_\_\_\_\_ .M. on the \_\_\_\_\_ day of \_\_\_\_\_ A.D., 19 \_\_\_\_\_

Register of Deeds \_\_\_\_\_

By \_\_\_\_\_, Deputy

DOCUMENT NO. \_\_\_\_\_

MF 807 1984

Statement of Evidence:

- 1847 Government surveyors set meander post on south side of Lake and marked two bearing trees:  
Birch 6" N 40° E 12  
W. Oak 10" S 50° W 15
- 1902 A granite monument was placed in the Ramsey County re-survey.
- 1923 June 1, Survey No. 394 by L.W. Clarke shows a granite monument on the section line 2061.2' north of SW corner Section 6.
- 1973 Washington County survey crew found from Ramsey County ties a stone monument and tied same stone out.
- 1974 Washington County Survey crew verified the stone monument through section subdivision.

RECEIVED  
JUN 21 1974  
COUNTY OF RAMSEY  
SURVEYORS OFFICE