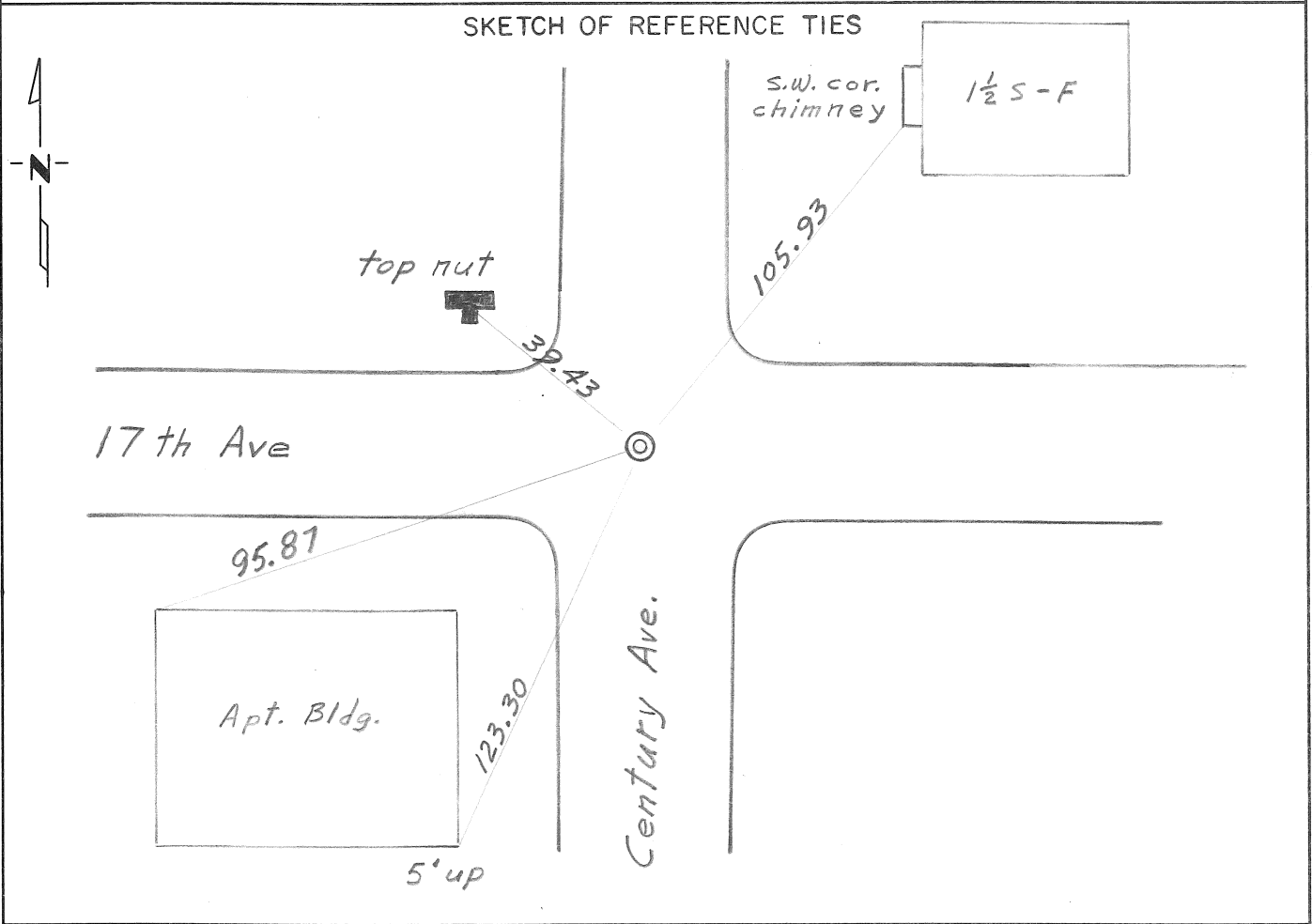


CERTIFICATE OF LOCATION OF GOVERNMENT CORNER

NORTHEAST Corner of Section 12, Township 29, Range 22, 4th P.M.
 STATE OF MINNESOTA, County of RAMSEY & WASHINGTON

At the corner location shown on the sketch:

- On MAY 23, '74 found a 2 in. open pipe set in concrete 0.2ft. down
DATE
- left monument as found, lowered monument, removed monument (explain)
- On MAY 23, '74 placed a 3/4 in. iron pin with MHD cap flush. Set PK nails
DATE
2 ft. SW, NW, NE, and SE.



Statement of evidence relative to this corner location is on back of page.

I hereby certify that this document and the data contained herein was prepared by me or under my direct supervision.

Donald H. Campbell 1 Aug 74
SIGNATURE DATE

Registration No. 5712

- Land Surveyor, Professional Engineer
- County Surveyor, County Engineer

OFFICE OF THE REGISTER OF DEEDS

County of _____

I hereby certify that this document was filed in the Reg. of Deeds office at _____ .M. on the _____ day of _____ A.D., 19 ____

Register of Deeds _____

By _____, Deputy

DOCUMENT NO. _____