

CERTIFICATE OF LOCATION OF GOVERNMENT CORNER

NORTH QUARTER Corner of Section 11, Township 29N, Range 22W, 4th P.M.

STATE OF MINNESOTA, County of RAMSEY

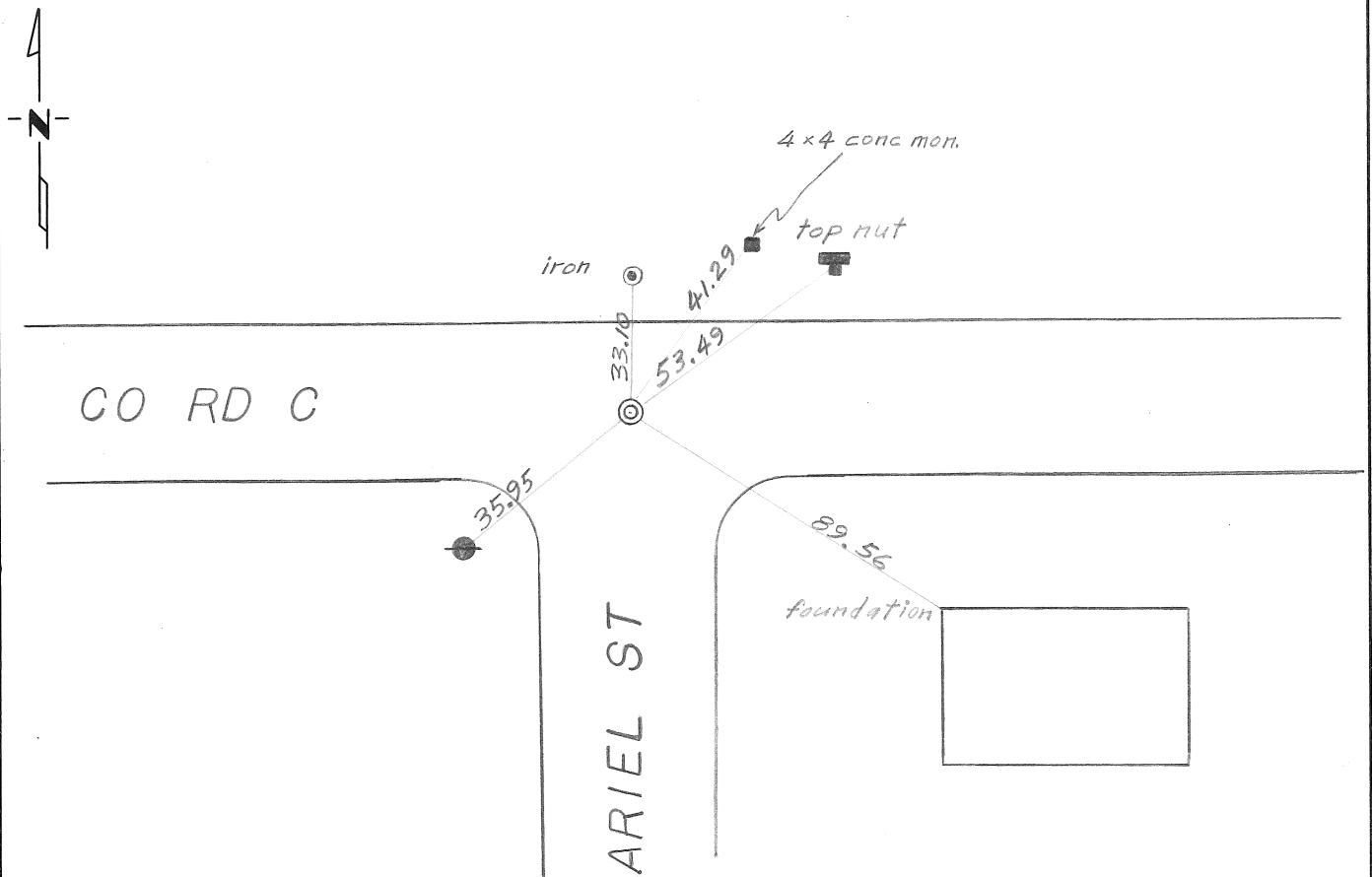
At the corner location shown on the sketch:

On MAY 24, 1974 found a 3/4 in. iron pipe flush.
DATE

left monument as found, lowered monument, removed monument (explain)
(see back side)

On _____ placed a _____
DATE

SKETCH OF REFERENCE TIES



Statement of evidence relative to this corner location is on back of page.

I hereby certify that this document and the data contained herein was prepared by me or under my direct supervision.

Donald H. Campbell 1 Aug 74
SIGNATURE DATE

Registration No. 5712

Land Surveyor, Professional Engineer

County Surveyor, County Engineer

OFFICE OF THE REGISTER OF DEEDS

County of _____

I hereby certify that this document was filed in the Reg. of Deeds office at _____ .M. on the _____ day of _____ A.D., 19 ____

Register of Deeds _____

By _____, Deputy

DOCUMENT NO. _____

Statement of Evidence: NORTH QUARTER CORNER OF SECTION 11, T29N, R22W, 4th PM

- 1847 A wood post was placed in the Public Land Survey.
- 1902 A granite monument was placed in the Ramsey County re-survey.
- 1974 On May 24, 1974 Keith VanWagner found a $\frac{3}{4}$ in. iron pipe flush. He removed the pipe and found an 8 in. square granite monument down 0.6 ft. directly beneath the iron pipe. He placed a $\frac{3}{4}$ in. iron pin with a Minnesota Highway Department cap flush and set P.K. straddle nails 2 ft SW, NW, NE, and SE.