

CERTIFICATE OF LOCATION OF GOVERNMENT CORNER

NORTHEAST Corner of Section 10, Township 29N, Range 22W, 4th P.M.

STATE OF MINNESOTA, County of RAMSEY

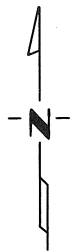
At the corner location shown on the sketch:

On MAY 28, 1974 found a cast iron witness monument 33.00 ft so. of the corner
DATE and a cast iron mon. 33.00 ft east of the corner.

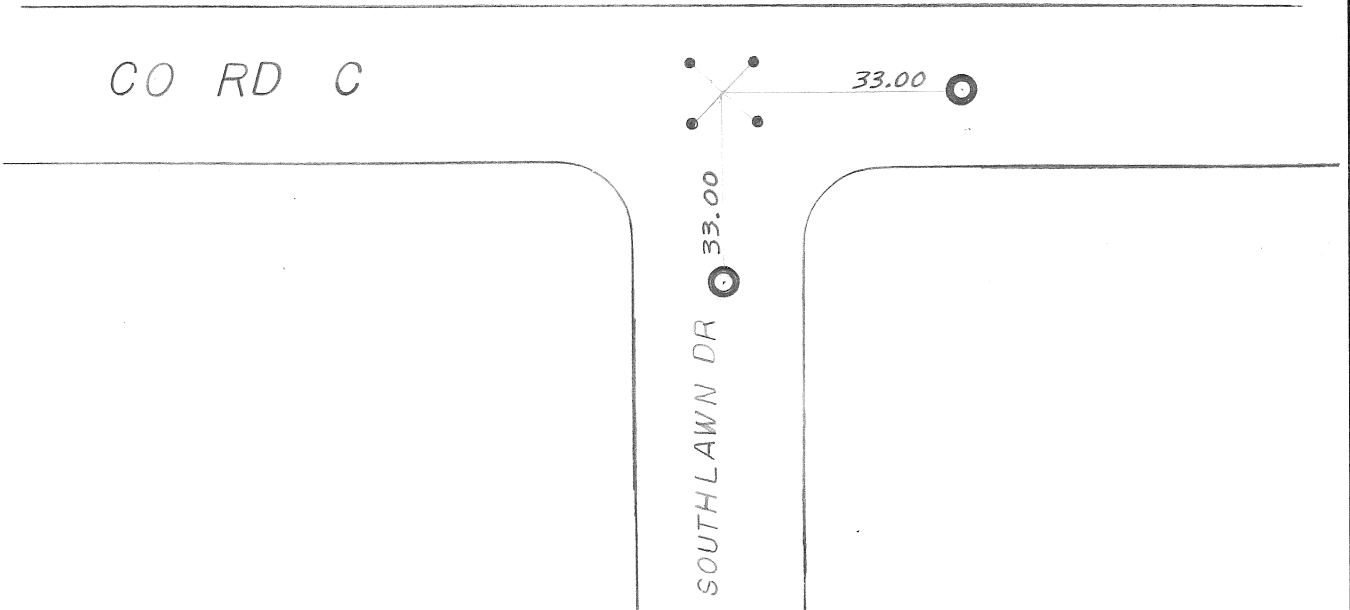
left monument as found, lowered monument, removed monument (explain)

On _____ placed a _____
DATE

SKETCH OF REFERENCE TIES



*Corner falls on M.H.
 P.K. straddle nails 2.00 ft SW, NW, NE & SE.*



Statement of evidence relative to this corner location is on back of page.

I hereby certify that this document and the data contained herein was prepared by me or under my direct supervision.

Donald H. Campbell 1 Aug 74
SIGNATURE DATE

Registration No. 5712

Land Surveyor, Professional Engineer

County Surveyor, County Engineer

OFFICE OF THE REGISTER OF DEEDS

County of _____

I hereby certify that this document was filed in the Reg. of Deeds office at _____ .M. on the _____ day of _____ A.D., 19 ____

Register of Deeds _____

By _____, Deputy

DOCUMENT NO. _____

Statement of Evidence: NORTHEAST CORNER OF SECTION 10, T29N,R22W, 4th PM

- 1847 A wood post was placed in the Public Land Survey.
- 1902 A granite monument was placed in the Ramsey County re-survey.
- 19 ? The monument was destroyed by sewer construction.