

CERTIFICATE OF LOCATION OF GOVERNMENT CORNER

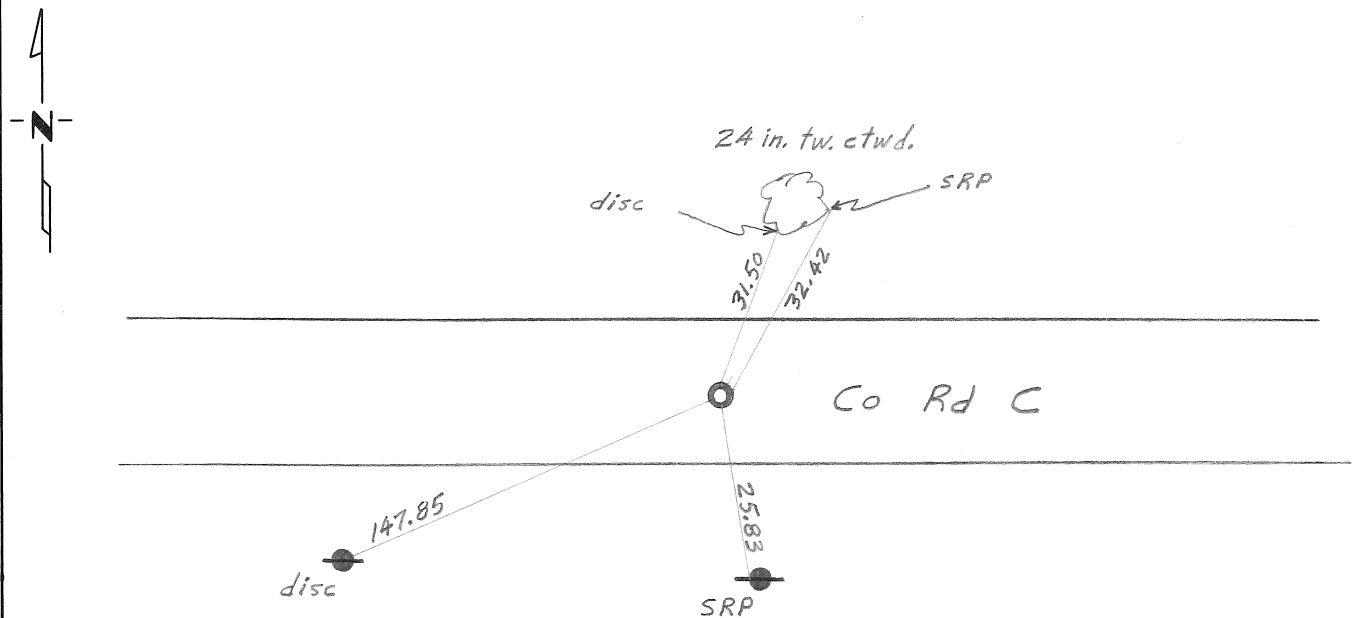
NORTH QUARTER Corner of Section 9, Township 29N, Range 22W, 4th P.M.

STATE OF MINNESOTA, County of RAMSEY

At the corner location shown on the sketch:

- On _____ found a cast iron monument flush.
DATE
- left monument as found, lowered monument, removed monument (explain)
- On _____ placed a _____
DATE

SKETCH OF REFERENCE TIES



Statement of evidence relative to this corner location is on back of page.

I hereby certify that this document and the data contained herein was prepared by me or under my direct supervision.

Donald H. Campbell 1 Aug 74
SIGNATURE DATE

Registration No. 5712

- Land Surveyor, Professional Engineer
- County Surveyor, County Engineer

OFFICE OF THE REGISTER OF DEEDS

County of _____

I hereby certify that this document was filed in the Reg. of Deeds office at _____ .M. on the _____ day of _____ A.D., 19 ____

Register of Deeds _____

By _____, Deputy

DOCUMENT NO. _____