

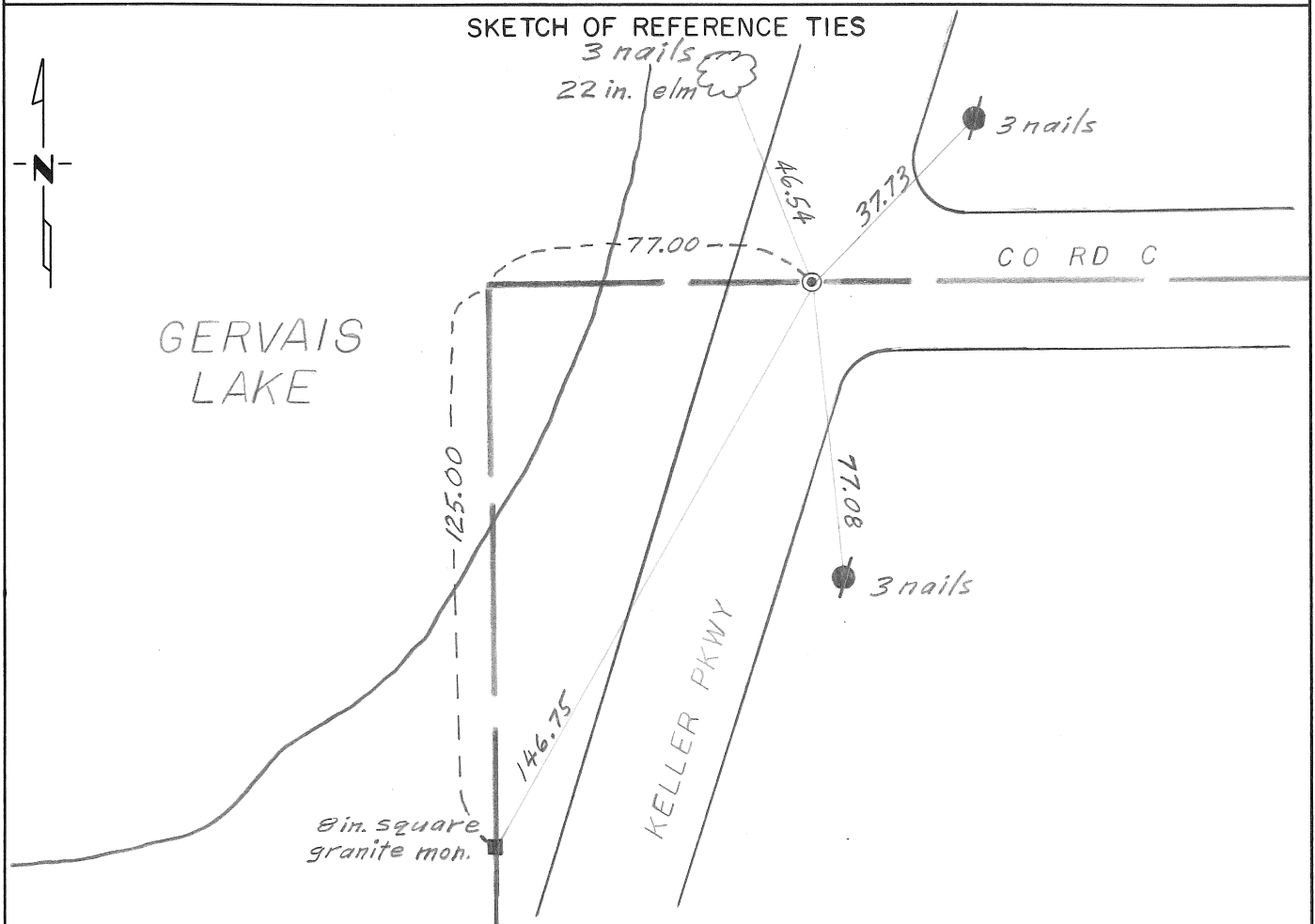
CERTIFICATE OF LOCATION OF GOVERNMENT CORNER

NORTHEAST Corner of Section 8, Township 29N, Range 22W, 4th P.M.

STATE OF MINNESOTA, County of RAMSEY

At the corner location shown on the sketch:

- On June 3, 1974 found a boat spk. 0.2ft down, and an 8 in. square granite monument flush.
DATE
- left monument as found,
 lowered monument,
 removed monument (explain)
- On _____ placed a _____
DATE



Statement of evidence relative to this corner location is on back of page.

I hereby certify that this document and the data contained herein was prepared by me or under my direct supervision.

Donald A. Campbell 1 Aug 79
SIGNATURE DATE

Registration No. 5712

- Land Surveyor, Professional Engineer
- County Surveyor, County Engineer

OFFICE OF THE REGISTER OF DEEDS

County of _____

I hereby certify that this document was filed in the Reg. of Deeds office at _____ .M. on the _____ day of _____ A.D., 19 _____

Register of Deeds _____

By _____, Deputy

DOCUMENT NO. _____

Statement of Evidence: NORTHEAST CORNER OF SECTION 8, T29N, R22W, 4thPM

- 1847 A wood post was placed in the Public Land Survey.
- 1902 Meander corners were placed 70 ft east and 125 ft south of the corner in the Ramsey County re-survey.
- 1974 On June 3, 1974 a boat spike was found by David F. Mattson of the Minnesota Highway Department. The boat spike was considered to be 77.00ft east of the section corner and on the section line. This information was obtained from the Ramsey County Engineer's office on Rice Street and I694.