

# CERTIFICATE OF LOCATION OF GOVERNMENT CORNER

EAST QUARTER Corner of Section 3, Township 29N, Range 22W, 4th P.M.

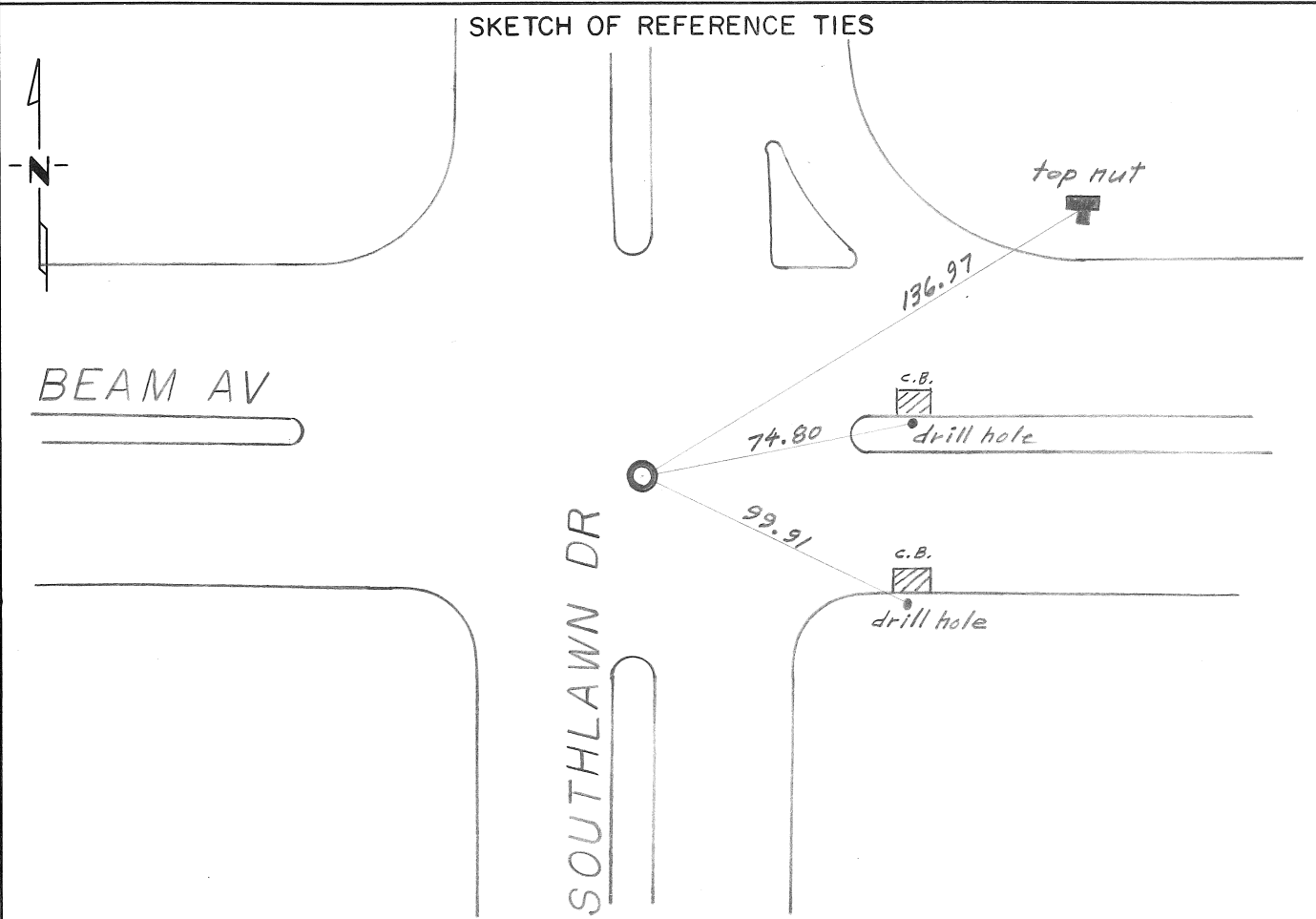
STATE OF MINNESOTA, County of RAMSEY

At the corner location shown on the sketch:

On MAY 28, 1974 found a cast iron monument flush  
DATE

left monument as found,  lowered monument,  removed monument (explain)

On \_\_\_\_\_ placed a \_\_\_\_\_  
DATE



Statement of evidence relative to this corner location is on back of page.

I hereby certify that this document and the data contained herein was prepared by me or under my direct supervision.

Donald H. Campbell / Aug 74  
SIGNATURE DATE

Registration No. 5712

Land Surveyor,  Professional Engineer

County Surveyor,  County Engineer

OFFICE OF THE REGISTER OF DEEDS

County of \_\_\_\_\_

I hereby certify that this document was filed in the Reg. of Deeds office at \_\_\_\_\_ .M. on the \_\_\_\_\_ day of \_\_\_\_\_ A.D., 19 \_\_\_\_

Register of Deeds \_\_\_\_\_

By \_\_\_\_\_, Deputy

DOCUMENT NO. \_\_\_\_\_