

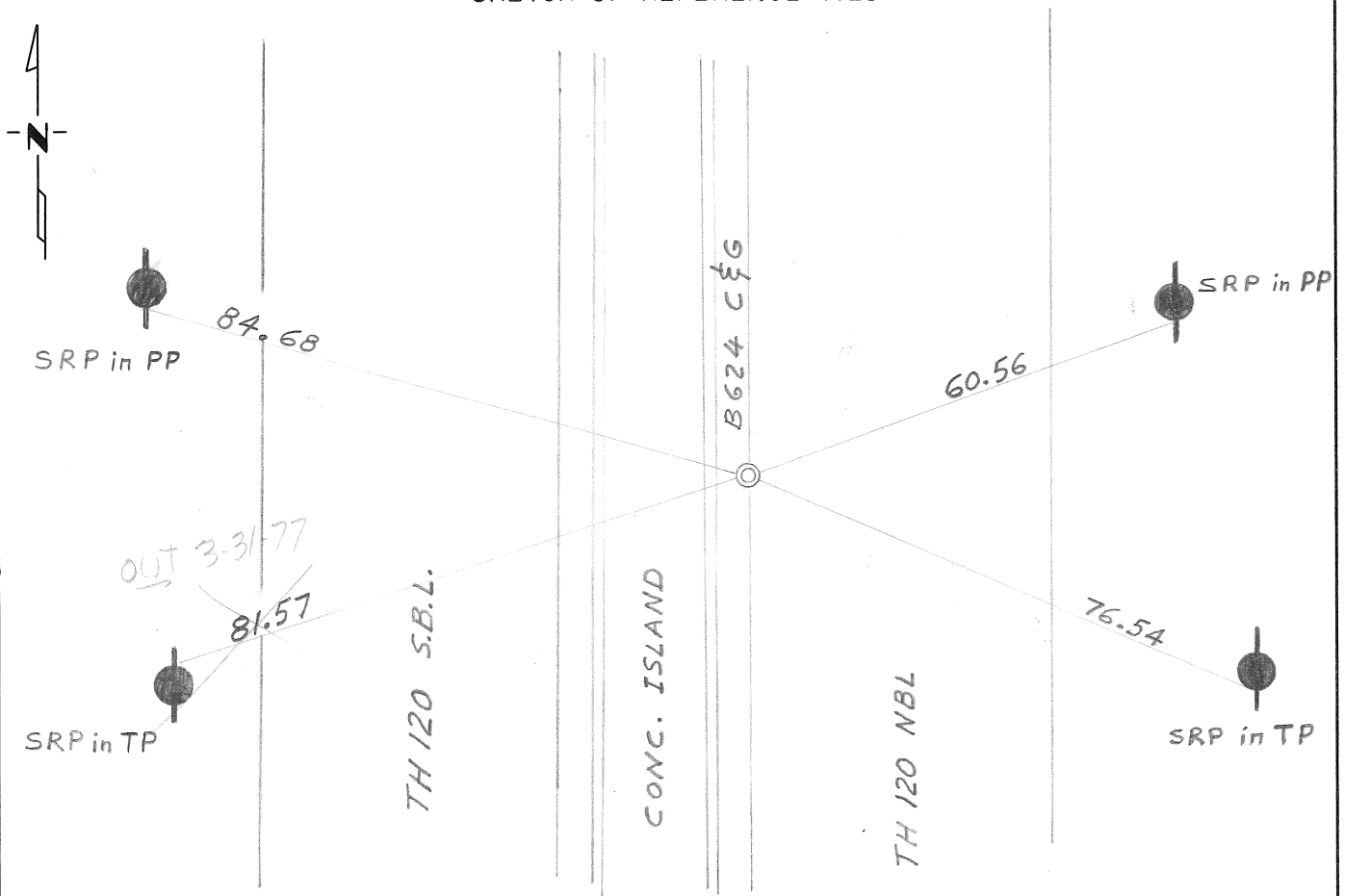
CERTIFICATE OF LOCATION OF GOVERNMENT CORNER

NORTHEAST Corner of Section 1, Township 29, Range 22, 4th P.M.
 STATE OF MINNESOTA, County of RAMSEY & WASHINGTON

At the corner location shown on the sketch:

- On MAY 15, 1974 found a 3/4 in. drill hole in concrete gutter near the toe of the gutter.
DATE
- left monument as found, lowered monument, removed monument (explain)
- On MAY 15, 1974 placed a 3/4 in. iron pin with MHD cap flush.
DATE

SKETCH OF REFERENCE TIES



Statement of evidence relative to this corner location is on back of page.

I hereby certify that this document and the data contained herein was prepared by me or under my direct supervision.

Donald H. Campbell 1 Aug 74
SIGNATURE DATE

Registration No. 5712

- Land Surveyor, Professional Engineer
- County Surveyor, County Engineer

OFFICE OF THE REGISTER OF DEEDS

County of _____

I hereby certify that this document was filed in the Reg. of Deeds office at _____ .M. on the _____ day of _____ A.D., 19 ____

Register of Deeds _____

By _____, Deputy

DOCUMENT NO. _____

Statement of Evidence:

NORTHEAST CORNER OF SECTION 1, T29N, R22W, 4th P.M.

1847

A wood post was placed in the Public Land Survey.

1902

A granite monument was placed in the Ramsey County re-survey.

1974

The origin of the $\frac{3}{4}$ in. drill hole is unknown. However, its location was found to be compatible with a Minn. Hwy. Dept. land tie to I 694 done in 1967. At that time there was a 4 in. brass disc stamped "CITY MON".