

# CERTIFICATE OF LOCATION OF GOVERNMENT CORNER

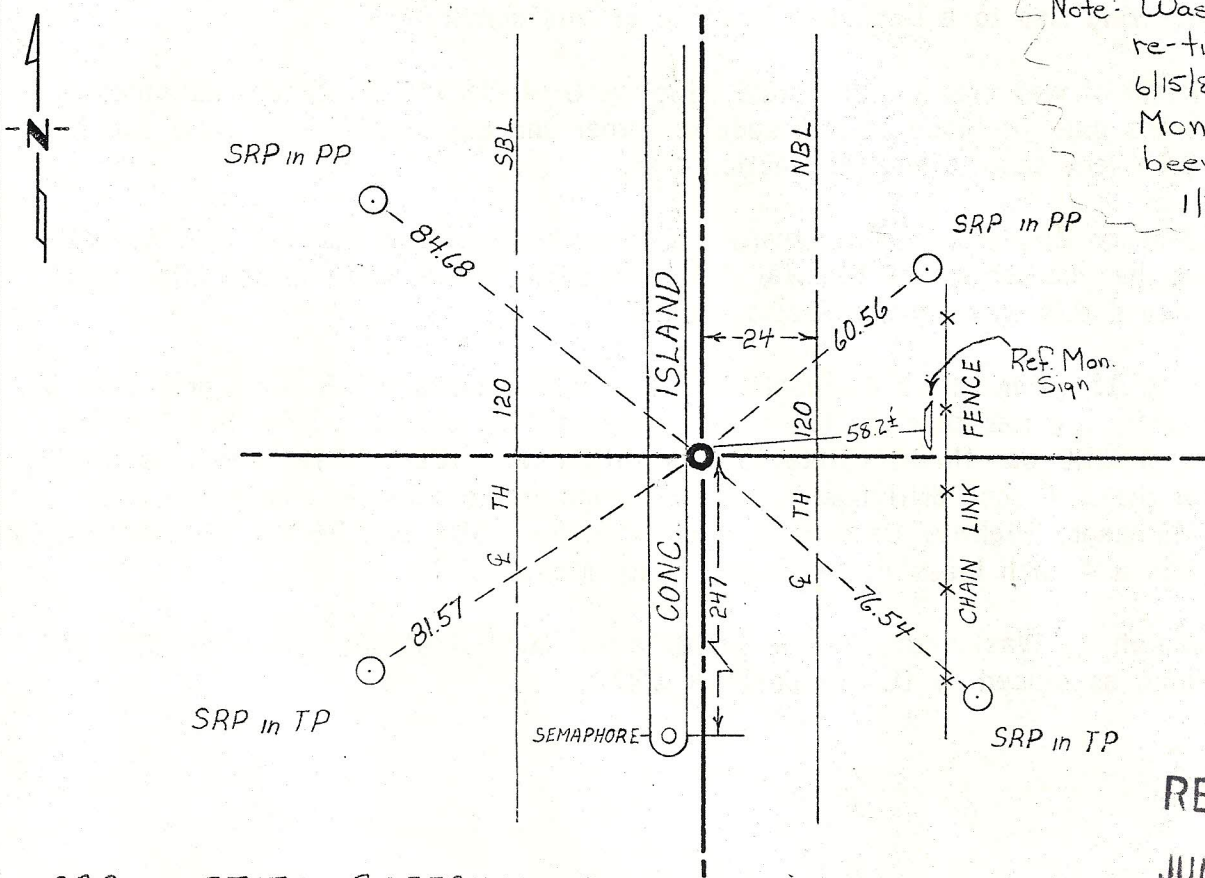
NW Corner of Section 6, Township 29, Range 21, 4th P.M.

STATE OF MINNESOTA, County of Washington

At the corner location shown on the sketch:

- On 3-04-77 found a 3/4" iron pin with MHD cap flush.  
DATE
- left monument as found,  lowered monument,  removed monument (explain)
- On \_\_\_\_\_ placed a \_\_\_\_\_  
DATE

### SKETCH OF REFERENCE TIES



SRP = STATE REFERENCE POINT  
TIES ARE COPIED FROM M.H.D. CERTIFICATE OF LOCATION

RECEIVED

JUN 21 1984

OFFICE OF RAMSEY SURVEYORS OFFICE

Statement of evidence relative to this corner location is on back of page.

I hereby certify that this document and the data contained herein was prepared by me or under my direct supervision.

Paul A. Johnson 4/8/77  
SIGNATURE DATE

Registration No. 10938

- Land Surveyor,  Professional Engineer
- County Surveyor,  County Engineer

OFFICE OF THE REGISTER OF DEEDS

County of \_\_\_\_\_

I hereby certify that this document was filed in the Reg. of Deeds office at \_\_\_\_\_ M. on the \_\_\_\_\_ day of \_\_\_\_\_ A.D., 19 \_\_\_\_\_

Register of Deeds \_\_\_\_\_

By \_\_\_\_\_, Deputy

DOCUMENT NO. \_\_\_\_\_

MF  
FEB 27 1984

Statement of Evidence:

Section corner common to Section 6, T29 R21; Section 31, T30 R21;  
Section 1, T29 R22 and Section 36, T30 R22.

- 1847 Original government surveyors set post for T29 & 30 - R21 & 22 and recorded two bearing trees at township corner;  
B. Oak 6" S 22<sup>0</sup> E 45 links  
B. Oak 10" S 54<sup>0</sup> W 61 links
- 1902 A granite monument was placed in Ramsey County re-survey.
- 1908 February 19, John B. Irvine, Ramsey County Surveyor, furnished sketch showing ties to a monument in place at this corner.
- 1963 Right of way map for Interstate Highway 694=393 S.P. 8286 indicates a brass plug in place at this section corner and the centerline of ramp two is 243 feet south along the section line.
- 1973 January 26, Washington County survey crew found and tied out a P.K. nail at the intersection of Highway 120 and 60th Street North (Later information proved this was not the section corner).
- 1974 May 15, Donald H. Campbell R.L.S. 5712 found a 3/4 inch drill hole in concrete gutter near the toe of the gutter and he placed a 3/4 inch iron pin with MHD cap flush. (State Highway Index No. 503A). He noted the origin of the 3/4 inch drill hole is unknown, but its location is compatible with Minnesota Highway Department work done for I 694 in 1967. At that time there was a 4 inch brass disc stamped "City Mon.".
- 1977 March 4, Washington County survey crew found 3/4" iron pin with MHD cap flush as placed by D. Campbell in 1974.

RECEIVED

NOV 1977