

CERTIFICATE OF LOCATION OF GOVERNMENT CORNER

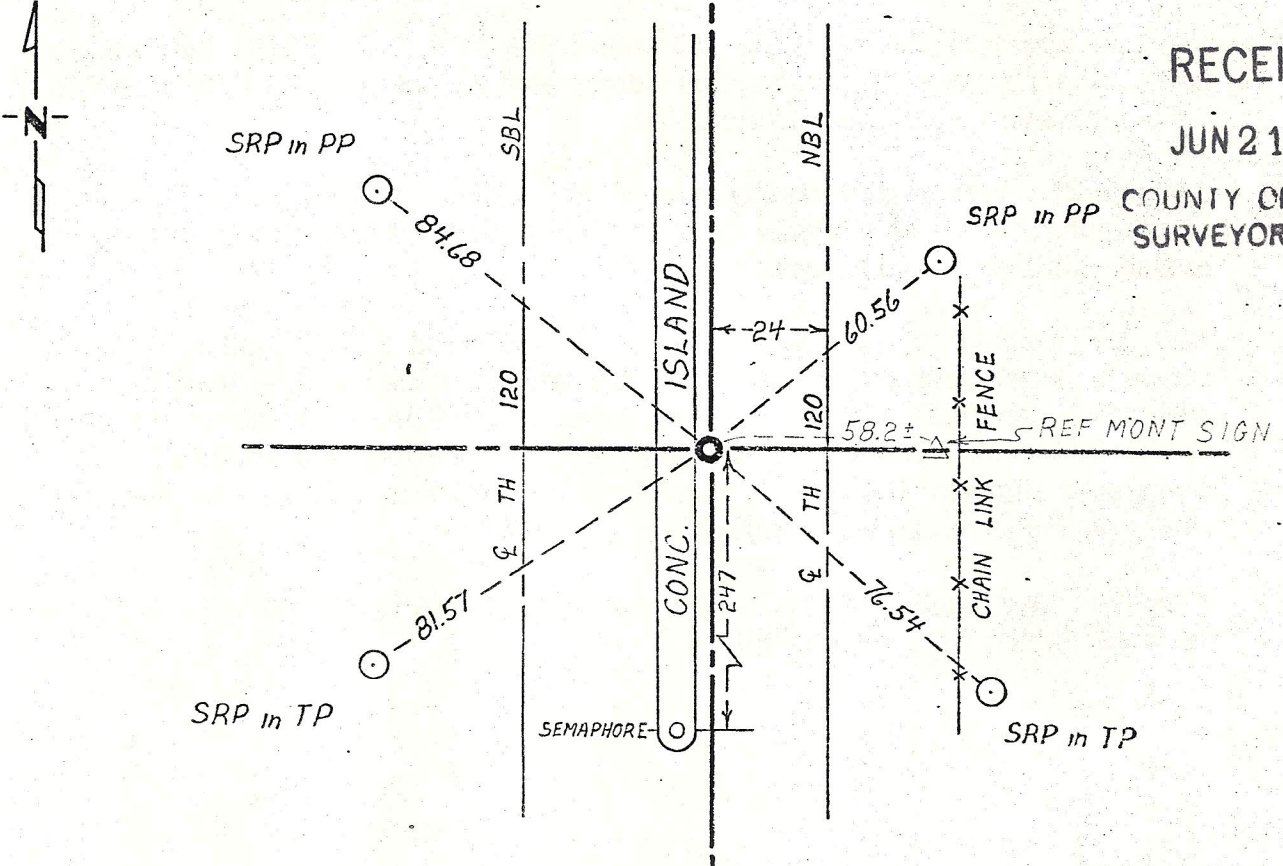
~~NW~~ SW Corner of Section 31, Township 29 30, Range 21, 4th P.M.

STATE OF MINNESOTA, County of Washington

At the corner location shown on the sketch:

- On 3-04-77 found a 3/4" iron pin with MHD cap flush.
DATE
- left monument as found, lowered monument, removed monument (explain)
- On _____ placed a _____
DATE

TIES REVISED 6-15-81 PRJ SKETCH OF REFERENCE TIES



RECEIVED

JUN 21 1984

COUNTY OF RAMSEY SURVEYORS OFFICE

SRP = STATE REFERENCE POINT
TIES ARE COPIED FROM M.H.D. CERTIFICATE OF LOCATION

Statement of evidence relative to this corner location is on back of page.

I hereby certify that this document and the data contained herein was prepared by me or under my direct supervision.

Paul A. Johnson 4/8/77
SIGNATURE . DATE

Registration No. 10938

- Land Surveyor, Professional Engineer
- County Surveyor, County Engineer

OFFICE OF THE REGISTER OF DEEDS
County of _____

I hereby certify that this document was filed in the Reg. of Deeds office at _____ .M. on the _____ day of _____ A.D., 19 _____

Register of Deeds _____
By _____, Deputy

DOCUMENT NO. _____

Statement of Evidence:

Section corner common to Section 6, T29 R21; Section 31, T30 R21;
Section 1, T29 R22 and Section 36, T30 R22.

- 1847 Original government surveyors set post for T29 & 30 - R21 & 22 and recorded two bearing trees at township corner;
B. Oak 6" S 22° E 45 links
B. Oak 10" S 54° W 61 links
- 1902 A granite monument was placed in Ramsey County re-survey.
- 1908 February 19, John B. Irvine, Ramsey County Surveyor, furnished sketch showing ties to a monument in place at this corner.
- 1963 Right of way map for Interstate Highway 694=393 S.P. 8286 indicates a brass plug in place at this section corner and the centerline of ramp two is 243 feet south along the section line.
- 1973 January 26, Washington County survey crew found and tied out a P.K. nail at the intersection of Highway 120 and 60th Street North (Later information proved this was not the section corner).
- 1974 May 15, Donald H. Campbell R.L.S. 5712 found a 3/4 inch drill hole in concrete gutter near the toe of the gutter and he placed a 3/4 inch iron pin with MHD cap flush. (State Highway Index No. 503A). He noted the origin of the 3/4 inch drill hole is unknown, but its location is compatible with Minnesota Highway Department work done for I 694 in 1967. At that time there was a 4 inch brass disc stamped "City Mon.".
- 1977 March 4, Washington County survey crew found 3/4" iron pin with MHD cap flush as placed by D. Campbell in 1974.