

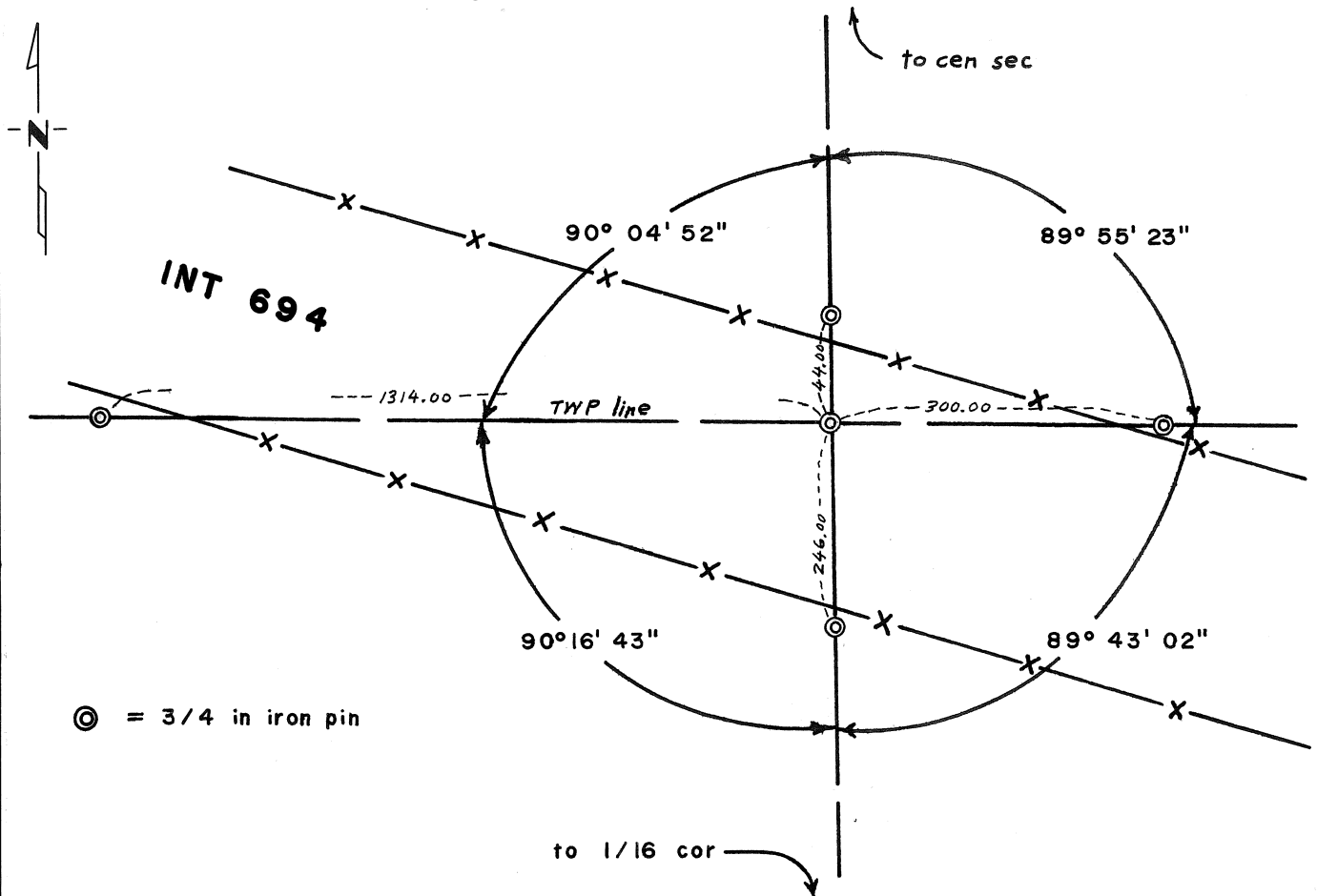
# CERTIFICATE OF LOCATION OF GOVERNMENT CORNER

North Quarter Corner of Section 1, Township 29N, Range 22W, 4th P.M.  
 STATE OF MINNESOTA, County of Ramsey

At the corner location shown on the sketch:

- On MAY 8, 1974 found a 3/4 inch iron pin  
DATE
- left monument as found,  lowered monument,  removed monument (explain)
- On \_\_\_\_\_ placed a \_\_\_\_\_  
DATE

SKETCH OF REFERENCE TIES



Statement of evidence relative to this corner location is on back of page.

I hereby certify that this document and the data contained herein was prepared by me or under my direct supervision.

Donald H. Campbell 1 Aug 74  
SIGNATURE DATE

Registration No. 5712

- Land Surveyor,  Professional Engineer
- County Surveyor,  County Engineer

OFFICE OF THE REGISTER OF DEEDS

County of \_\_\_\_\_

I hereby certify that this document was filed in the Reg. of Deeds office at \_\_\_\_\_ .M. on the \_\_\_\_\_ day of \_\_\_\_\_ A.D., 19 \_\_\_\_

Register of Deeds \_\_\_\_\_

By \_\_\_\_\_, Deputy

DOCUMENT NO. \_\_\_\_\_

Statement of Evidence:

NORTH QUARTER CORNER OF SECTION 1, T29N, R22W, 4th P.M.

1847 A wood post was placed in the original Public Land Survey.

1902 A granite monument was placed in the Ramsey County re-survey.

1970 The  $\frac{3}{4}$  in. iron pin was placed by David F. Mattson of the Minn. Hwy. Dept. in Aug. 1970. It is in the same place as an 8 in. granite monument was prior to the construction of Interstate 694. The iron pin was set with the same ties that were used to tie in the granite monument.

This corner has been tied in to a Minn. Hwy. Dept. coordinate system. The coordinates are available in the Dist. 9 surveys office in Oakdale.