

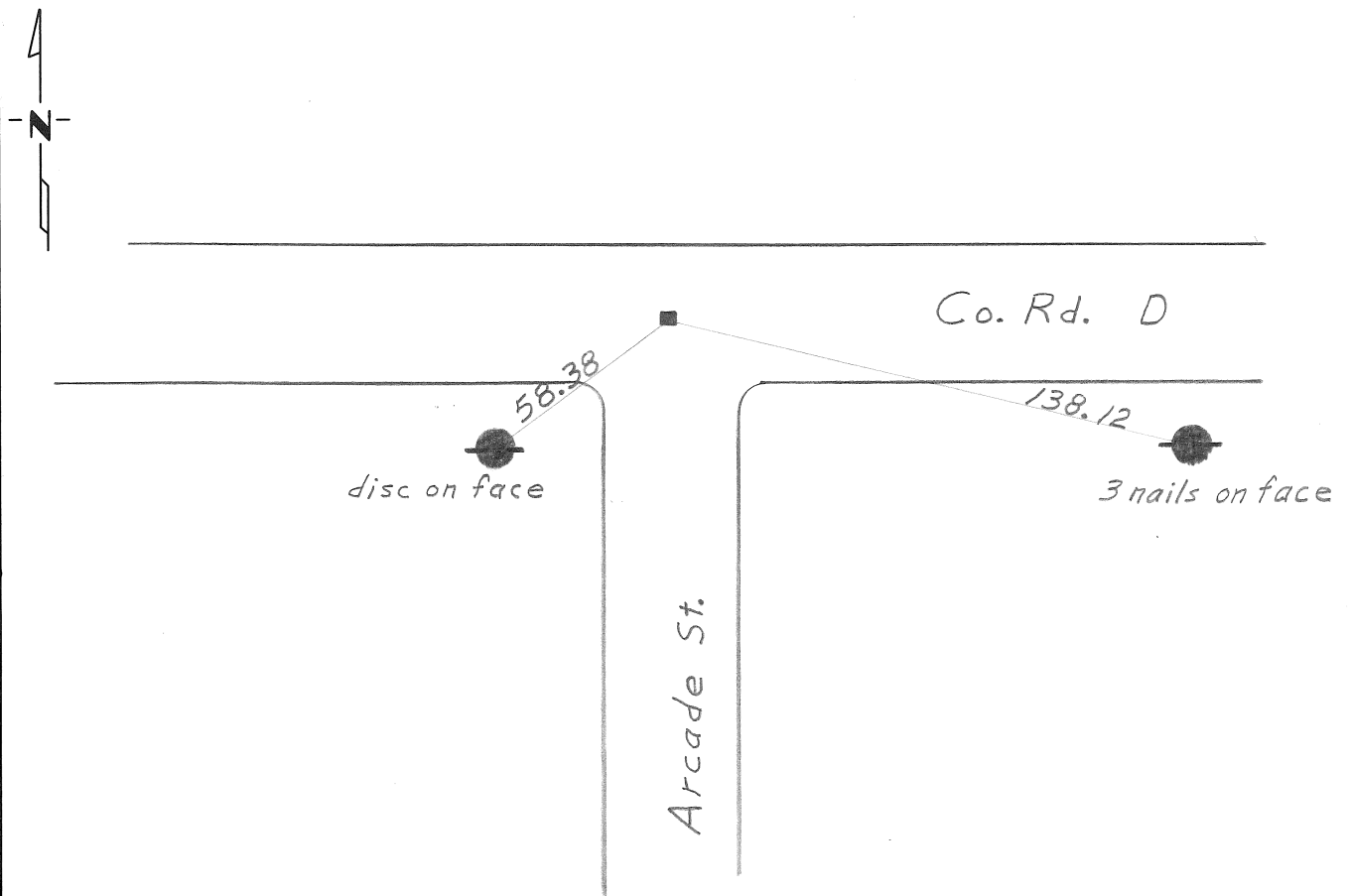
CERTIFICATE OF LOCATION OF GOVERNMENT CORNER

NORTHEAST Corner of Section 5, Township 29N, Range 22W, 4th P.M.
STATE OF MINNESOTA, County of RAMSEY

At the corner location shown on the sketch:

- On MAY 10, 1974 found a 8 in. square granite monument 0.2ft down. Placed P.K. straddle nails 2ft SW, NW, NE, & SE.
DATE
- left monument as found, lowered monument, removed monument (explain)
- On _____ placed a _____
DATE

SKETCH OF REFERENCE TIES



Statement of evidence relative to this corner location is on back of page.

I hereby certify that this document and the data contained herein was prepared by me or under my direct supervision.

Donald H. Campbell 1 Aug 74
SIGNATURE DATE

Registration No. 5712

- Land Surveyor, Professional Engineer
- County Surveyor, County Engineer

OFFICE OF THE REGISTER OF DEEDS

County of _____

I hereby certify that this document was filed in the Reg. of Deeds office at _____ .M. on the _____ day of _____ A.D., 19 _____

Register of Deeds _____

By _____, Deputy

DOCUMENT NO. _____