

CERTIFICATE OF LOCATION OF GOVERNMENT CORNER

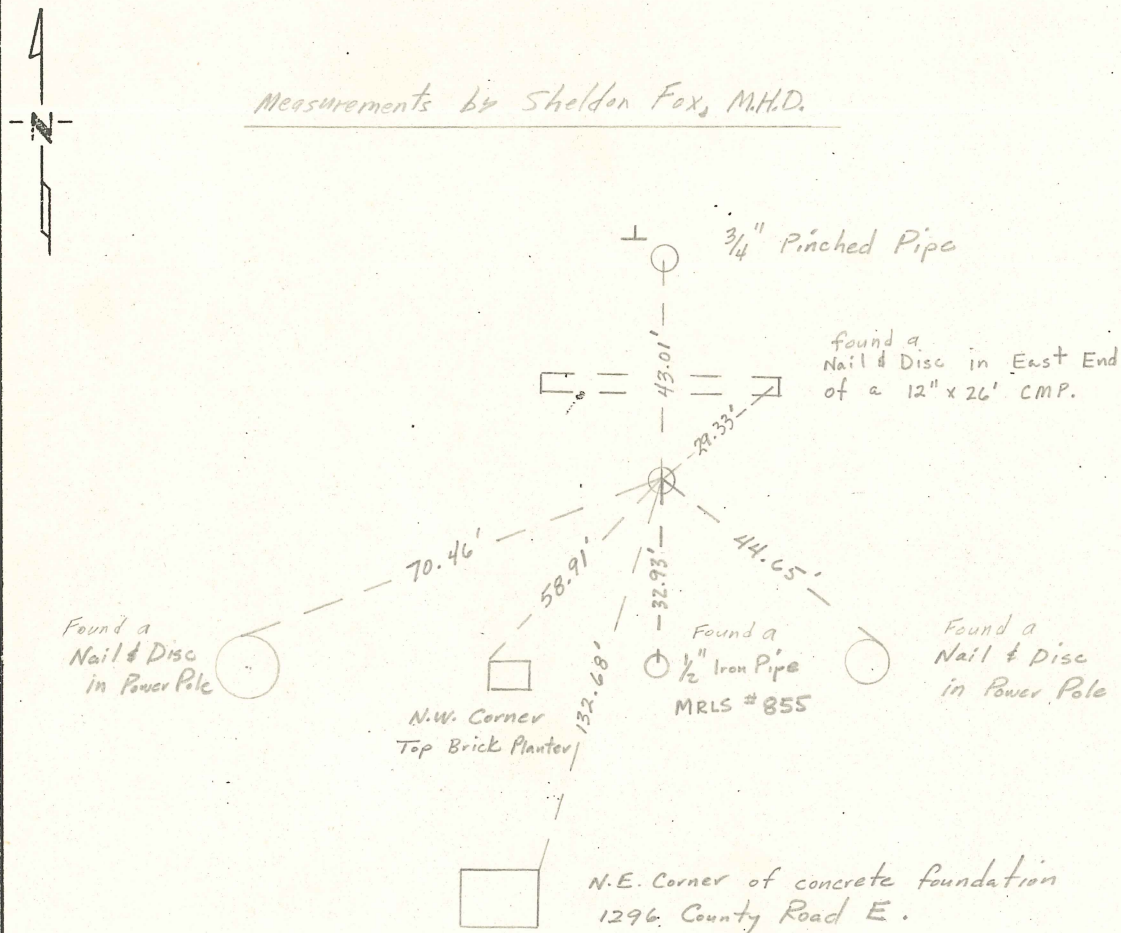
Northeast Corner of Section 33, Township 30 N, Range 22 W, 4th P.M.

STATE OF MINNESOTA, County of RAMSEY

At the corner location shown on the sketch:

- On 3/8/73 ^{Sheldon Fox} found a 2 in. iron pin down 1 1/2 in. flush with conc. slab.
DATE
- left monument as found, lowered monument, removed monument (explain)
- On _____ placed a _____
DATE

SKETCH OF REFERENCE TIES



Statement of evidence relative to this corner location is on back of page.

I hereby certify that this document and the data contained herein was prepared by me or under my direct supervision.

SIGNATURE DATE

Registration No. _____

- Land Surveyor, Professional Engineer
- County Surveyor, County Engineer

OFFICE OF THE REGISTER OF DEEDS

County of _____

I hereby certify that this document was filed in the Reg. of Deeds office at _____ .M. on the _____ day of _____ A.D., 19 _____

Register of Deeds _____

By _____, Deputy

DOCUMENT NO. _____

Statement of Evidence:

Information based on ties recieved from Frank Kvidera of Ramsey County Surveyors office and information from Carley and Associates' office. Carley's notes indicate a cast iron mon.