

# CERTIFICATE OF LOCATION OF GOVERNMENT CORNER

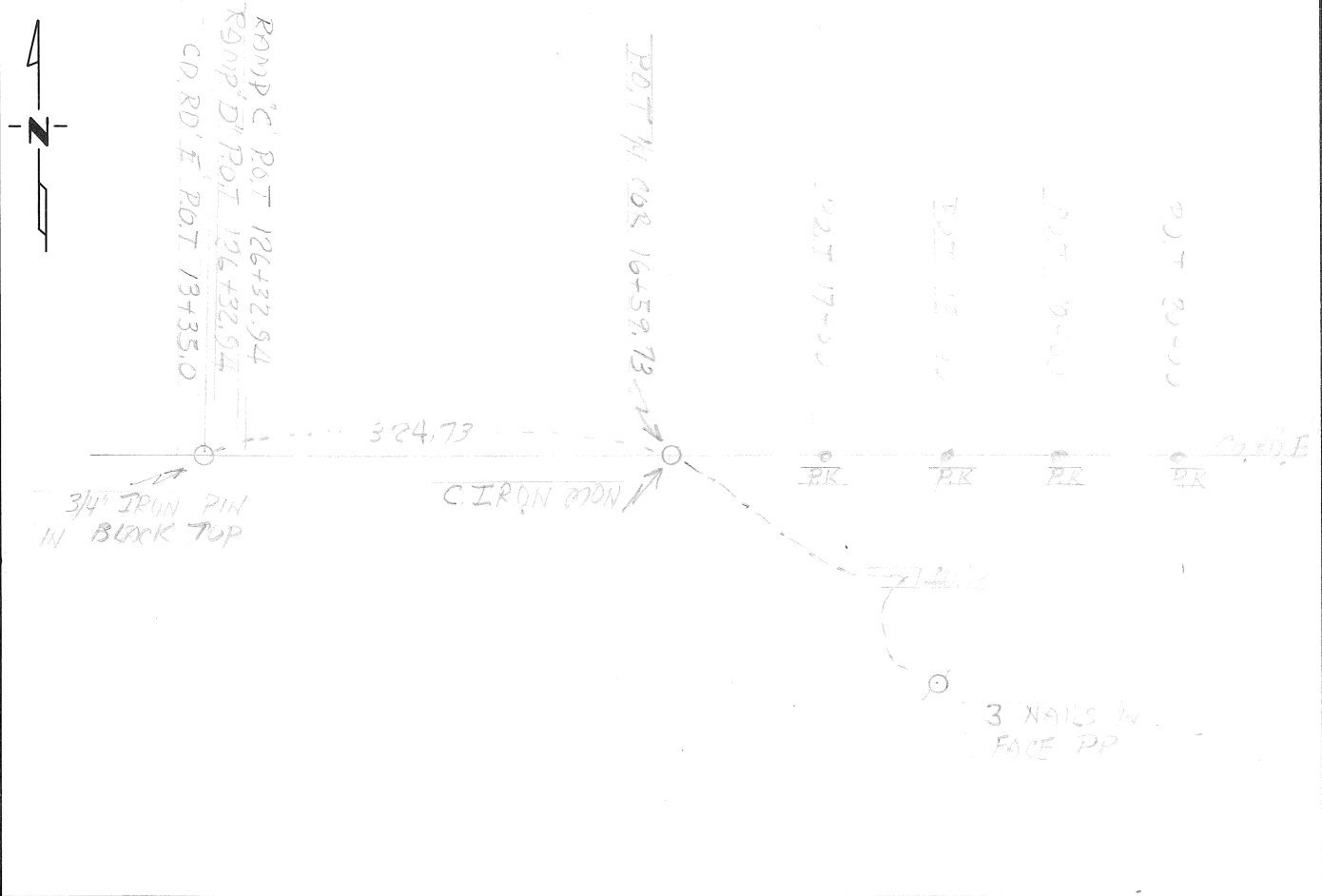
NORTH 1/4 Corner of Section 33, Township 30, Range 22, \_\_\_\_\_ P.M.

STATE OF MINNESOTA, County of RAMSEY

At the corner location shown on the sketch:

- On AUG 1969 found a LAS BOLT  
DATE
- left monument as found,  lowered monument,  removed monument (explain)
- On AUG 1969 placed a RAMSEY CO CAST IRON MONUMENT  
DATE

### SKETCH OF REFERENCE TIES



Statement of evidence relative to this corner location is on back of page.

I hereby certify that this document and the data contained herein was prepared by me or under my direct supervision.

\_\_\_\_\_  
SIGNATURE                      DATE

Registration No. \_\_\_\_\_

- Land Surveyor,  Professional Engineer
- County Surveyor,  County Engineer

OFFICE OF THE REGISTER OF DEEDS

County of \_\_\_\_\_

I hereby certify that this document was filed in the Reg. of Deeds office at \_\_\_\_\_ .M. on the \_\_\_\_\_ day of \_\_\_\_\_ A.D., 19 \_\_\_\_\_

Register of Deeds \_\_\_\_\_

By \_\_\_\_\_, Deputy

DOCUMENT NO. \_\_\_\_\_

Statement of Evidence:

AUG 1969

SEE NOTES BOOK B1 S.P. 6280-56 S.P. 6281-04 - S.P. 6285-61

CONTRACT NO. 13671 (T.H. 35-E-350) DOSE PEARSON FOUND @

LAC. BOOT & CHECKED WITH RAMSEY COUNTY SURVEY

S. 2. THEY HAD USED THIS AS THE CORNER. HE THEN

SET A RAMSEY COUNTY CAST IRON MONUMENT ON SAID CORNER.