

# CERTIFICATE OF LOCATION OF GOVERNMENT CORNER

Meander Cor. No. 5 on the ~~corner~~ west line of ~~Section~~ Section 19, Township 30, Range 21, 4th P.M.  
STATE OF MINNESOTA, County of Washington

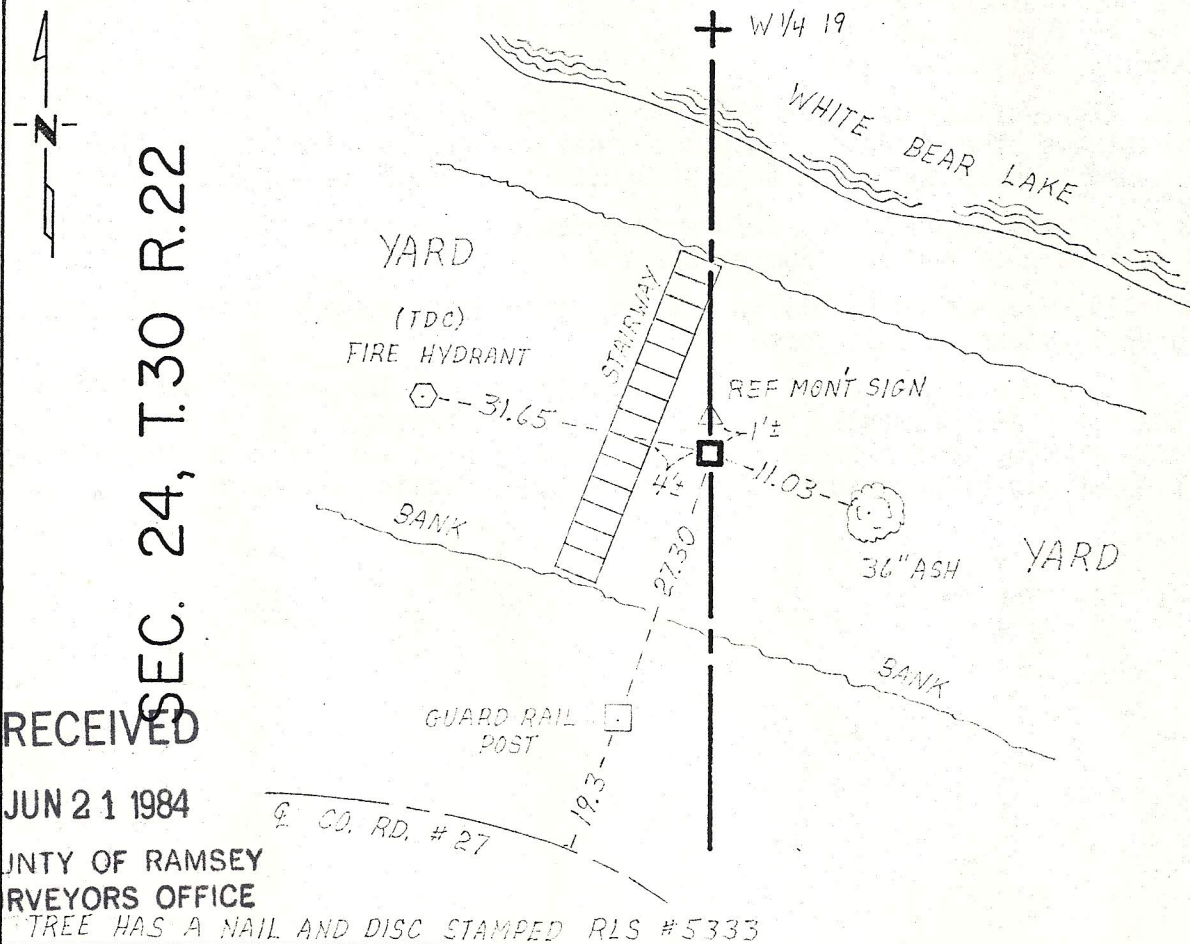
At the corner location shown on the sketch:

On Jan. 26, 1973 found a stone down 0.3 feet.  
DATE

left monument as found,  lowered monument,  removed monument (explain)

On \_\_\_\_\_ placed a \_\_\_\_\_  
DATE

## SKETCH OF REFERENCE TIES



RECEIVED  
JUN 21 1984  
COUNTY OF RAMSEY  
SURVEYORS OFFICE

SEC. 24, T.30 R.22

SEC. 19, T.30 R.21

Statement of evidence relative to this corner location is on back of page.

I hereby certify that this document and the data contained herein was prepared by me or under my direct supervision.

Lawrence A. Nybeck 6-12-84  
SIGNATURE DATE

Registration No. 12279

Land Surveyor,  Professional Engineer

County Surveyor,  County Engineer

OFFICE OF THE REGISTER OF DEEDS

County of \_\_\_\_\_

I hereby certify that this document was filed in the Reg. of Deeds office at \_\_\_\_\_ .M. on the \_\_\_\_\_ day of \_\_\_\_\_ A.D., 19 \_\_\_\_\_

Register of Deeds \_\_\_\_\_

By \_\_\_\_\_, Deputy

DOCUMENT NO. \_\_\_\_\_

Statement of Evidence: Meander Corner on west line of Section 19, T30 R21.

- 1847 October 19, James M. Marsh, Deputy Surveyor for original U.S. Public Land Survey set meander post at a point 5.62 chains (370.92 feet) north of the southwest corner of Section 19. Recorded two bearing trees:  
Br. Oak 12" S 35° W 110 links  
Br. Oak 8" S 75° E 52 links
- 1897 September 27, Ramsey County Surveyor's Office records for Section 24, T30 R22 show setting a monument at the meander corner.
- 1901 May 28, plat of Birchwood, surveyed by Fowble & Fitz, was filed for record. Plat map shows a granite monument in place on the section line at a point 370.92 feet north of the southwest corner of Section 19.
- 1916 October, A. Hammer, page 24 in fieldbook notes for survey made to establish the right-of-way of the Mahtomedi Line of the Minneapolis & St. Paul Suburban Railway shows granite monument in place and ties to three trees:  
Hickory SWly 18.67 feet  
Double Oak NEly 47.30 feet  
3 Hickories SEly 10.8 feet
- 1918 January, Right-of-Way and Track Map for Minneapolis & St. Paul Suburban Railroad shows stone monument in place. Railway crosses the section line between Sections 19 and 24 at a point 360.15 feet south of the meander corner.
- 1973 January 26, Washington County survey crew found stone down 0.3 foot as indicated by ties received from Ramsey County.
- 1976 November 19, Washington County survey crew traversed through the 8 inch by 8 inch granite stone at this corner.
- 1984 May, Following a complete analysis and comparison of the record information with the field measurements, the position of the granite stone is accepted as correctly marking this meander corner as used in past surveys and provides a continuous chain of perpetuation of the original Public Land Survey.

RECEIVED

JUN 2 1984

DEPT. OF LAND & WATER SURVEYS  
ST. PAUL, MINN.