

CERTIFICATE OF LOCATION OF GOVERNMENT CORNER

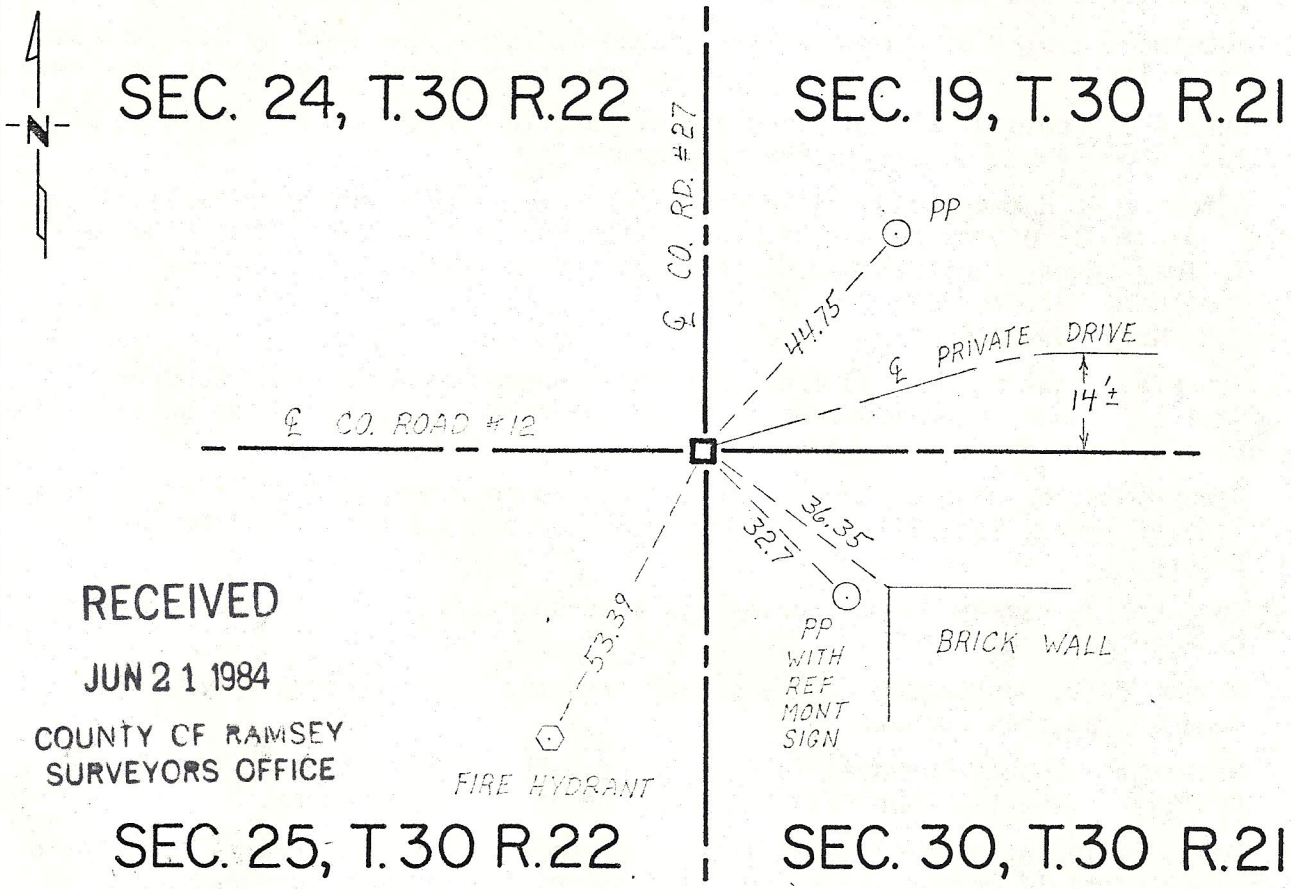
Northwest Corner of Section 30, Township 30, Range 21, 4th P.M.

STATE OF MINNESOTA, County of Washington

At the corner location shown on the sketch:

- On Jan. 25, 1973 found a stone down 0.4 feet in the centerline of County Road No. 27.
 left monument as found, lowered monument, removed monument (explain)
- On Nov. 19, 1976 found ~~xxxxx~~ a cast iron monument as placed over stone by Ramsey County Surveyor.

SKETCH OF REFERENCE TIES



RECEIVED
 JUN 21 1984
 COUNTY OF RAMSEY
 SURVEYORS OFFICE

SEC. 25, T.30 R.22 SEC. 30, T.30 R.21

TIES ARE NAIL AND DISC STAMPED RLS # 5333, EXCEPT WHERE NOTED OTHERWISE

Statement of evidence relative to this corner location is on back of page.

I hereby certify that this document and the data contained herein was prepared by me or under my direct supervision.

Laurance A. Nybeck 6-12-84
SIGNATURE DATE

Registration No. 12279
 Land Surveyor, Professional Engineer
 County Surveyor, County Engineer

OFFICE OF THE REGISTER OF DEEDS
County of _____

I hereby certify that this document was filed in the Reg. of Deeds office at _____ .M. on the _____ day of _____ A.D., 19 _____

Register of Deeds _____
 By _____, Deputy
 DOCUMENT NO. _____

Statement of Evidence: Section corner common to Sections 19 & 30, T30 R21 and Sections 24 & 25, T30 R 22.

- 1847 October 19, James M. Marsh, Deputy Surveyor for original U.S. Public Land Survey set post and recorded two bearing trees:
Br. Oak 10" S 4° W 120 links
Br. Oak 8" S 85° E 78 links
- 1897 September 27, Ramsey County survey records for Section 24, T30 R22 note, "The Southeast Corner of Section 24 was fixed, found stake, Government witness trees gone. Set monument."
- 1901 May 28, plat of Birchwood, surveyed by Fowble & Fitz, was filed for record. Plat map shows granite monument in place at this section corner.
- 1906 July 21, plat of Lakewood Park First Division, surveyed by John B. Irvine, was filed for record. Plat map shows a monument \square in place at the corner. Also notes the Minneapolis & St. Paul Suburban Railway crosses the section line at a point 10.1 feet north of the corner.
- 1906 December 5, plat of Lakewood Park Second Division, surveyed by D.J. McAdam, was filed for record. Plat map shows granite monument in place at this corner.
- 1907 June 4-6, Lewis W. Clarke, County Surveyor, in Survey No. 287, Book 1, page 169, shows Ramsey County stone in place.
- 1916 October, A. Hammer, page 24 in fieldbook notes for survey to establish the right-of-way of the Mahtomedi Line of the Minneapolis & St. Paul Suburban Railway shows Granite Monument and ties to two trees:
Oak NWly 21.67 feet
Oak NEly 53.67 feet
- 1918 January, Right-of-Way and Track Map for Minneapolis & St. Paul Suburban Railroad shows stone monument in place and railroad crossing the section line at a point 9.88 feet north of the corner.
- 1973 January 25, Washington County survey crew found stone down 0.4 foot in center-line of County Road 27 in place as indicated by ties received from Ramsey County.
- 1974 December 3, Ramsey County Surveyor placed short cast iron (5 inches) over granite monument.
- 1976 November 19, Washington County survey crew traversed through a cast iron monument at this corner.
- 1974-1979 Washington County Surveyor Paul A. Johnson-RLS 10938- stamped "VERIFIED CORNER" on the tie sheet for the position of the found stone.
- 1984 May, Following a complete analysis and comparison of the record information with the field measurements, the position of the granite monument under a cast iron monument as verified in the Township Tie Book, page 110 by Washington County Surveyor Paul A. Johnson-RLS 10938 (1974-1980)- provides a continuous chain of perpetuation of the original Public Land Survey corner and is accepted as being correct.