

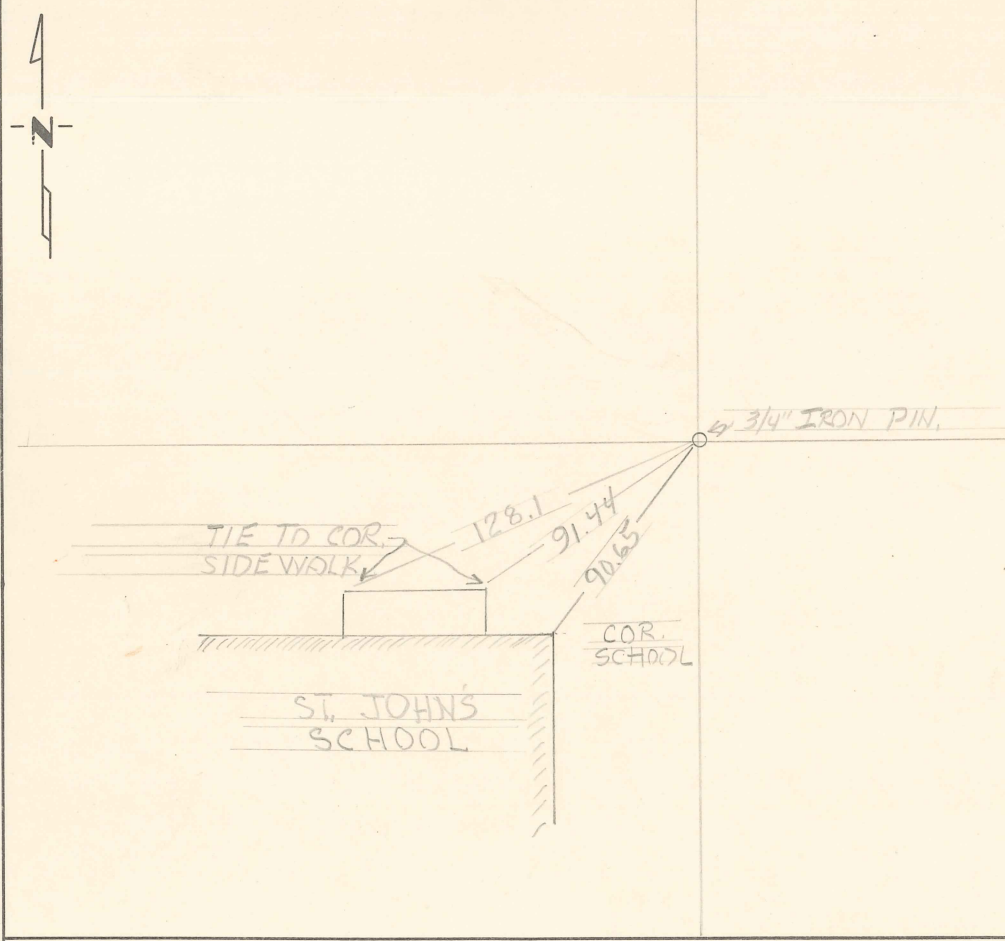
CERTIFICATE OF LOCATION OF GOVERNMENT CORNER

NORTH EAST Corner of Section 29, Township 30, Range 23, _____ P.M.
STATE OF MINNESOTA, County of RAMSEY

At the corner location shown on the sketch:

- On Nov 28 1964 found a IRON PIN 0.5 BELOW BIT. SET IN PIN SET
DATE SET 3/4" IRON PIN ABOVE FLUSH WITH BIT.
- left monument as found, lowered monument, removed monument (explain)
- On _____ placed a _____
DATE _____

SKETCH OF REFERENCE TIES



Statement of evidence relative to this corner location is on back of page.

I hereby certify that this document and the data contained herein was prepared by me or under my direct supervision.

SIGNATURE DATE

- Registration No. _____
- Land Surveyor, Professional Engineer
 - County Surveyor, County Engineer

OFFICE OF THE REGISTER OF DEEDS
County of _____

I hereby certify that this document was filed in the Reg. of Deeds office at _____ .M. on the _____ day of _____ A.D., 19 ____

Register of Deeds _____
By _____, Deputy
DOCUMENT NO. _____

Statement of Evidence:

APRIL 1ST 1963 S.P 6284-23 TH 35W JIM CHANDLER & CREW FOUND
A IRON PIN 0.5 BELOW BIT SURFACE, & AFTER CONSTRUCTION & A FILL
OVER THIS CORNER WE RESET A 3/4" IRON PIN FLUSH WITH NEW BIT
ON NOV 28 1964 & TOOK NEW TIES J.E.C.