

# CERTIFICATE OF LOCATION OF GOVERNMENT CORNER

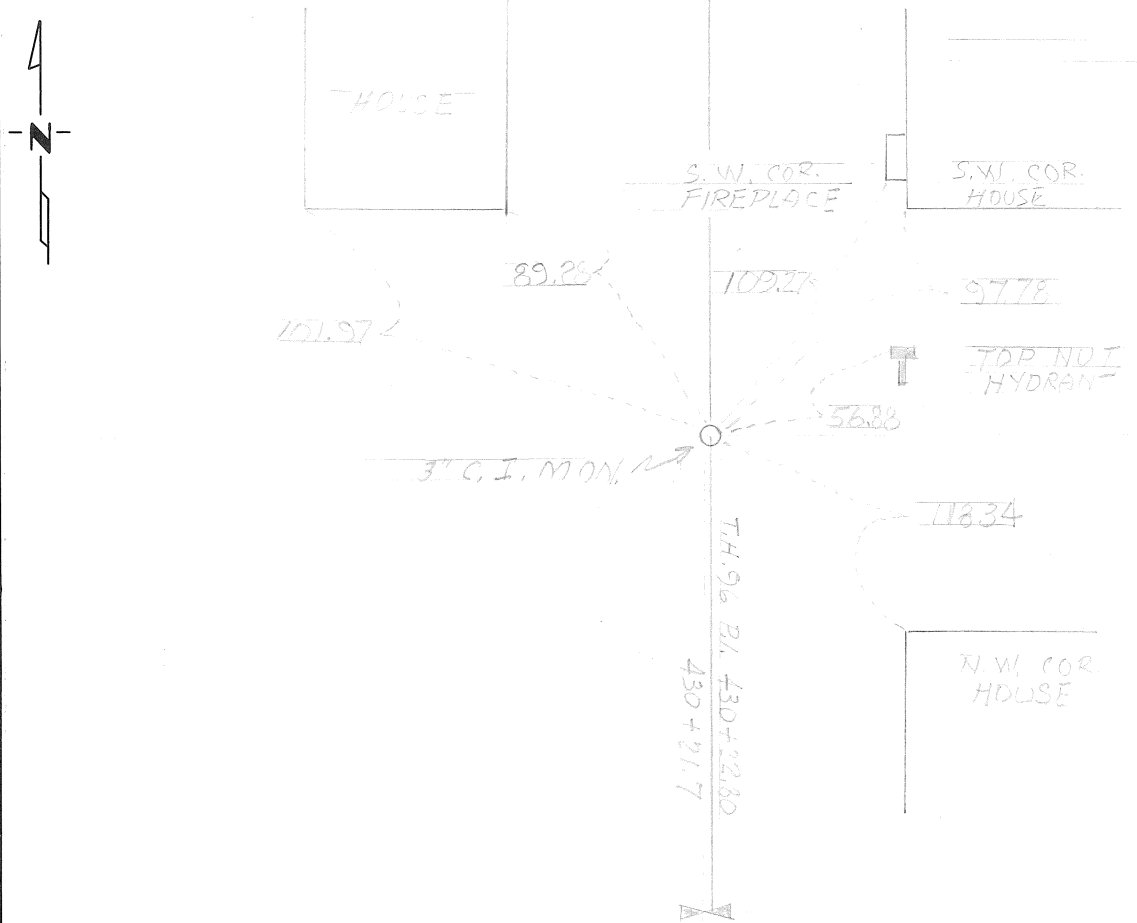
NORTH EAST Corner of Section 22, Township 30, Range 22, \_\_\_\_\_ P.M.

STATE OF MINNESOTA, County of RAMSEY

At the corner location shown on the sketch:

- On 4-25-68 found a 3" CAST IRON MONUMENT  
DATE
- left monument as found,  lowered monument,  removed monument (explain)
- On \_\_\_\_\_ placed a \_\_\_\_\_  
DATE

### SKETCH OF REFERENCE TIES



Statement of evidence relative to this corner location is on back of page.

I hereby certify that this document and the data contained herein was prepared by me or under my direct supervision.

\_\_\_\_\_  
SIGNATURE DATE

Registration No. \_\_\_\_\_

- Land Surveyor,  Professional Engineer
- County Surveyor,  County Engineer

OFFICE OF THE REGISTER OF DEEDS

County of \_\_\_\_\_

I hereby certify that this document was filed in the Reg. of Deeds office at \_\_\_\_\_ .M. on the \_\_\_\_\_ day of \_\_\_\_\_ A.D., 19 \_\_\_\_

Register of Deeds \_\_\_\_\_

By \_\_\_\_\_, Deputy

DOCUMENT NO. \_\_\_\_\_

Statement of Evidence:

4-6-68 T.H. 96 S.P. 6224-17 NOTES BY PAUL JUCKEL  
FOUND 3" C.I. MON. RESET BY COUNTY.